

# COMMUNITY BASELINE PROFILE 2015

## LOWER SUPER OUTPUT AREA (LSOA) BASED

### E01020211

**Description** Newton Abbot: Sandringham Road area

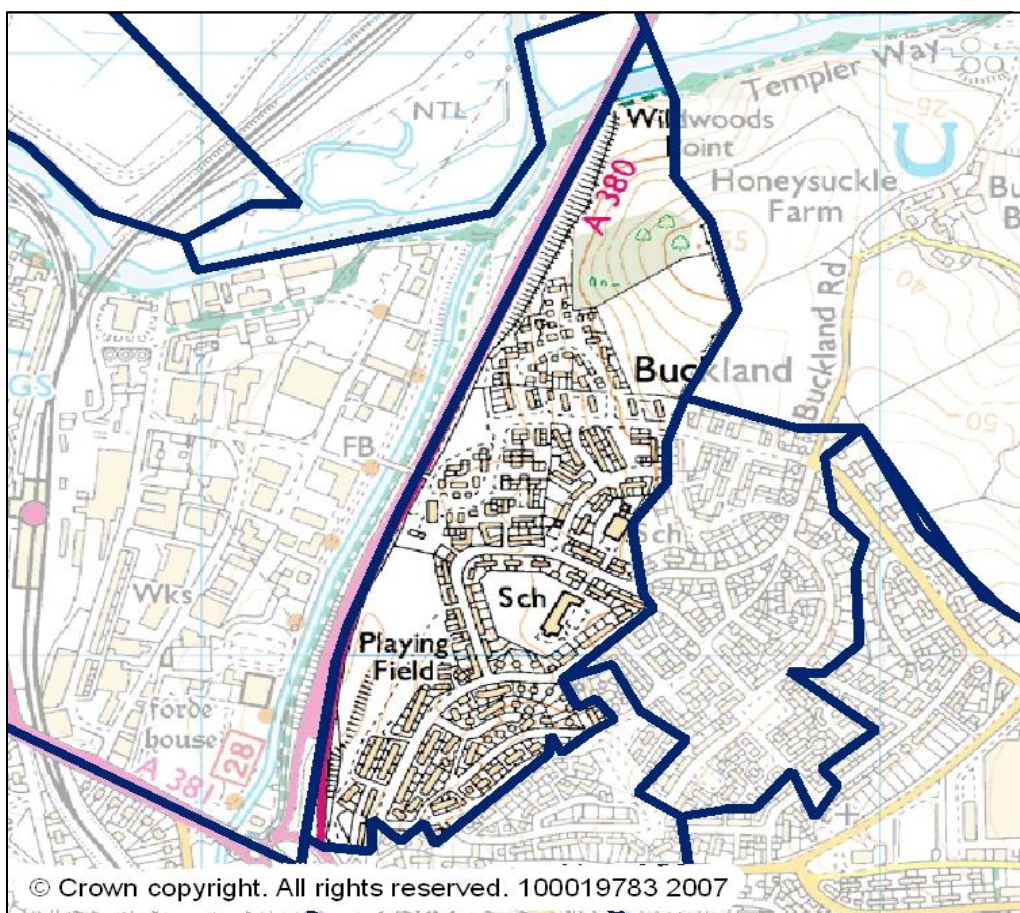
**Deprivation Group** Q1 - Most Deprived

**District** Teignbridge

**County** Devon

**CCG** South Devon & Torbay CCG

**CCG Locality** Newton Abbot Locality



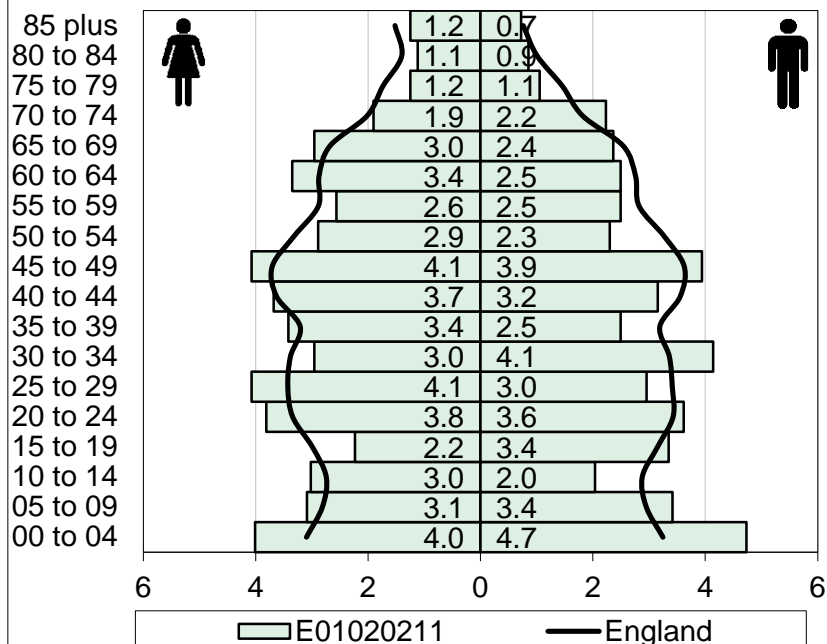
#### Contents

Cover	Page 1
Population	Page 2
Index of Multiple Deprivation	Page 3
Indices of Deprivation Domains	Page 4
Income Deprivation	Page 5
Employment Deprivation	Page 6
JSA Claimant Rate	Page 7
Emergency Admissions	Page 8

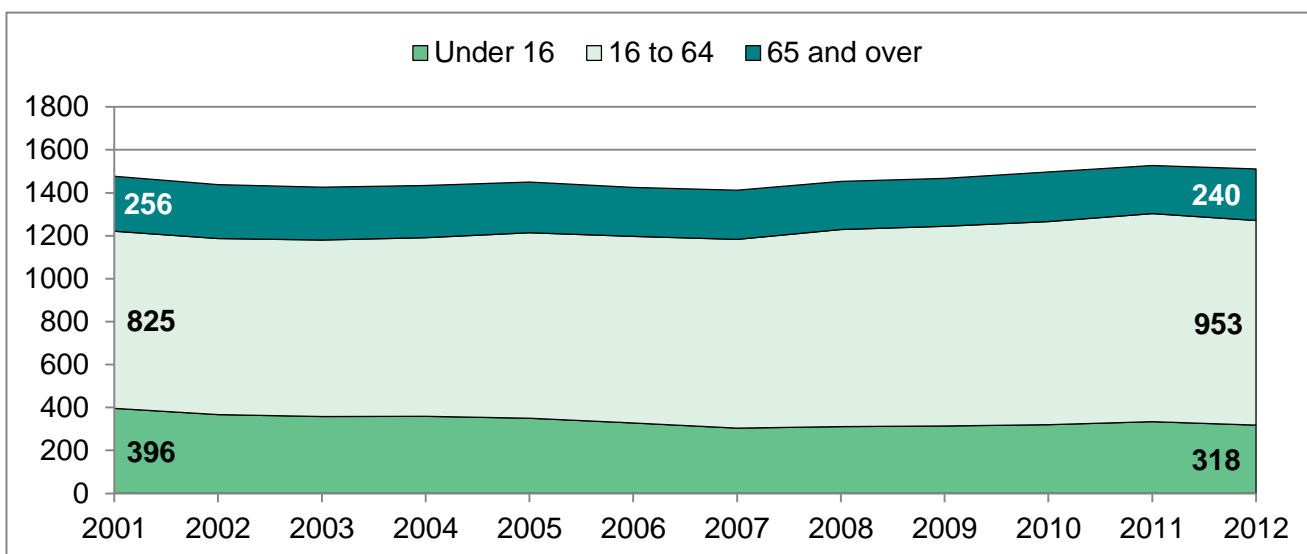
Elective Admissions	Page 9
A&E Attendances	Page 10
Accidental Falls Admissions	Page 11
Alcohol-Related Admissions	Page 12
Life Expectancy at Birth	Page 13
Life Expectancy at Age 65	Page 14
Birth Rate	Page 15
Sources	Page 16

# POPULATION

## POPULATION PYRAMID AREA vs NATIONAL PROFILE



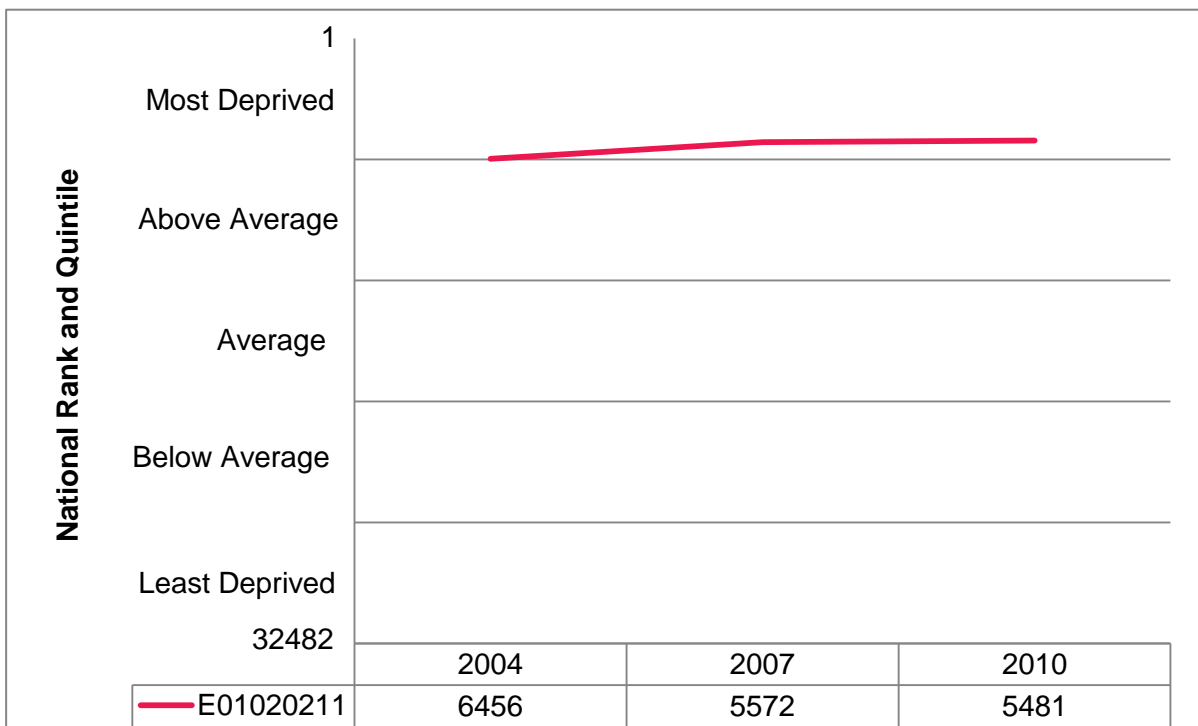
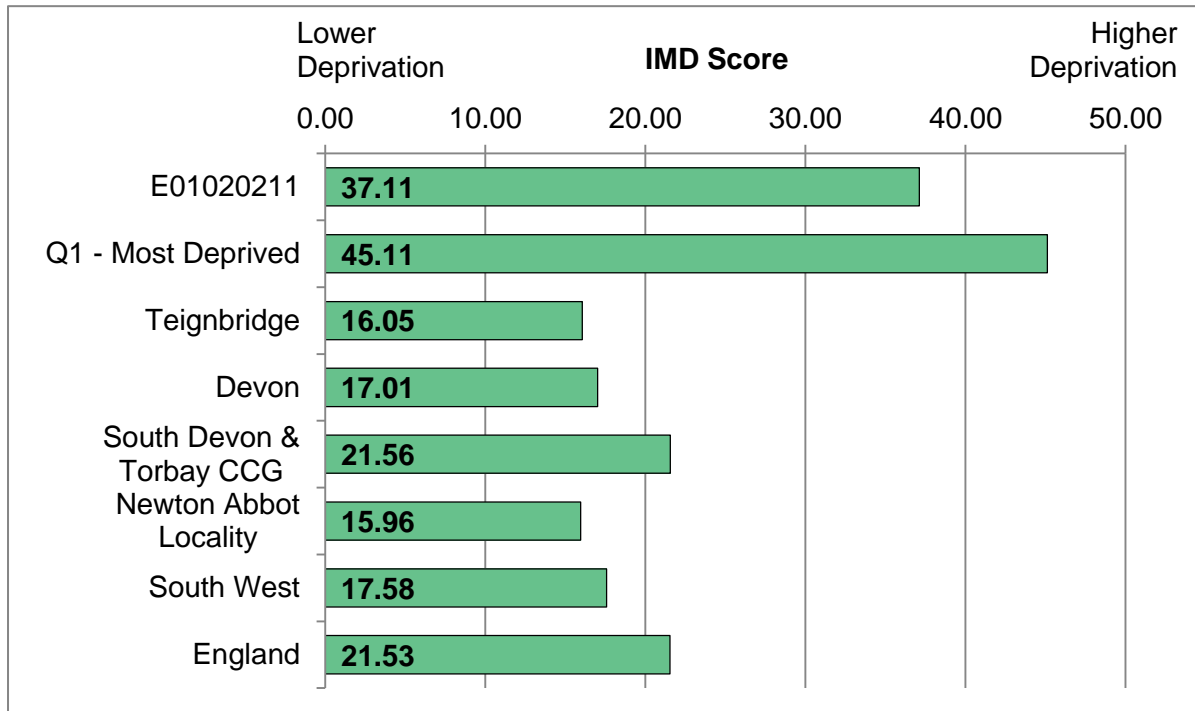
Age	Female	Male
0-4	61	72
5-9	47	52
10-14	46	31
15-19	34	51
20-24	58	55
25-29	62	45
30-34	45	63
35-39	52	38
40-44	56	48
45-49	62	60
50-54	44	35
55-59	39	38
60-64	51	38
65-69	45	36
70-74	29	34
75-79	19	16
80-84	17	13
85+	19	11
<b>Total</b>	<b>786</b>	<b>736</b>



Area	00-15	16-64	65-84	85+	Total
LSOA number	327	956	209	30	1522
LSOA rate	21.5%	62.8%	13.7%	2.0%	100.0%
Q1 - Most Deprived	19.5%	65.2%	13.1%	2.2%	100.0%
Teignbridge	16.3%	58.8%	21.2%	3.8%	100.0%
Devon	16.3%	59.7%	20.4%	3.5%	100.0%
South Devon & Torbay	16.3%	58.5%	21.4%	3.8%	100.0%
Newton Abbot Locality	17.0%	60.8%	18.7%	3.5%	100.0%
South West	17.0%	60.8%	18.7%	3.5%	100.0%
England	17.5%	61.7%	17.8%	3.0%	100.0%

# INDEX OF MULTIPLE DEPRIVATION

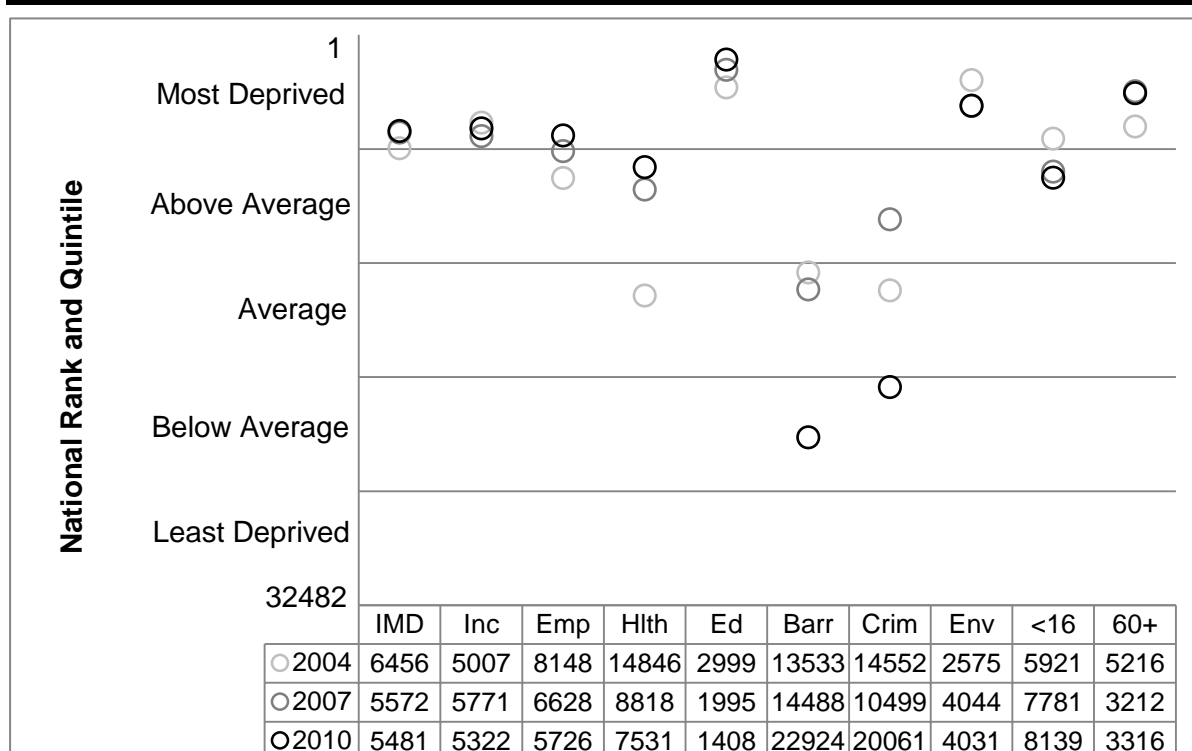
The English Indices of Deprivation measures relative levels of deprivation in small areas of England called Lower Super Output Areas (LSOAs). The overall measure is called the Index of Multiple Deprivation. This produces an IMD score (bar chart below showing score in 2010) and a national rank out of 32482 LSOAs (trend in national rank shown in line chart below). Deprivation and health are closely connected, with areas with higher levels of deprivation tending to experience poorer health outcomes. Reducing social inequalities in health is a major focus of the work of Public Health teams.



# INDICES OF DEPRIVATION DOMAINS

The Indices of Deprivation are comprised of an overall Index of Multiple Deprivation (IMD); seven domains which contribute to the overall index covering income, employment, health, education, barriers to housing and services, crime and living environment; and two supplementary indices relating to income deprivation in children (under 16) and older people (60+).

The following chart compares an area's national rank on the IMD, seven domain and two supplementary indices in 2004, 2007 and 2010, illustrated below by circles of increasing darkness. The value axis ranges from the most deprived LSOA in the country (1) to the least deprived LSOA in the country (32482) on a given measure, and the chart is further divided into five sections highlighting the national deprivation group (quintile). This gives an indicator of the area's relative position nationally and how this has changed over time.

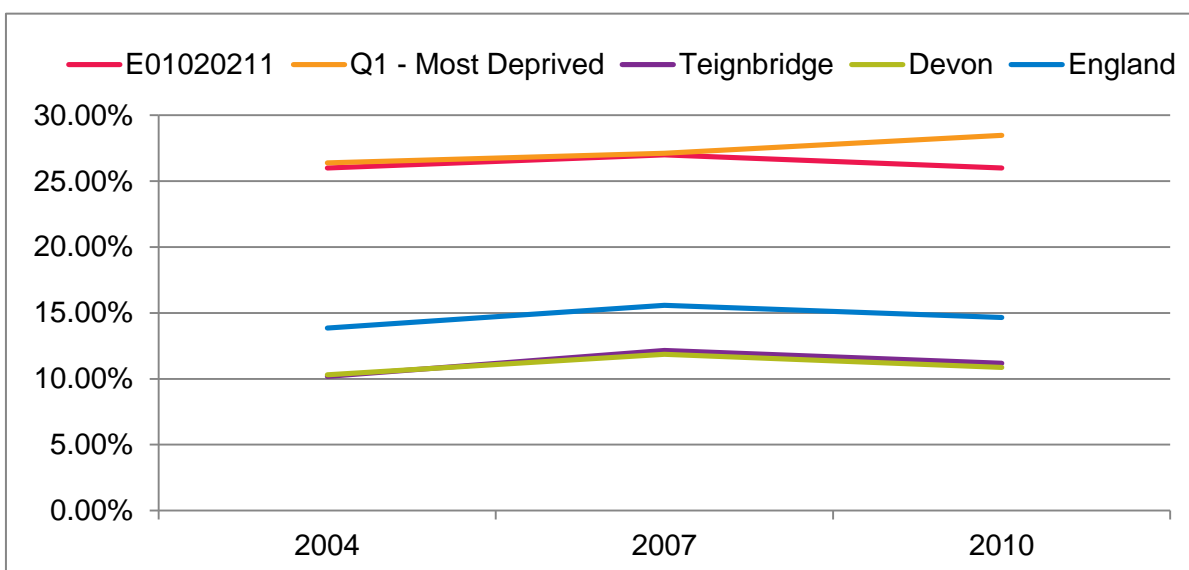
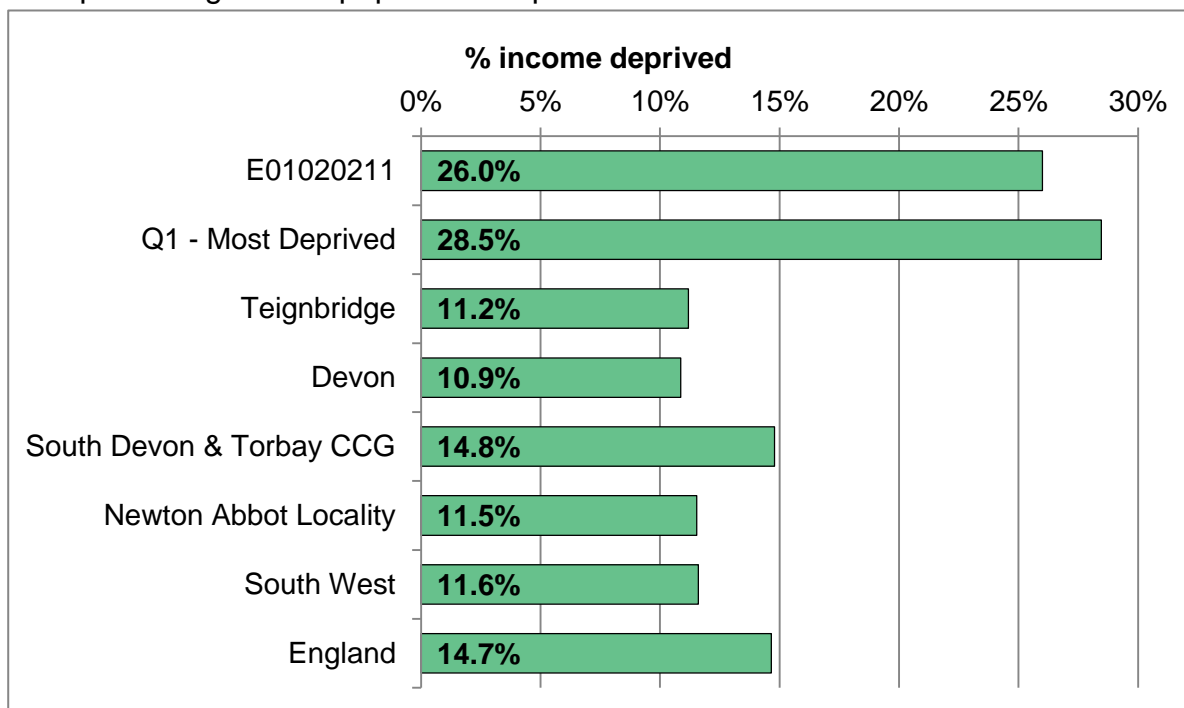


## Indices of Deprivation Domain Descriptions

Key	Domain
IMD	Index of Multiple Deprivation.
Inc	Income Domain. Persons dependent on state benefits and tax credits.
Emp	Employment Domain. Persons involuntarily excluded from the labour market.
Hlth	Health Domain. Covers mental health, admissions, illness & premature death.
Ed	Education Domain. Measures education attainment and participation.
Barr	Barriers to Housing and Services Domain. Covers affordability and distance.
Crim	Crime Domain. Levels of violence, burglary, theft and criminal damage.
Env	Living Environment Domain. Quality of indoor and outdoor environment.
<16	Income Deprivation Affecting Children Index (IDACI). See income.
60+	Income Deprivation Affecting Older People Index (IDAOP). See income.

# INCOME DEPRIVATION

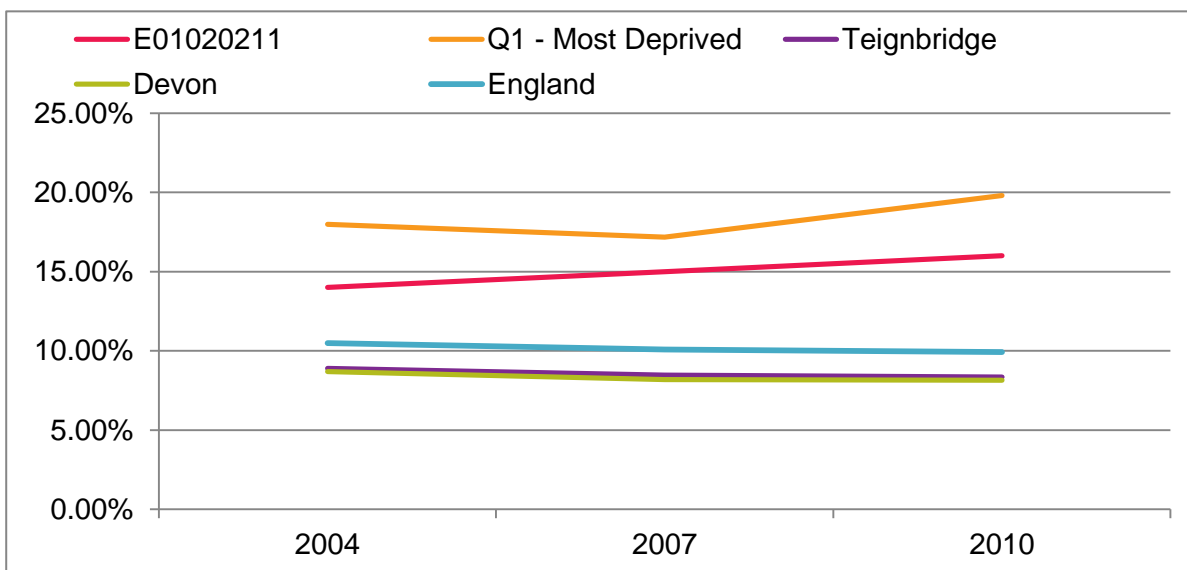
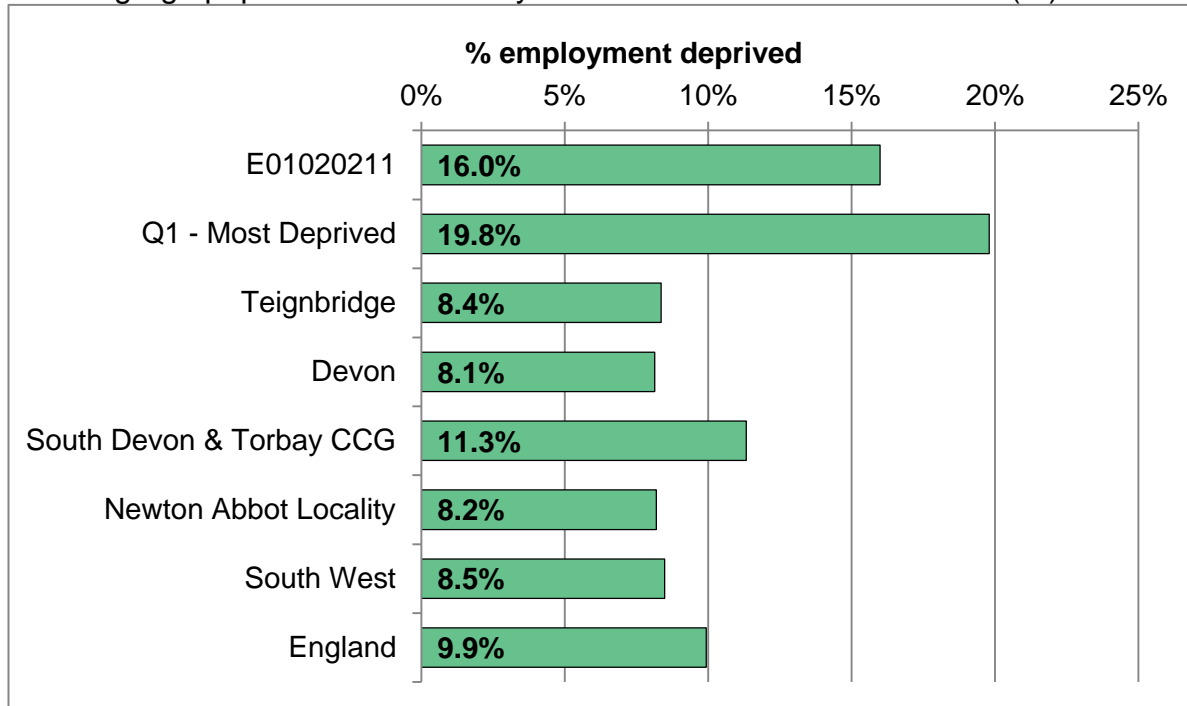
The percentage of the population dependent on benefits or tax credits.



Area	2004	2007	2010
Total per annum	-	-	-
LSOA rate	26.0%	27.0%	26.0%
Q1 - Most Deprived	26.4%	27.1%	28.5%
Teignbridge	10.2%	12.2%	11.2%
Devon	10.3%	11.8%	10.9%
South Devon & Torbay	13.4%	15.6%	14.8%
Newton Abbot Locality	10.3%	12.3%	11.5%
South West	10.6%	10.6%	10.6%
England	13.9%	13.9%	13.9%

# EMPLOYMENT DEPRIVATION

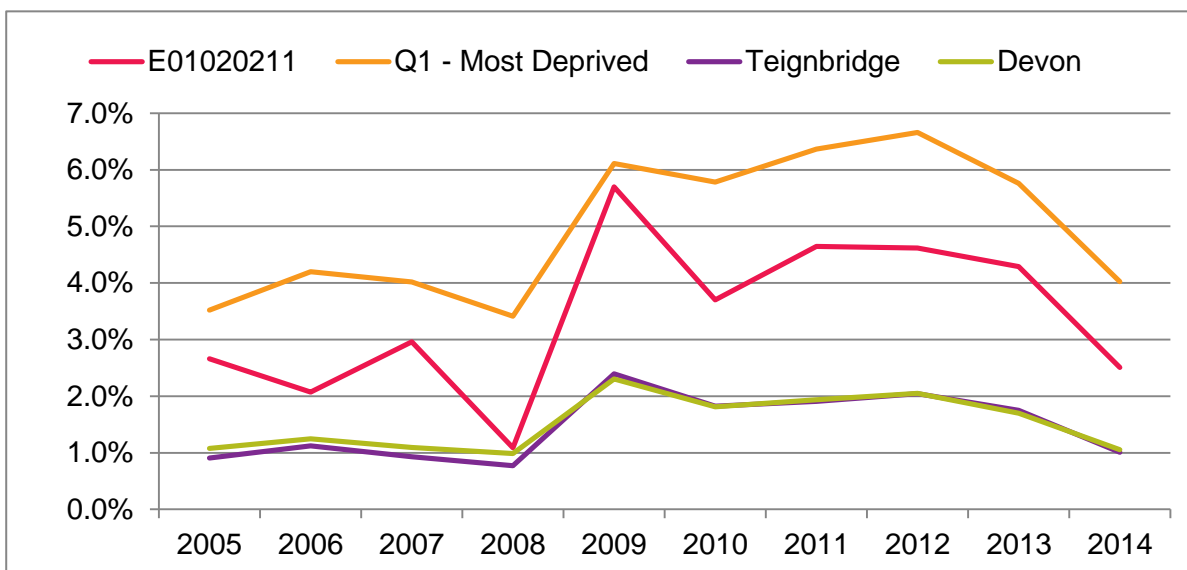
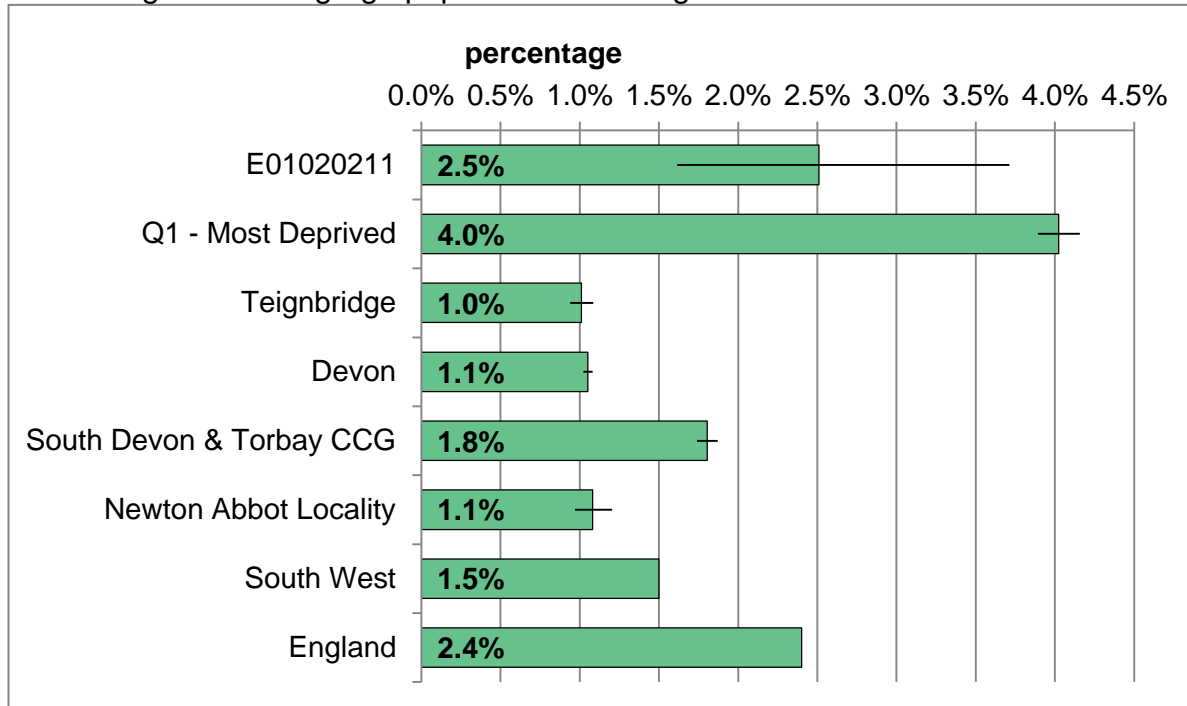
Working-age population involuntarily excluded from the labour market (%).



Area	2004	2007	2010
Total per annum	-	-	-
LSOA rate	14.0%	15.0%	16.0%
Q1 - Most Deprived	18.0%	17.2%	19.8%
Teignbridge	8.9%	8.5%	8.4%
Devon	8.7%	8.2%	8.1%
South Devon & Torbay	11.1%	11.1%	11.3%
Newton Abbot Locality	8.1%	8.1%	8.2%
South West	8.5%	8.5%	8.5%
England	10.5%	10.1%	9.9%

# JOBSEEKERS ALLOWANCE CLAIMANT RATE

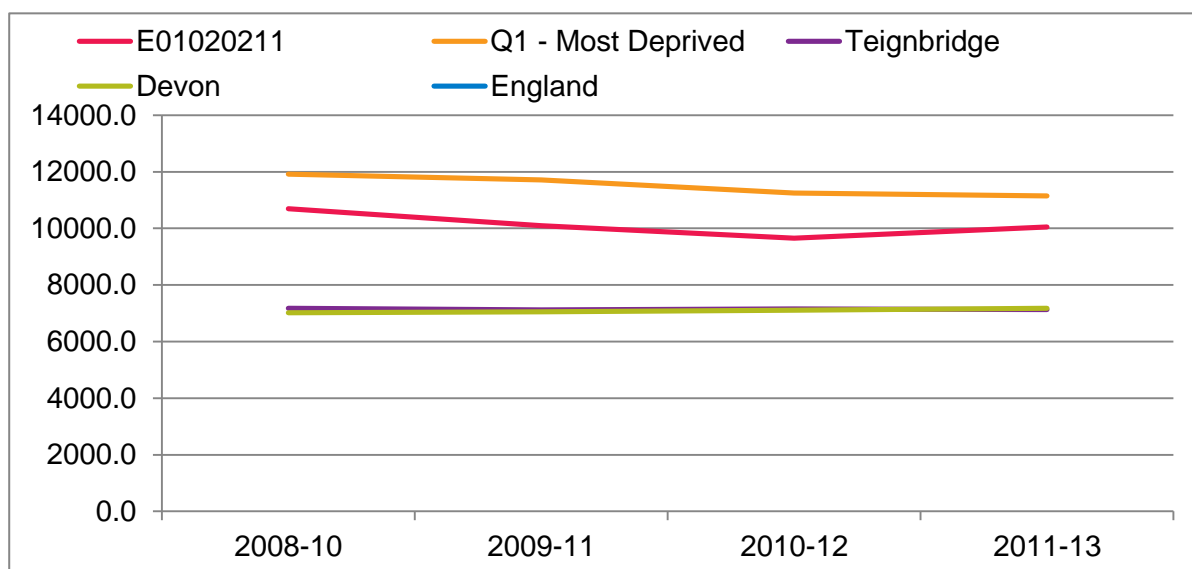
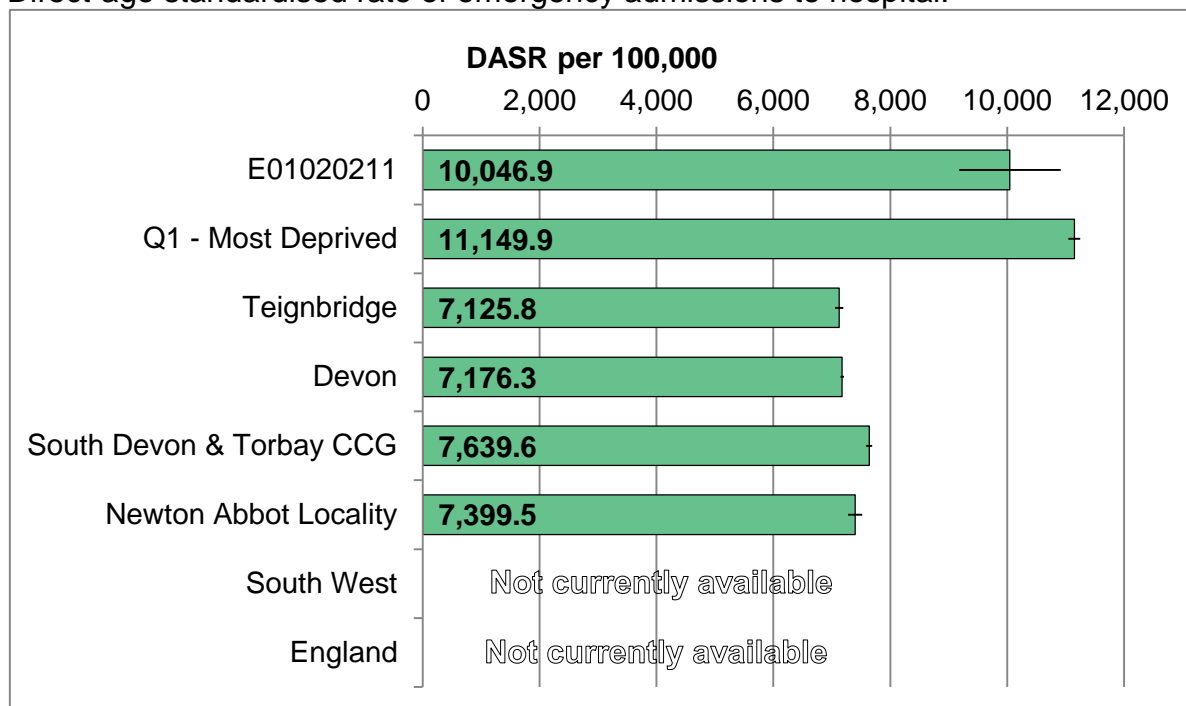
Percentage of working-age population receiving Jobseekers Allowance.



Area	2009	2010	2011	2012	2013	2014
Total claimants	53	35	45	44	41	24
LSOA rate	5.7%	3.7%	4.6%	4.6%	4.3%	2.5%
Q1 - Most Deprived	6.1%	5.8%	6.4%	6.7%	5.8%	4.0%
Teignbridge	2.4%	1.8%	1.9%	2.0%	1.7%	1.0%
Devon	2.3%	1.8%	1.9%	2.0%	1.7%	1.1%
South Devon & Torbay	3.3%	2.7%	3.0%	3.2%	2.8%	1.8%
Newton Abbot Locality	2.7%	1.9%	2.1%	2.2%	2.0%	1.1%
South West	2.9%	2.4%	2.4%	2.6%	2.3%	1.5%
England	3.9%	3.5%	3.6%	3.7%	3.4%	2.4%

# EMERGENCY ADMISSIONS

Direct-age standardised rate of emergency admissions to hospital.

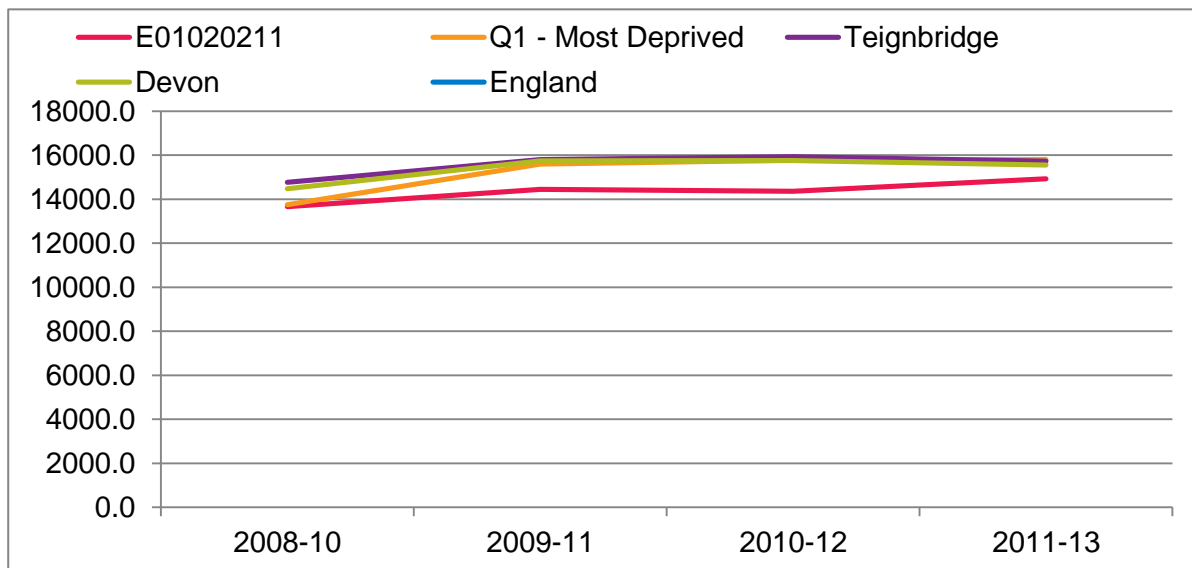
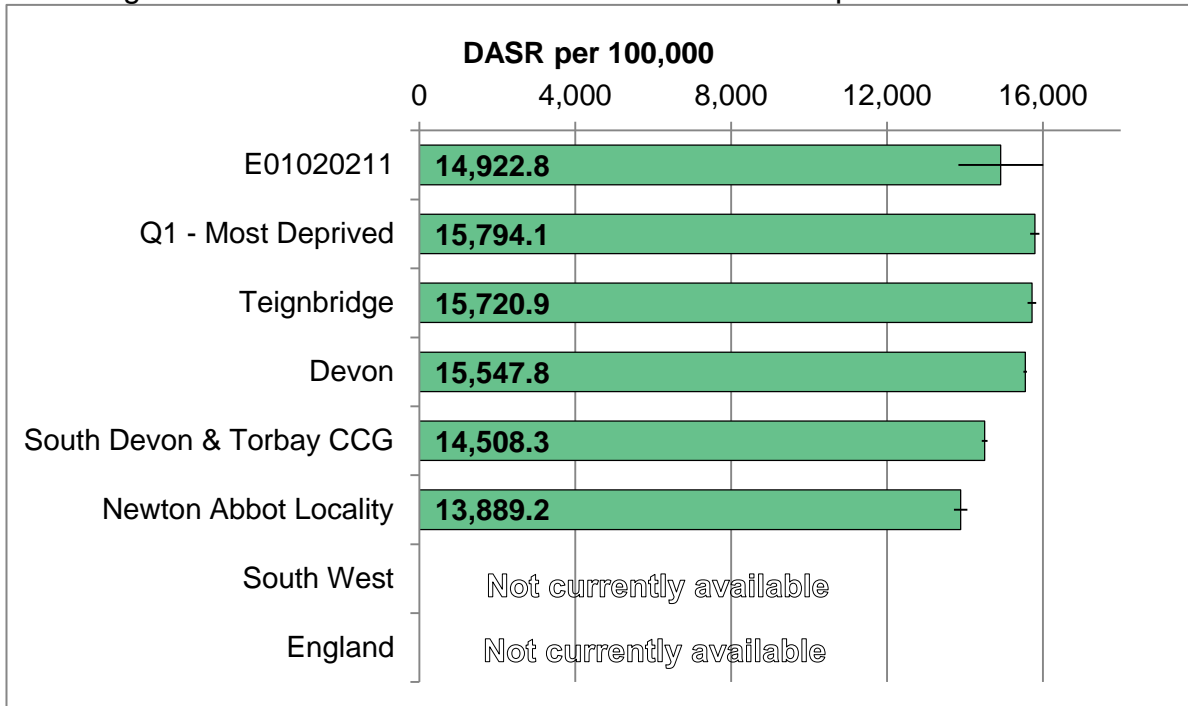


Area	2008-10	2009-11	2010-12	2011-13
Average per annum	179	174	165	171
LSOA rate	10696.8	10094.5	9653.8	10046.9
Q1 - Most Deprived	11910.4	11715.0	11252.2	11149.9
Teignbridge	7180.9	7123.8	7148.7	7125.8
Devon	7014.6	7049.0	7111.0	7176.3
South Devon & Torbay	7727.2	7653.9	7641.1	7639.6
Newton Abbot Locality	7537.0	7498.0	7478.3	7399.5
South West	N/A	N/A	N/A	N/A
England	N/A	N/A	N/A	N/A



# ELECTIVE ADMISSIONS

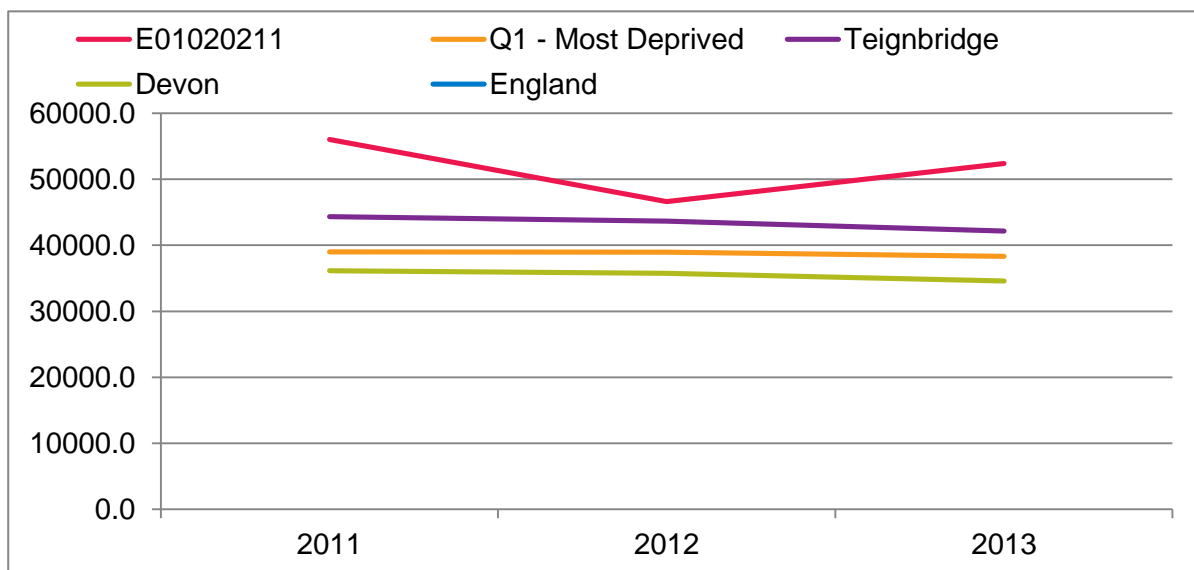
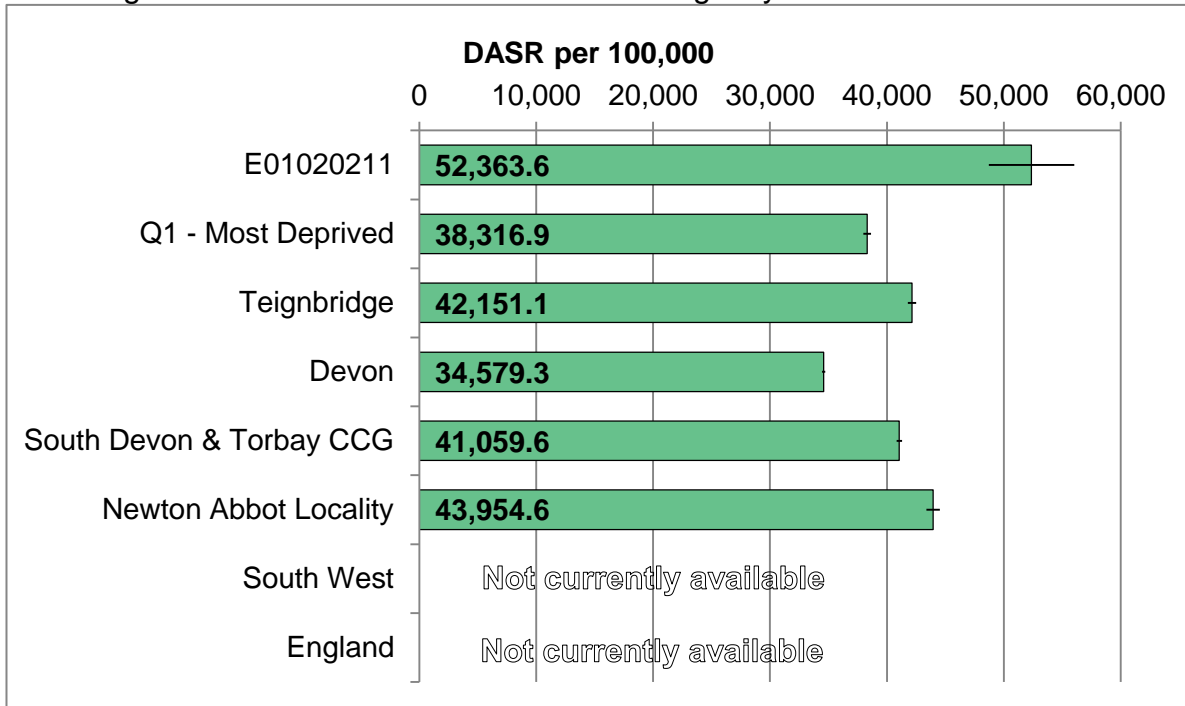
Direct-age standardised rate of elective admissions to hospital.



Area	2008-10	2009-11	2010-12	2011-13
Average per annum	210	227	230	240
LSOA rate	13659.6	14444.0	14362.6	14922.8
Q1 - Most Deprived	13745.3	15592.9	15764.3	15794.1
Teignbridge	14773.2	15805.2	15935.8	15720.9
Devon	14483.7	15735.4	15757.9	15547.8
South Devon & Torbay	13203.9	14340.5	14453.4	14508.3
Newton Abbot Locality	13138.6	14009.4	14035.7	13889.2
South West	N/A	N/A	N/A	N/A
England	N/A	N/A	N/A	N/A

# A&E ATTENDANCES

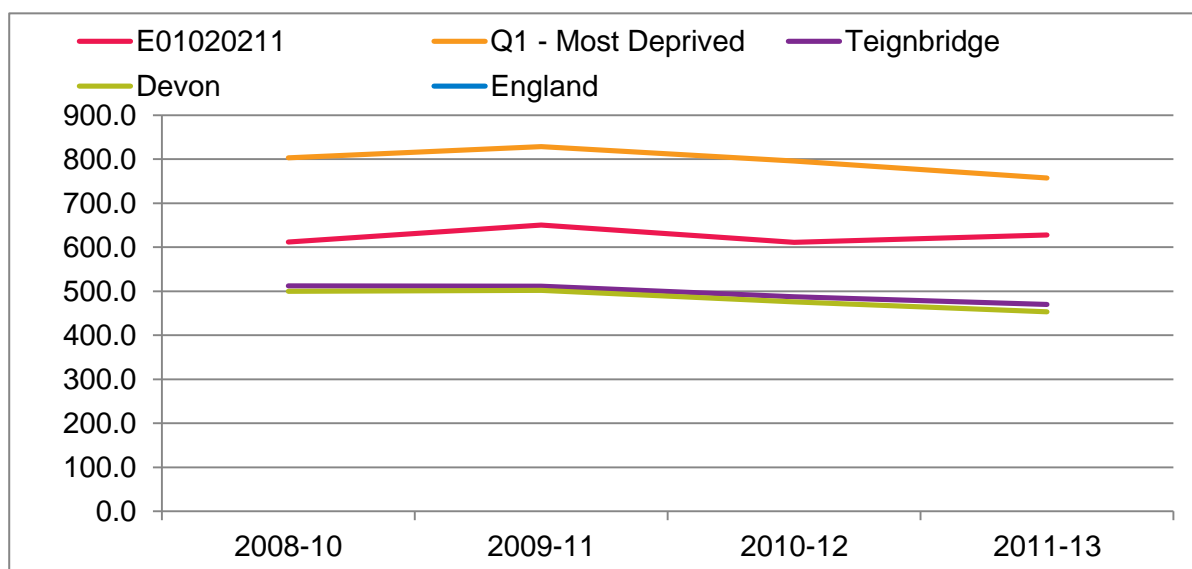
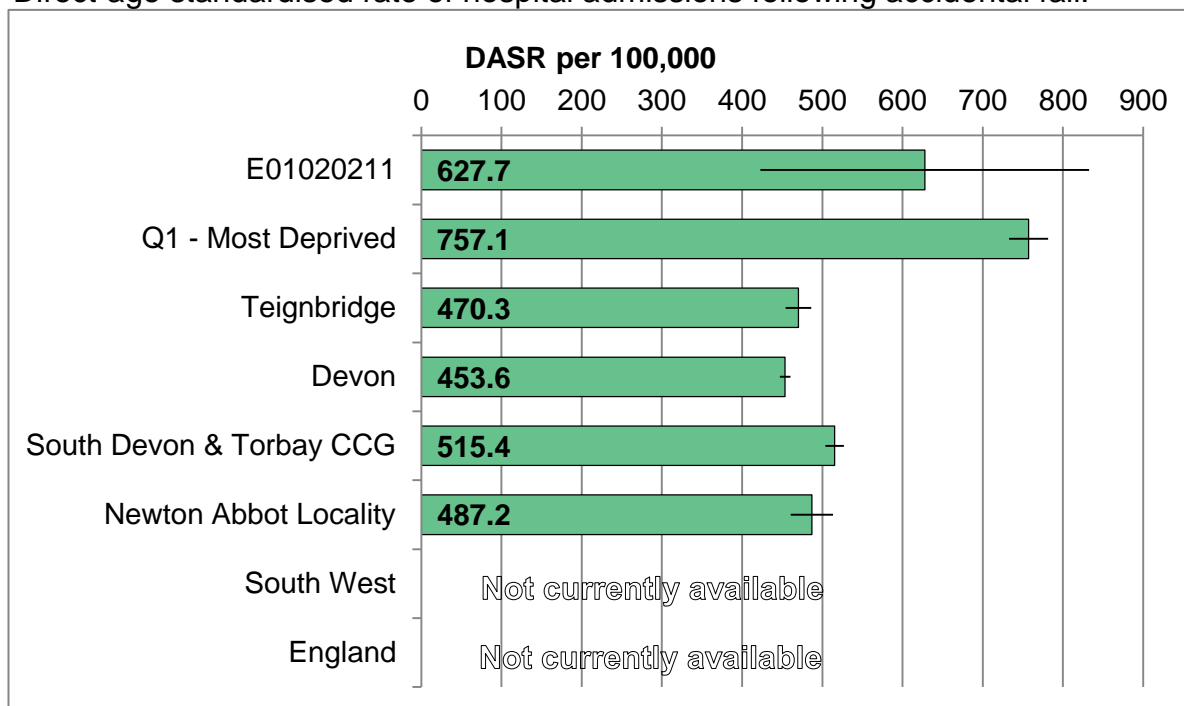
Direct-age standardised rate of accident & emergency / MIU attendances.



Area	2011	2012	2013
Average per annum	857	709	789
LSOA rate	56005.6	46593.4	52363.6
Q1 - Most Deprived	39000.9	38944.7	38316.9
Teignbridge	44350.3	43639.7	42151.1
Devon	36138.6	35733.5	34579.3
South Devon & Torbay	42312.5	42002.8	41059.6
Newton Abbot Locality	45563.1	45167.6	43954.6
South West	N/A	N/A	N/A
England	N/A	N/A	N/A

# ACCIDENTAL FALLS ADMISSIONS

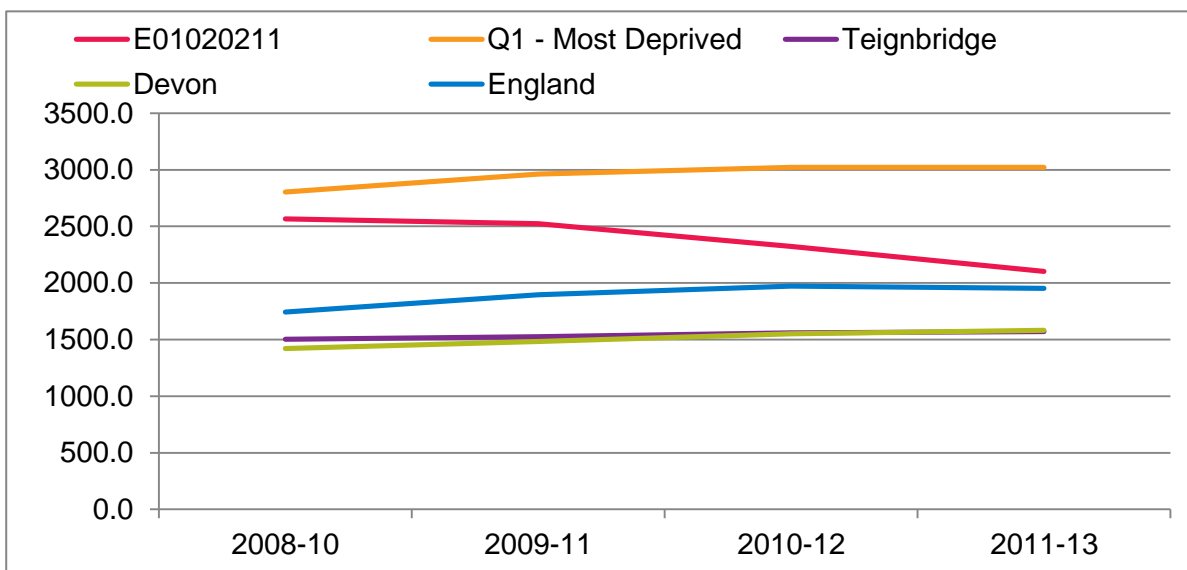
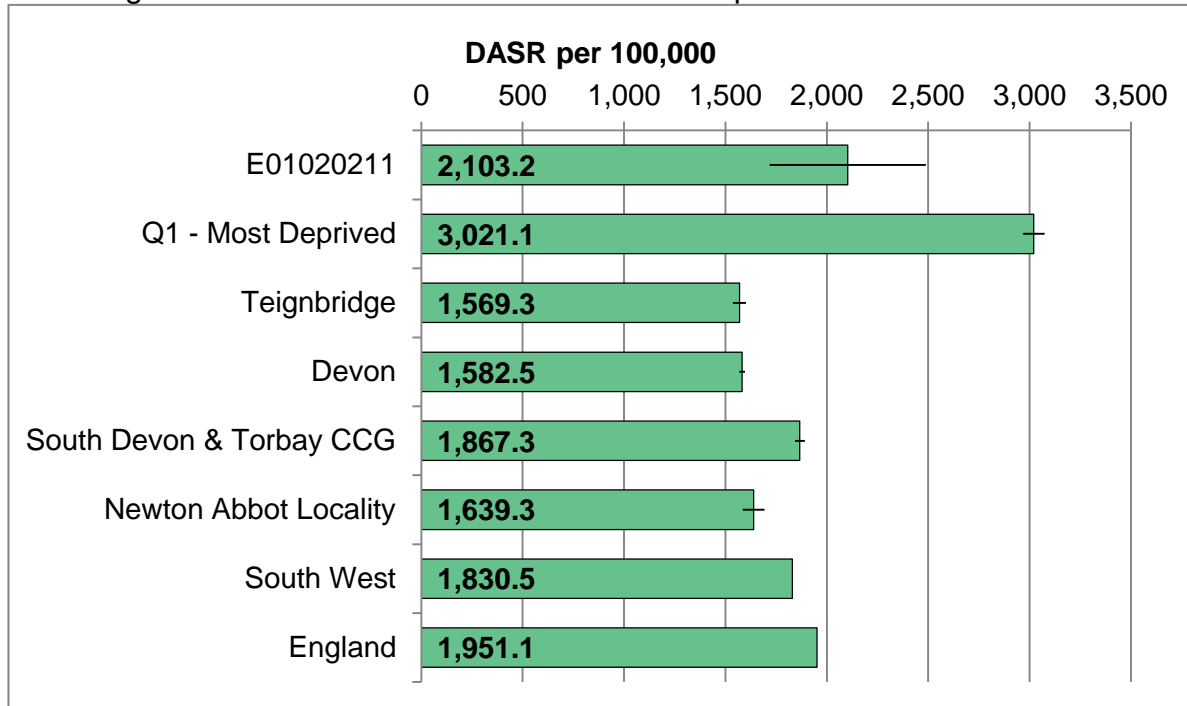
Direct-age standardised rate of hospital admissions following accidental fall.



Area	2008-10	2009-11	2010-12	2011-13
Average per annum	13	13	11	12
LSOA rate	612.2	650.3	611.2	627.7
Q1 - Most Deprived	802.9	828.4	796.0	757.1
Teignbridge	511.9	511.5	487.5	470.3
Devon	500.2	502.2	475.9	453.6
South Devon & Torbay	573.7	570.3	536.0	515.4
Newton Abbot Locality	537.0	538.8	501.5	487.2
South West	N/A	N/A	N/A	N/A
England	N/A	N/A	N/A	N/A

# ALCOHOL-RELATED ADMISSIONS

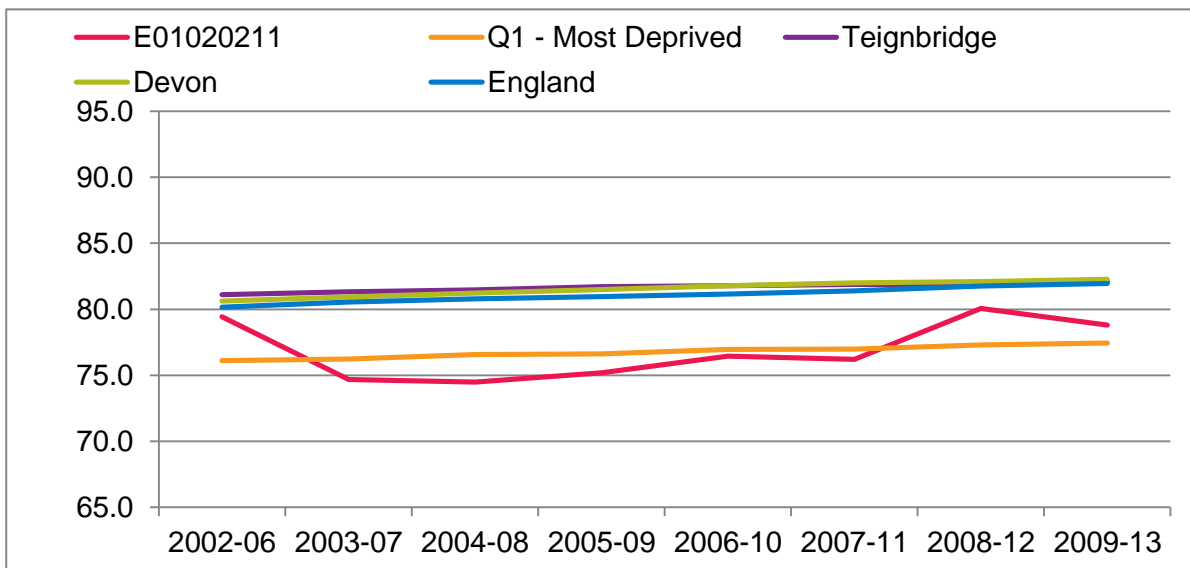
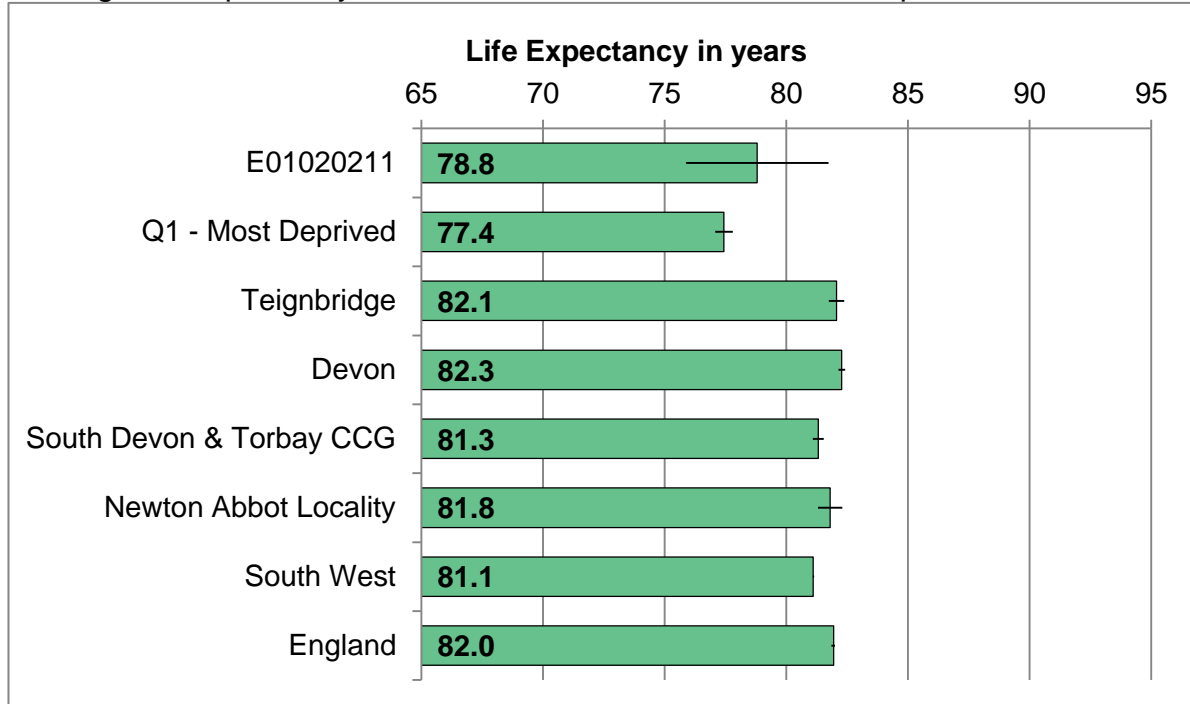
Direct-age standardised rate of alcohol-related hospital admissions.



Area	2008-10	2009-11	2010-12	2011-13
Average per annum	41	43	40	38
LSOA rate	2565.1	2523.3	2322.5	2103.2
Q1 - Most Deprived	2802.4	2961.4	3021.2	3021.1
Teignbridge	1503.2	1526.5	1558.3	1569.3
Devon	1421.1	1482.8	1550.5	1582.5
South Devon & Torbay	1755.5	1804.4	1852.4	1867.3
Newton Abbot Locality	1564.2	1641.0	1685.6	1639.3
South West	1605.4	1753.7	1824.8	1830.5
England	1742.8	1895.2	1973.5	1951.1

# LIFE EXPECTANCY AT BIRTH

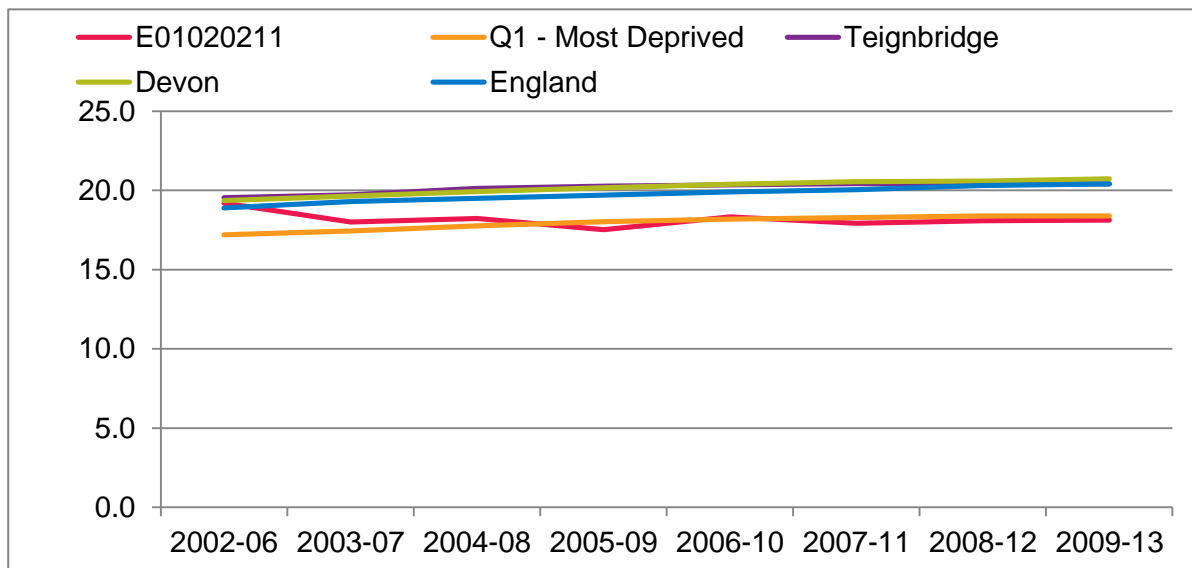
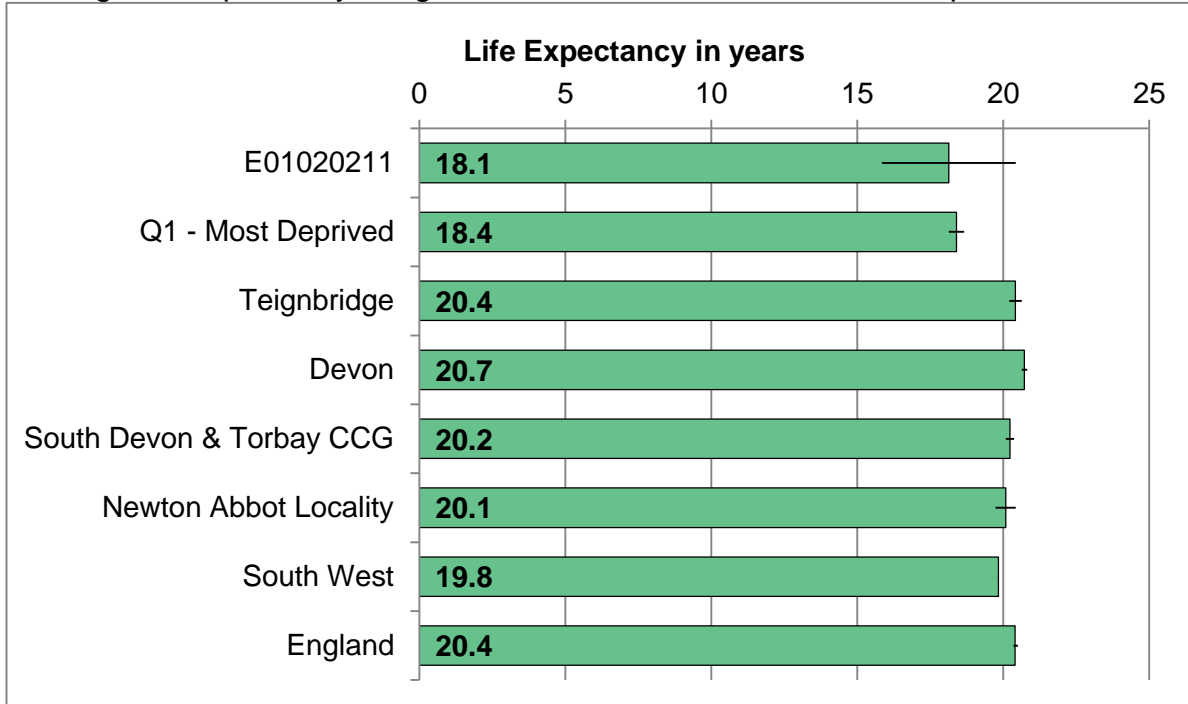
Average life expectancy at birth for residents, combined for all persons.



Area	2004-08	2005-09	2006-10	2007-11	2008-12	2009-13
Deaths per annum	16	16	15	16	14	15
LSOA rate	74.5	75.2	76.5	76.2	80.1	78.8
Q1 - Most Deprived	76.6	76.6	77.0	77.0	77.3	77.4
Teignbridge	81.5	81.7	81.8	81.9	81.9	82.1
Devon	81.2	81.5	81.8	82.0	82.1	82.3
South Devon & Torbay	80.6	80.7	80.9	81.0	81.2	81.3
Newton Abbot Locality	80.8	80.9	81.0	81.4	81.6	81.8
South West	79.7	79.9	80.2	80.5	80.9	81.1
England	80.8	81.0	81.2	81.4	81.8	82.0

# LIFE EXPECTANCY AT AGE 65

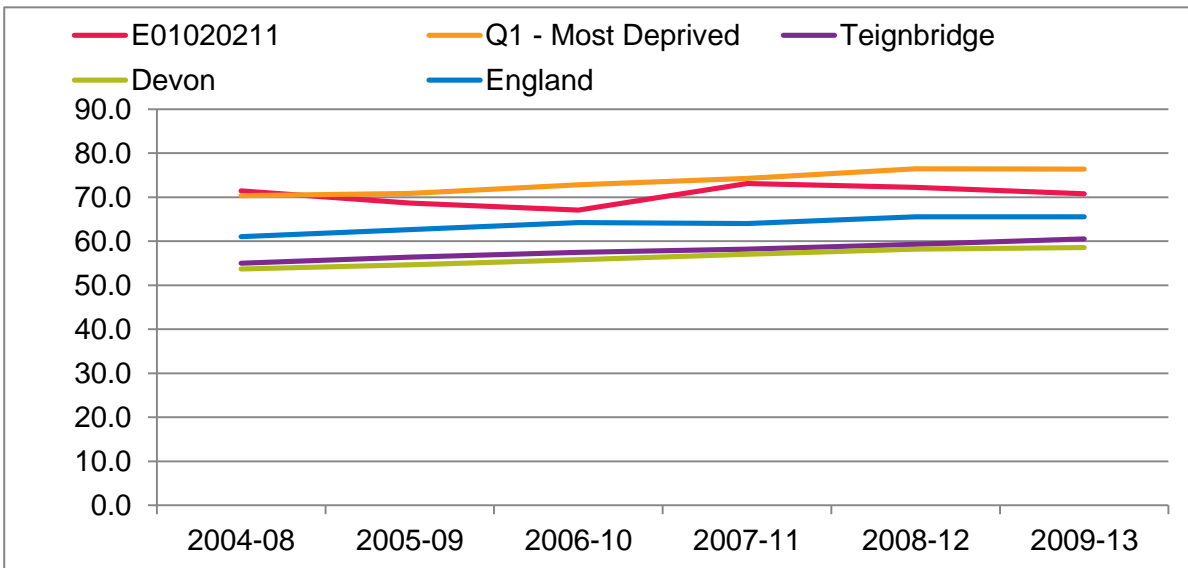
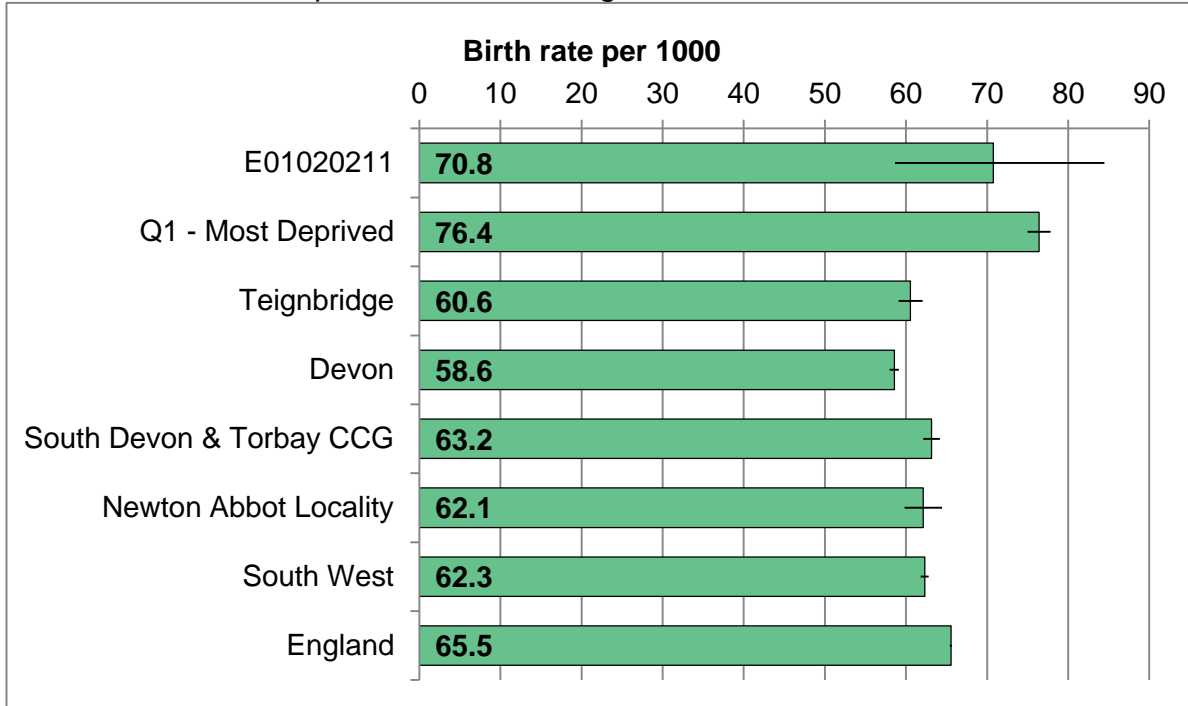
Average life expectancy at age 65 for residents. Combined for all persons.



Area	2004-08	2005-09	2006-10	2007-11	2008-12	2009-13
Deaths per annum	12	12	12	12	12	12
LSOA rate	18.2	17.5	18.3	17.9	18.1	18.1
Q1 - Most Deprived	17.8	18.0	18.2	18.3	18.4	18.4
Teignbridge	20.1	20.3	20.4	20.4	20.4	20.4
Devon	19.9	20.2	20.4	20.5	20.6	20.7
South Devon & Torbay	19.7	19.9	20.1	20.1	20.2	20.2
Newton Abbot Locality	19.3	19.4	19.7	20.1	20.1	20.1
South West	18.8	19.0	19.2	19.4	19.7	19.8
England	19.5	19.7	19.9	20.1	20.3	20.4

# BIRTH RATE

Number of live births per 1,000 females aged 15 to 44.



Area	2004-08	2005-09	2006-10	2007-11	2008-12	2009-13
Births per annum	22	22	21	24	23	23
LSOA rate	71.4	68.6	67.1	73.1	72.2	70.8
Q1 - Most Deprived	70.4	70.9	72.8	74.3	76.4	76.4
Teignbridge	55.0	56.4	57.5	58.2	59.3	60.6
Devon	53.7	54.6	55.8	57.1	58.2	58.6
South Devon & Torbay	56.5	57.7	58.9	60.6	61.9	63.2
Newton Abbot Locality	54.2	56.3	57.5	59.2	59.7	62.1
South West	58.0	59.6	61.0	60.8	62.3	62.3
England	61.0	62.7	64.2	64.0	65.5	65.5

# SOURCES

**Population** **Annual, 2001 to 2012**  
Office for National Statistics Mid Year Population Estimates by LSOA.

**Index of Multiple Deprivation** **2004, 2007 and 2010**  
English Indices of Deprivation. Rank on overall Index of Multiple Deprivation.

**Indices of Deprivation Domains** **2004, 2007 and 2010**  
English Indices of Deprivation. Rank scores across all domains.

**Income Deprivation** **2004, 2007 and 2010**  
English Indices of Deprivation. Income Domain Score (% of population).

**Employment Deprivation** **2004, 2007 and 2010**  
English Indices of Deprivation. Employment Domain Score (% of population).

**Jobseekers Allowance Claimant Rate** **Annual, 2005 to 2014**  
Claimant Count from nomisweb.com. Claimant Rate in June of calendar year.

**Emergency Admissions** **Rolling Annual, 2008-10 to 2011-13**  
Secondary Uses Services. Direct-age standardised rate per 100,000.

**Elective Admissions** **Rolling Annual, 2008-10 to 2011-13**  
Secondary Uses Services. Direct-age standardised rate per 100,000.

**A&E Attendances** **Annual, 2011 to 2013**  
Secondary Uses Services. Direct-age standardised rate per 100,000.

**Accidental Falls Admissions** **Rolling Annual, 2008-10 to 2011-13**  
Secondary Uses Services. Direct-age standardised rate per 100,000.

**Alcohol-Related Admissions** **Rolling Annual, 2008-10 to 2011-13**  
Secondary Uses Services. Direct-age standardised rate per 100,000.

**Life Expectancy at Birth** **Rolling Annual ,2002-06 to 2009-13**  
Primary Care Mortality Database and ONS Annual Mortality Extracts.

**Life Expectancy at Age 65** **Rolling Annual ,2002-06 to 2009-13**  
Primary Care Mortality Database and ONS Annual Mortality Extracts.

**Birth Rate** **Rolling Annual, 2004-08 to 2009-13**  
Office for National Statistics Quarterly Births Extracts. Rate per 1,000.

Last updated: January 2015

Queries to: [publichealthintelligence@devon.gov.uk](mailto:publichealthintelligence@devon.gov.uk)

Next update due: June 2015 (2014 admissions and life expectancy)

**Produced by the Devon Public Health Intelligence Team**