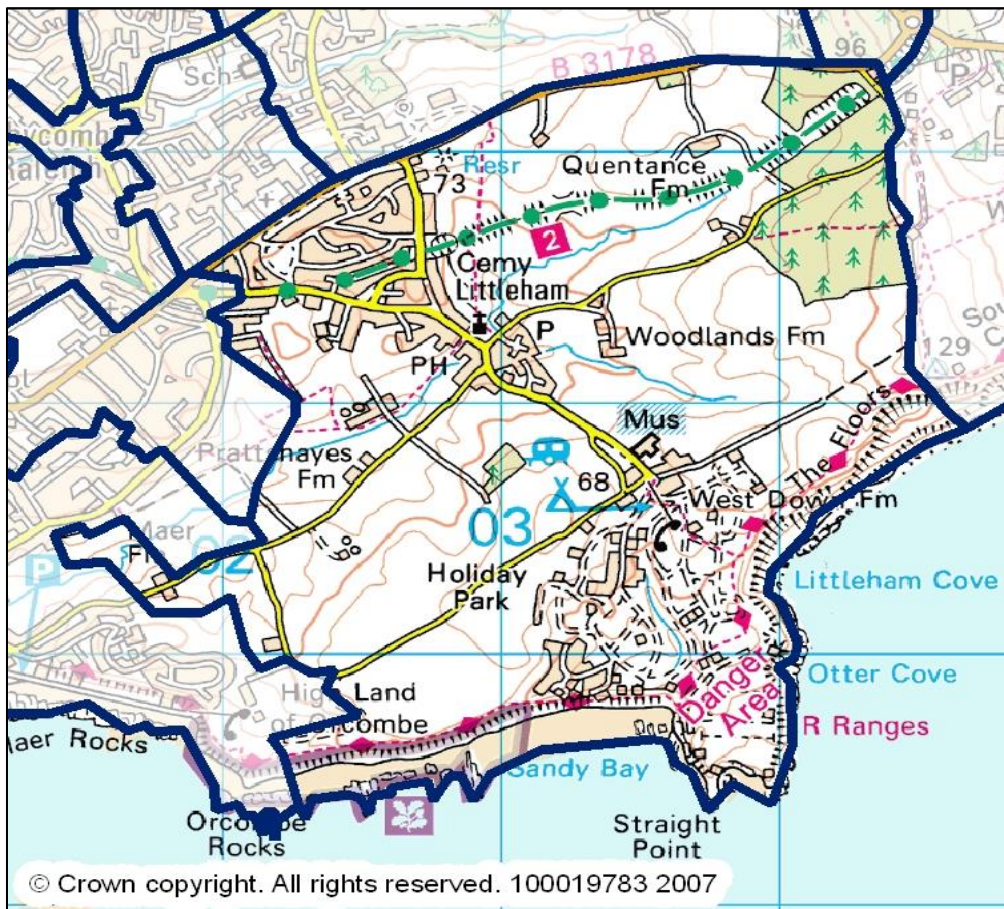


# COMMUNITY BASELINE PROFILE 2015

## LOWER SUPER OUTPUT AREA (LSOA) BASED

### E01019914

<b>Description</b>	Exmouth - Littleham
<b>Deprivation Group</b>	Q1 - Most Deprived
<b>District</b>	East Devon
<b>County</b>	Devon
<b>CCG</b>	NEW Devon CCG
<b>CCG Locality</b>	Eastern Locality
<b>CCG Sub-Locality</b>	WEB Sub-Locality



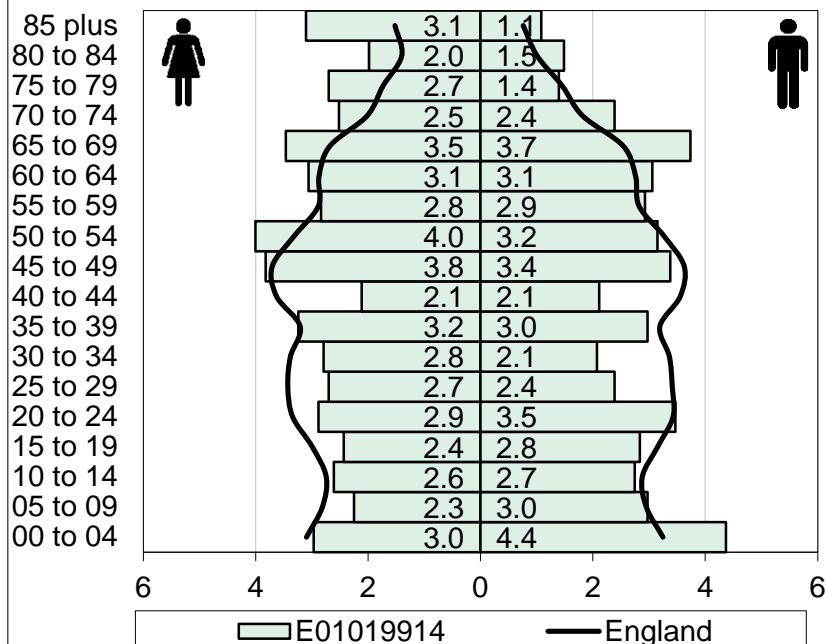
#### Contents

Cover	Page 1
Population	Page 2
Index of Multiple Deprivation	Page 3
Indices of Deprivation Domains	Page 4
Income Deprivation	Page 5
Employment Deprivation	Page 6
JSA Claimant Rate	Page 7
Emergency Admissions	Page 8

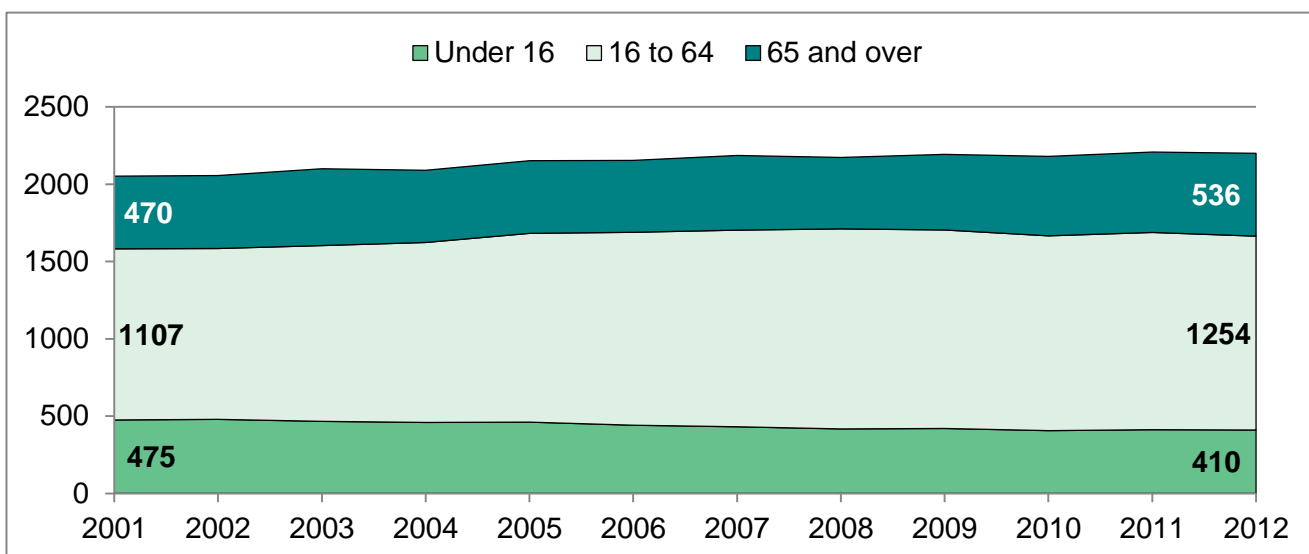
Elective Admissions	Page 9
A&E Attendances	Page 10
Accidental Falls Admissions	Page 11
Alcohol-Related Admissions	Page 12
Life Expectancy at Birth	Page 13
Life Expectancy at Age 65	Page 14
Birth Rate	Page 15
Sources	Page 16

# POPULATION

## POPULATION PYRAMID AREA vs NATIONAL PROFILE



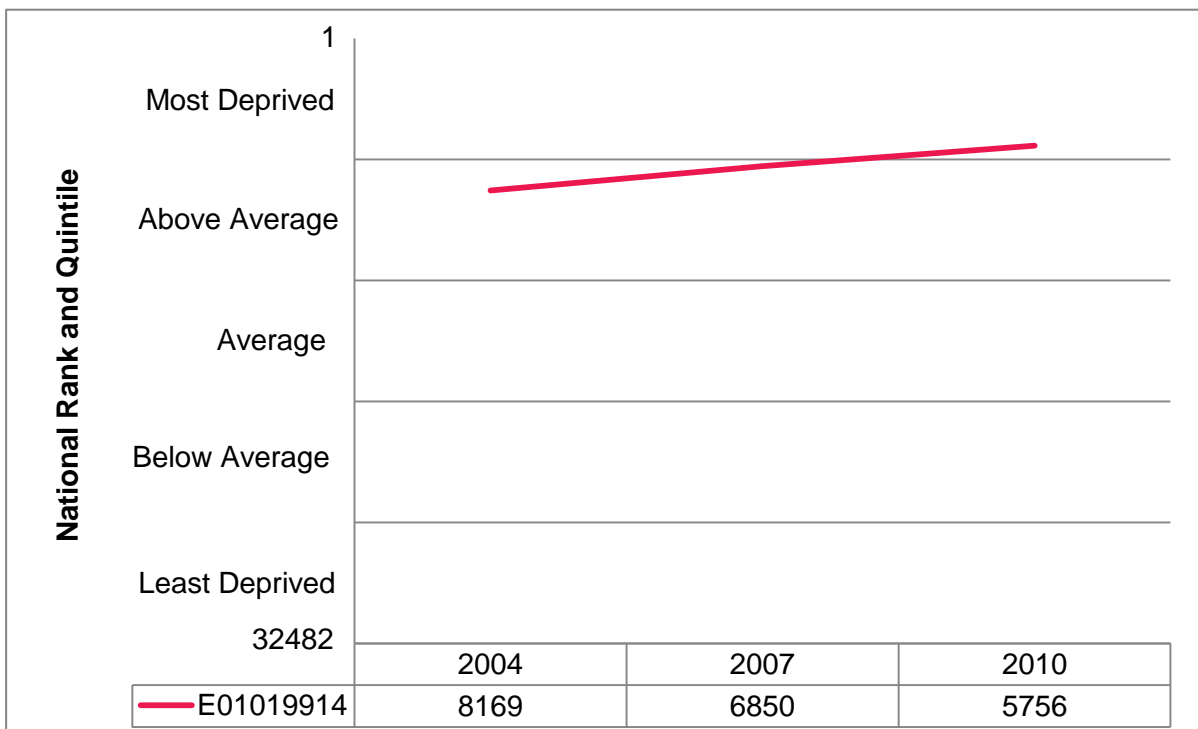
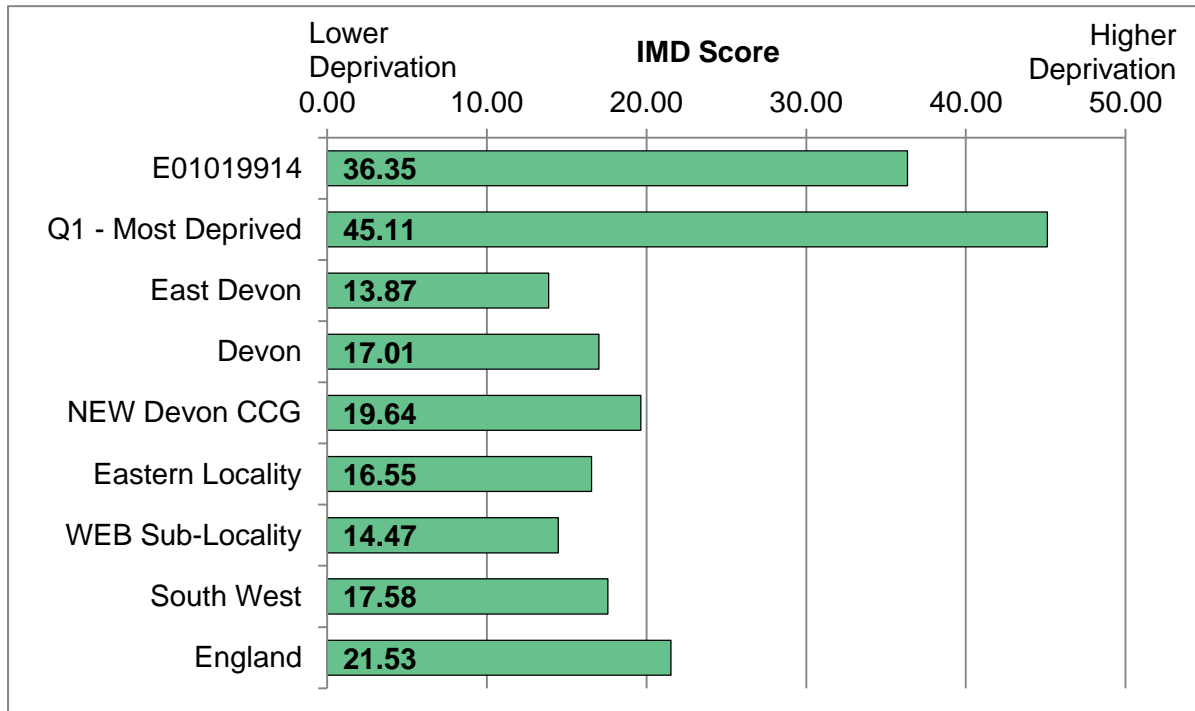
Age	Female	Male
0-4	66	97
5-9	50	66
10-14	58	61
15-19	54	63
20-24	64	77
25-29	60	53
30-34	62	46
35-39	72	66
40-44	47	47
45-49	85	75
50-54	89	70
55-59	63	65
60-64	68	68
65-69	77	83
70-74	56	53
75-79	60	31
80-84	44	33
85+	69	24
<b>Total</b>	<b>1144</b>	<b>1078</b>



Area	00-15	16-64	65-84	85+	Total
LSOA number	427	1265	437	93	2222
LSOA rate	19.2%	56.9%	19.7%	4.2%	100.0%
Q1 - Most Deprived	19.5%	65.2%	13.1%	2.2%	100.0%
East Devon	15.4%	55.1%	24.6%	4.8%	100.0%
Devon	16.3%	59.7%	20.4%	3.5%	100.0%
NEW Devon CCG	16.8%	61.6%	18.6%	3.1%	100.0%
Eastern Locality	16.3%	60.8%	19.4%	3.6%	100.0%
WEB Sub-Localities	15.9%	57.6%	21.9%	4.6%	100.0%
South West	17.5%	61.7%	17.8%	3.0%	100.0%
England	19.0%	63.8%	15.0%	2.3%	100.0%

# INDEX OF MULTIPLE DEPRIVATION

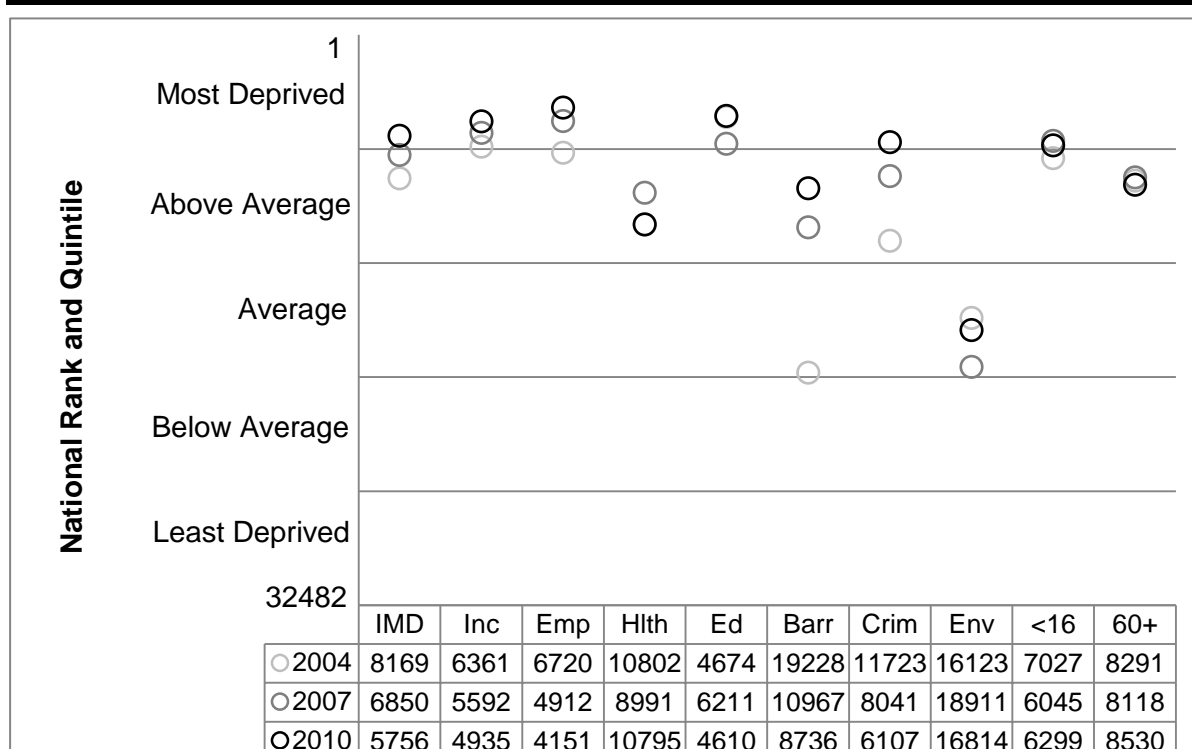
The English Indices of Deprivation measures relative levels of deprivation in small areas of England called Lower Super Output Areas (LSOAs). The overall measure is called the Index of Multiple Deprivation. This produces an IMD score (bar chart below showing score in 2010) and a national rank out of 32482 LSOAs (trend in national rank shown in line chart below). Deprivation and health are closely connected, with areas with higher levels of deprivation tending to experience poorer health outcomes. Reducing social inequalities in health is a major focus of the work of Public Health teams.



# INDICES OF DEPRIVATION DOMAINS

The Indices of Deprivation are comprised of an overall Index of Multiple Deprivation (IMD); seven domains which contribute to the overall index covering income, employment, health, education, barriers to housing and services, crime and living environment; and two supplementary indices relating to income deprivation in children (under 16) and older people (60+).

The following chart compares an area's national rank on the IMD, seven domain and two supplementary indices in 2004, 2007 and 2010, illustrated below by circles of increasing darkness. The value axis ranges from the most deprived LSOA in the country (1) to the least deprived LSOA in the country (32482) on a given measure, and the chart is further divided into five sections highlighting the national deprivation group (quintile). This gives an indicator of the area's relative position nationally and how this has changed over time.

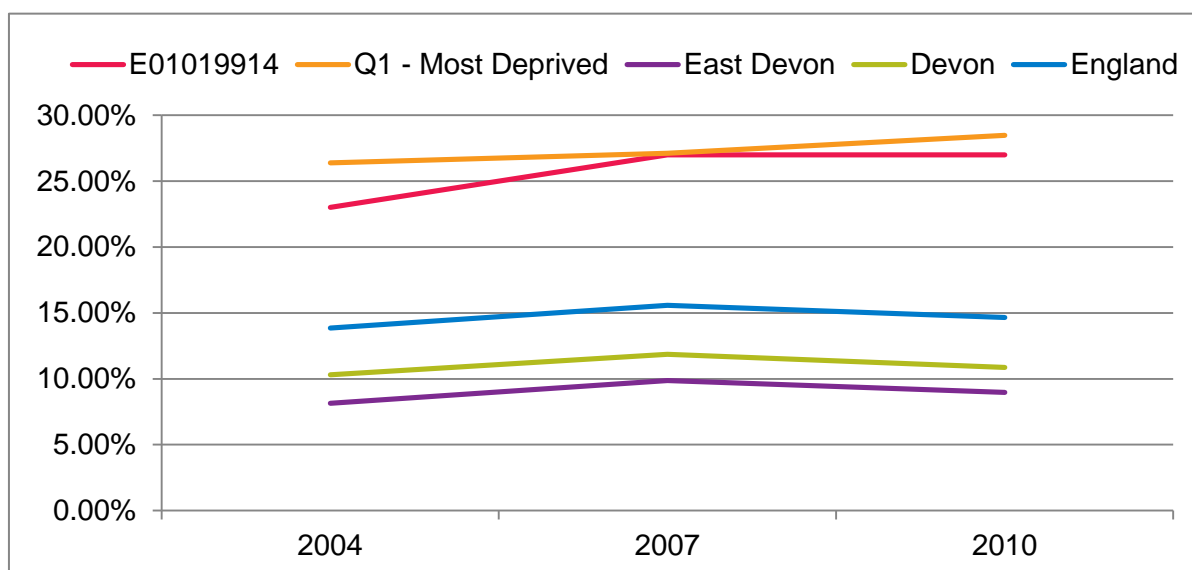
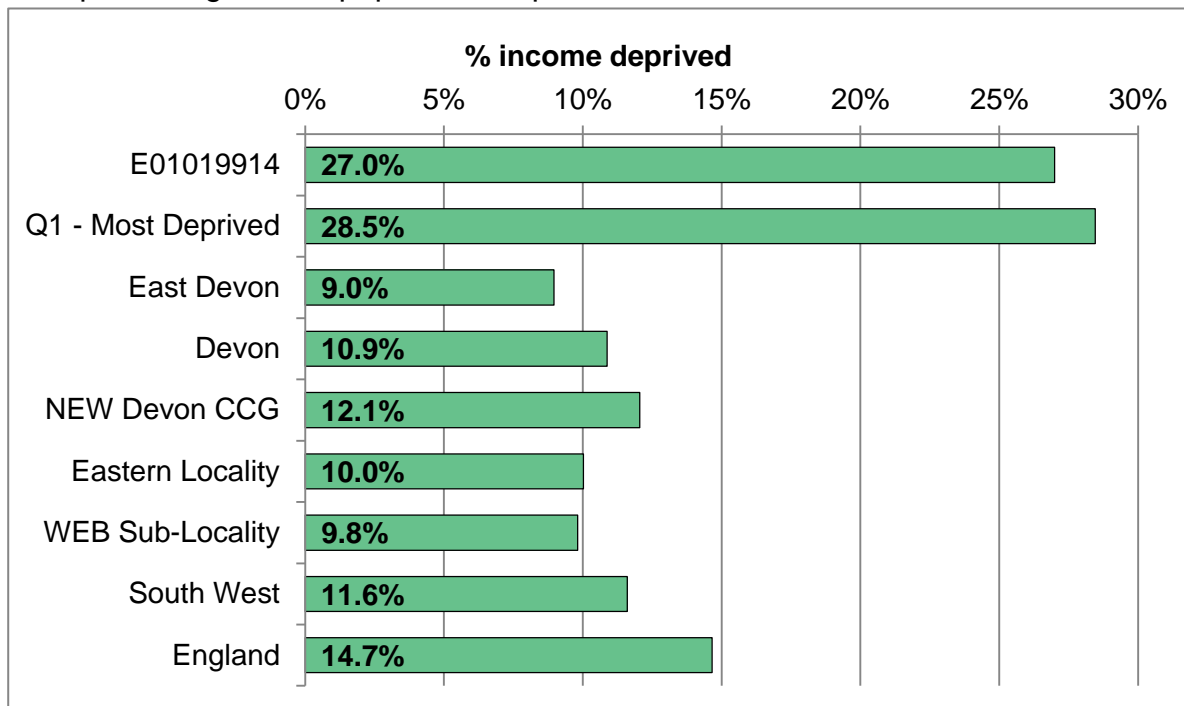


## Indices of Deprivation Domain Descriptions

Key	Domain
IMD	Index of Multiple Deprivation.
Inc	Income Domain. Persons dependent on state benefits and tax credits.
Emp	Employment Domain. Persons involuntarily excluded from the labour market.
Hlth	Health Domain. Covers mental health, admissions, illness & premature death.
Ed	Education Domain. Measures education attainment and participation.
Barr	Barriers to Housing and Services Domain. Covers affordability and distance.
Crim	Crime Domain. Levels of violence, burglary, theft and criminal damage.
Env	Living Environment Domain. Quality of indoor and outdoor environment.
<16	Income Deprivation Affecting Children Index (IDACI). See income.
60+	Income Deprivation Affecting Older People Index (IDAOP). See income.

# INCOME DEPRIVATION

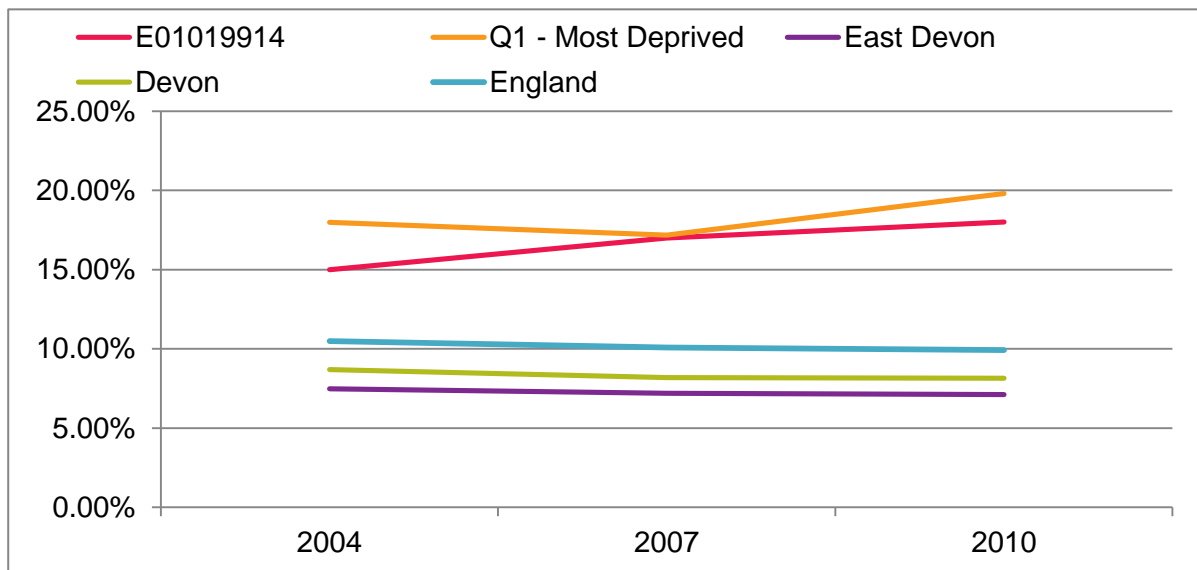
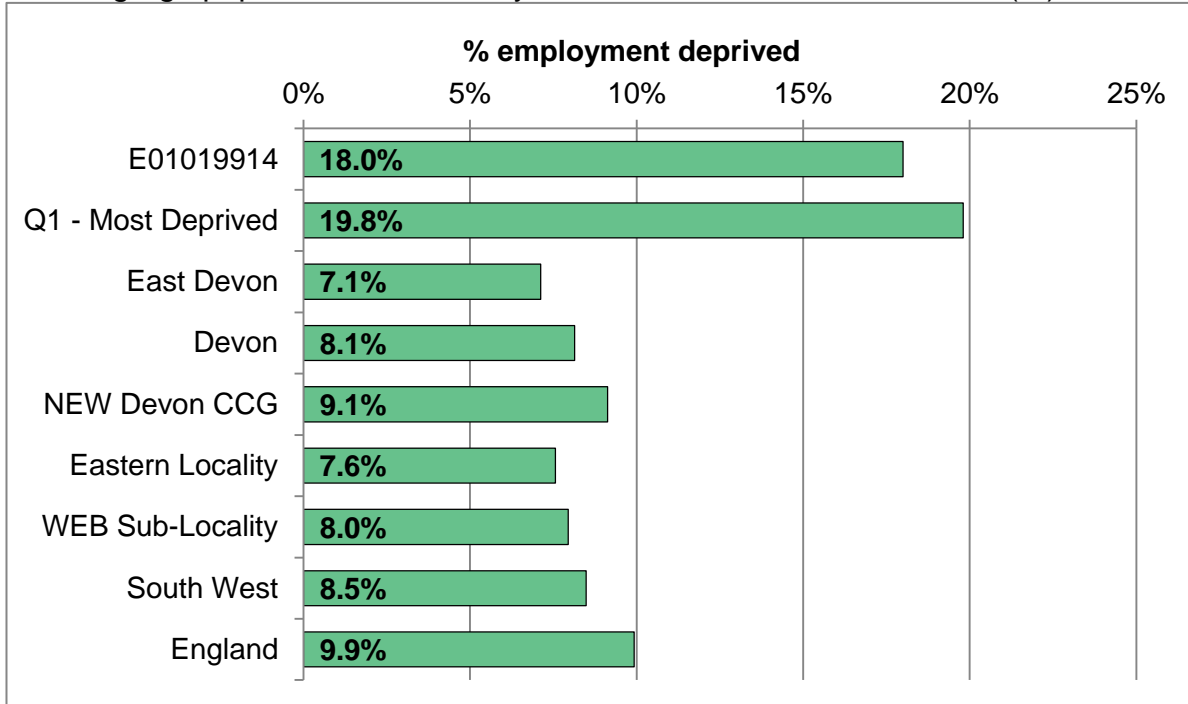
The percentage of the population dependent on benefits or tax credits.



Area	2004	2007	2010
Total per annum	-	-	-
LSOA rate	23.0%	27.0%	27.0%
Q1 - Most Deprived	26.4%	27.1%	28.5%
East Devon	8.2%	9.9%	9.0%
Devon	10.3%	11.8%	10.9%
NEW Devon CCG	11.8%	13.1%	12.1%
Eastern Locality	9.8%	10.8%	10.0%
WEB Sub-Localty	9.7%	9.7%	9.7%
South West	10.6%	12.3%	11.6%
England	13.9%	15.6%	14.7%

# EMPLOYMENT DEPRIVATION

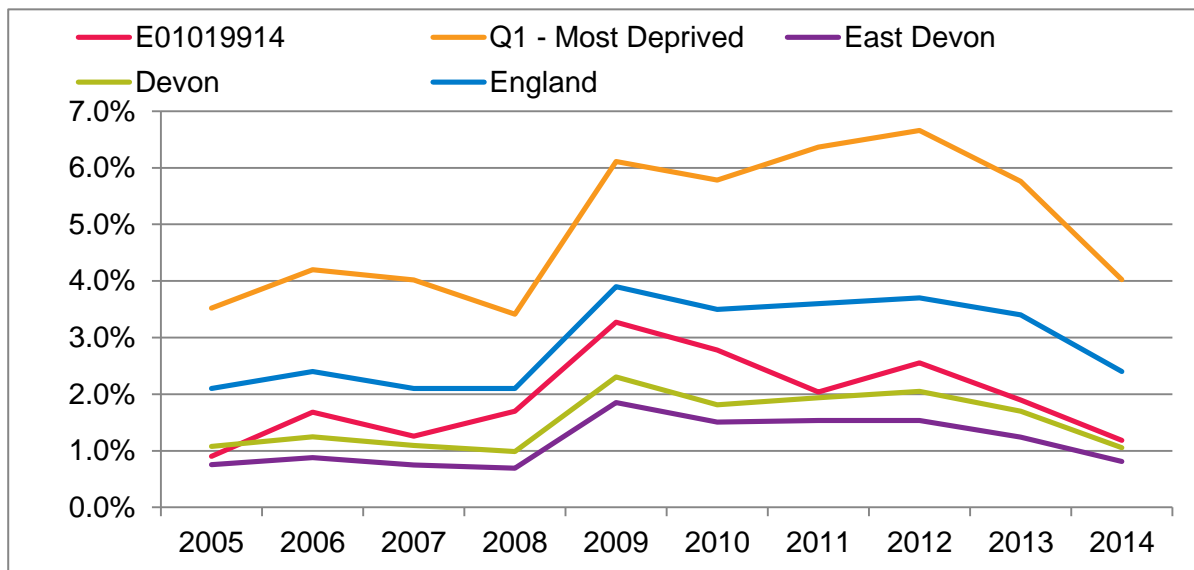
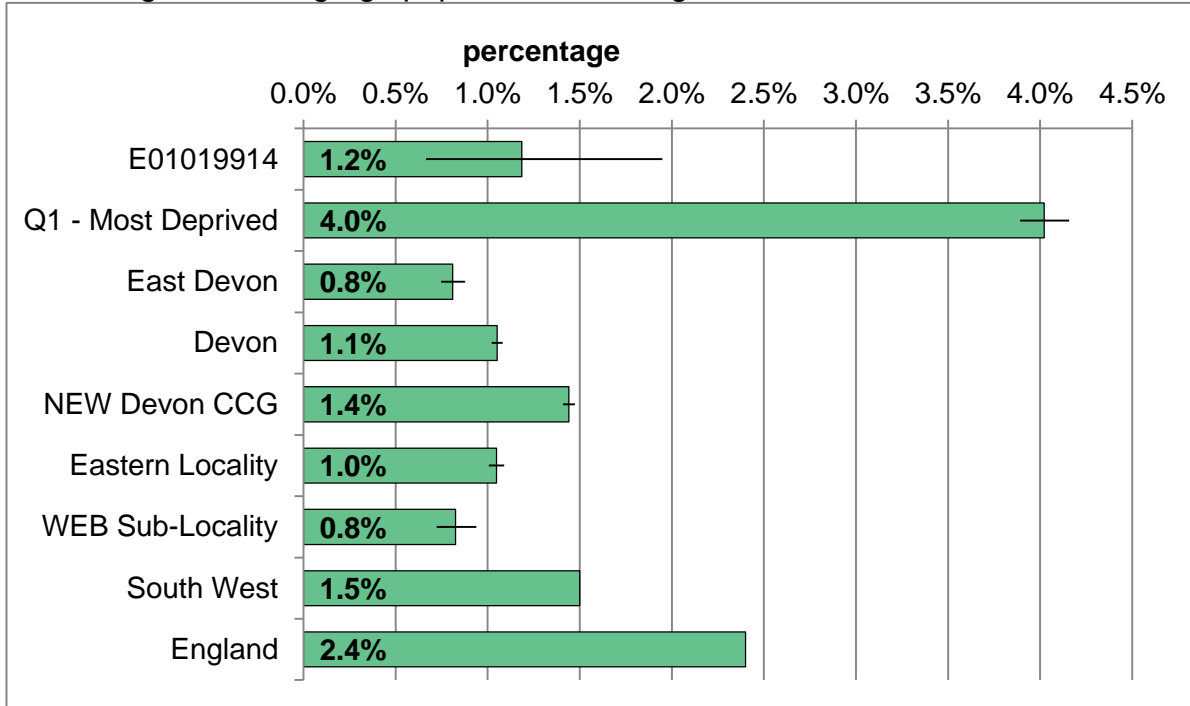
Working-age population involuntarily excluded from the labour market (%).



Area	2004	2007	2010
Total per annum	-	-	-
LSOA rate	15.0%	17.0%	18.0%
Q1 - Most Deprived	18.0%	17.2%	19.8%
East Devon	7.5%	7.2%	7.1%
Devon	8.7%	8.2%	8.1%
NEW Devon CCG	9.7%	9.3%	9.1%
Eastern Locality	8.0%	7.5%	7.6%
WEB Sub-Locality	8.3%	7.9%	8.0%
South West	8.5%	8.5%	8.5%
England	10.5%	10.1%	9.9%

# JOBSEEKERS ALLOWANCE CLAIMANT RATE

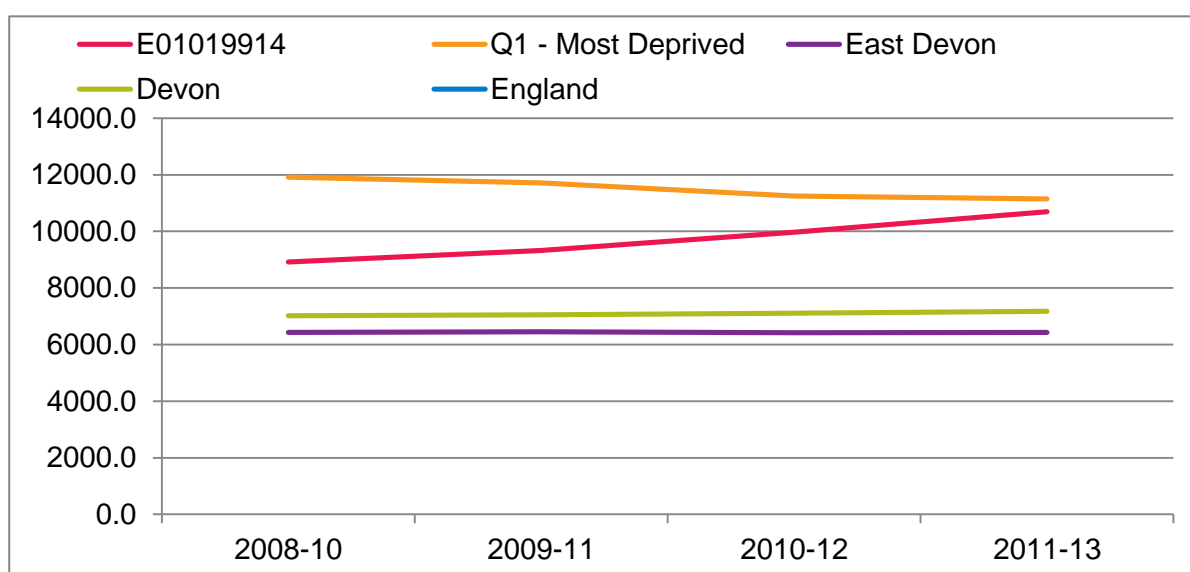
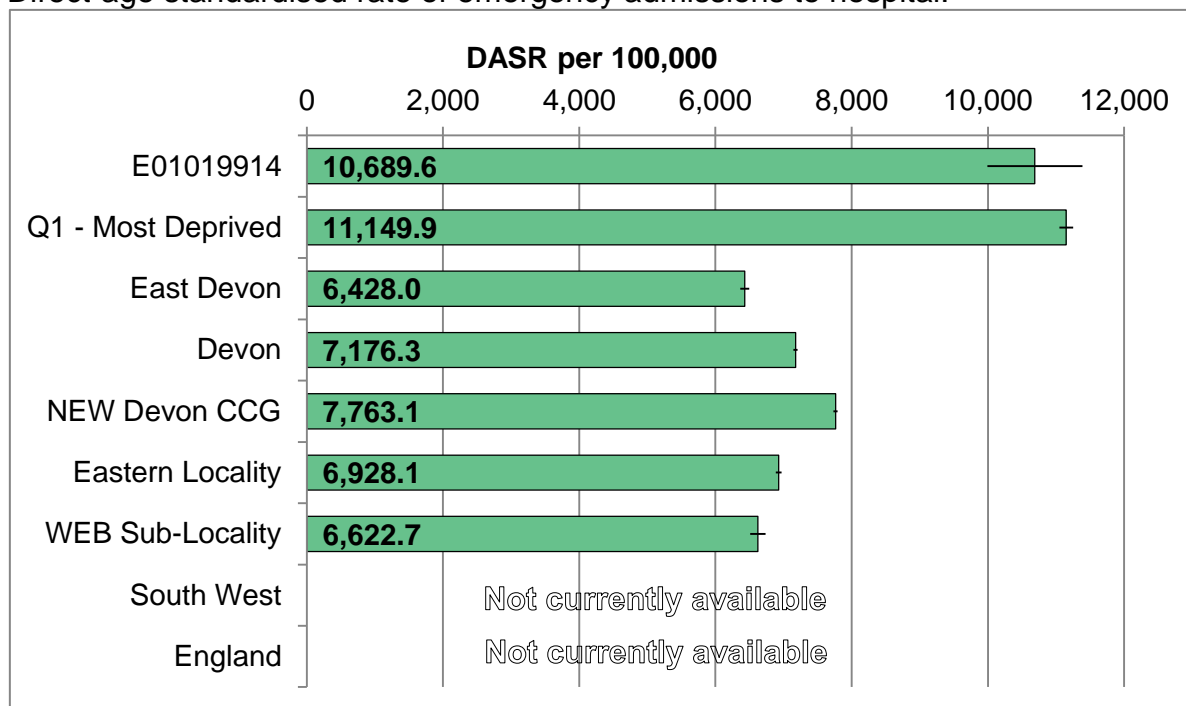
Percentage of working-age population receiving Jobseekers Allowance.



Area	2009	2010	2011	2012	2013	2014
Total claimants	42	35	26	32	24	15
LSOA rate	3.3%	2.8%	2.0%	2.6%	1.9%	1.2%
Q1 - Most Deprived	6.1%	5.8%	6.4%	6.7%	5.8%	4.0%
East Devon	1.9%	1.5%	1.5%	1.5%	1.2%	0.8%
Devon	2.3%	1.8%	1.9%	2.0%	1.7%	1.1%
NEW Devon CCG	2.8%	2.4%	2.5%	2.6%	2.2%	1.4%
Eastern Locality	2.3%	1.9%	2.0%	2.0%	1.6%	1.0%
WEB Sub-Localty	2.1%	1.7%	1.7%	1.8%	1.2%	0.8%
South West	2.9%	2.4%	2.4%	2.6%	2.3%	1.5%
England	3.9%	3.5%	3.6%	3.7%	3.4%	2.4%

# EMERGENCY ADMISSIONS

Direct-age standardised rate of emergency admissions to hospital.

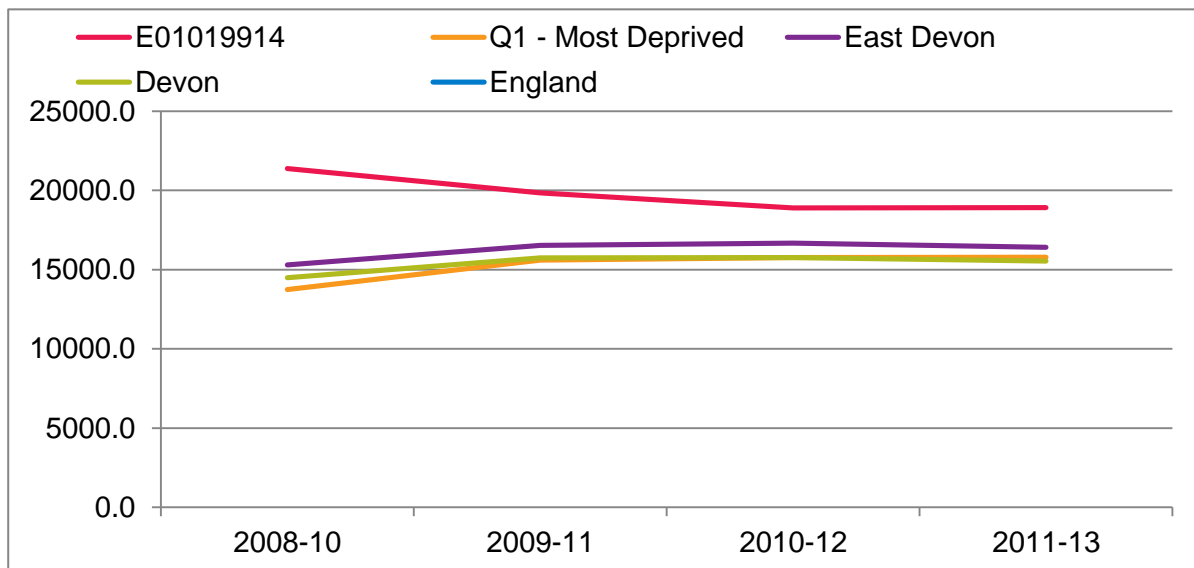
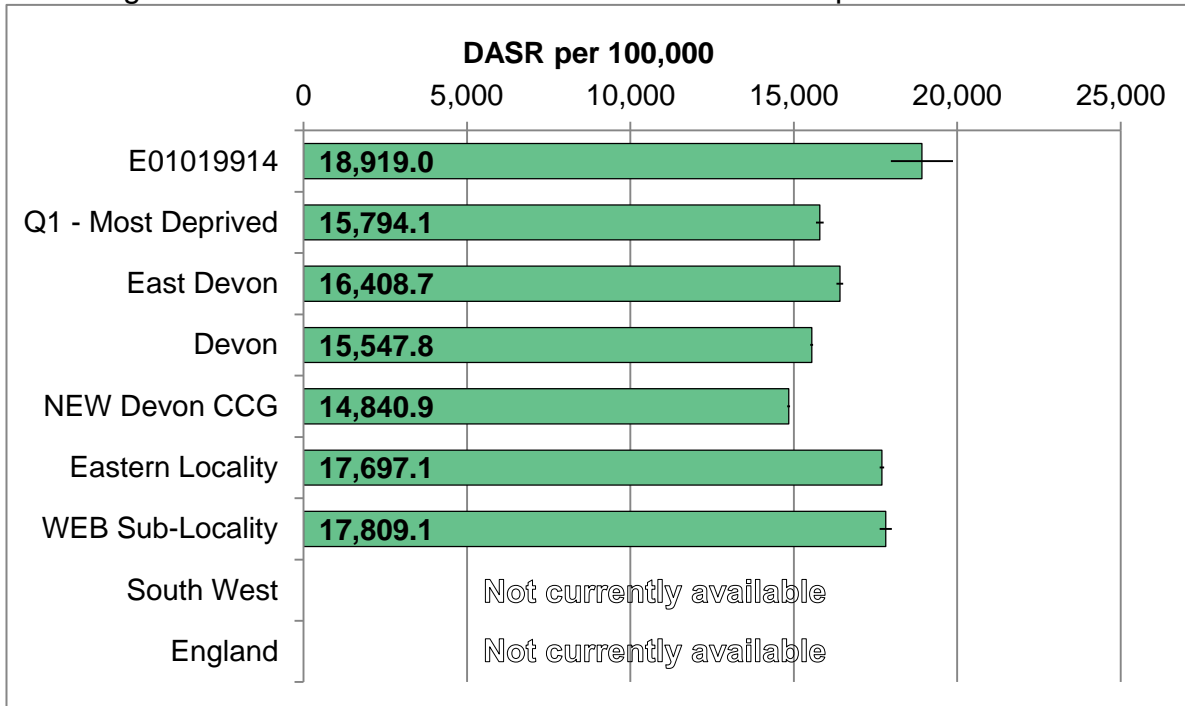


Area	2008-10	2009-11	2010-12	2011-13
Average per annum	237	253	276	301
LSOA rate	8919.6	9325.1	9975.4	10689.6
Q1 - Most Deprived	11910.4	11715.0	11252.2	11149.9
East Devon	6427.6	6448.3	6423.6	6428.0
Devon	7014.6	7049.0	7111.0	7176.3
NEW Devon CCG	8042.2	7963.9	7799.3	7763.1
Eastern Locality	6760.6	6775.8	6863.7	6928.1
WEB Sub-Localty	6616.9	6634.4	6601.7	6622.7
South West	N/A	N/A	N/A	N/A
England	N/A	N/A	N/A	N/A



# ELECTIVE ADMISSIONS

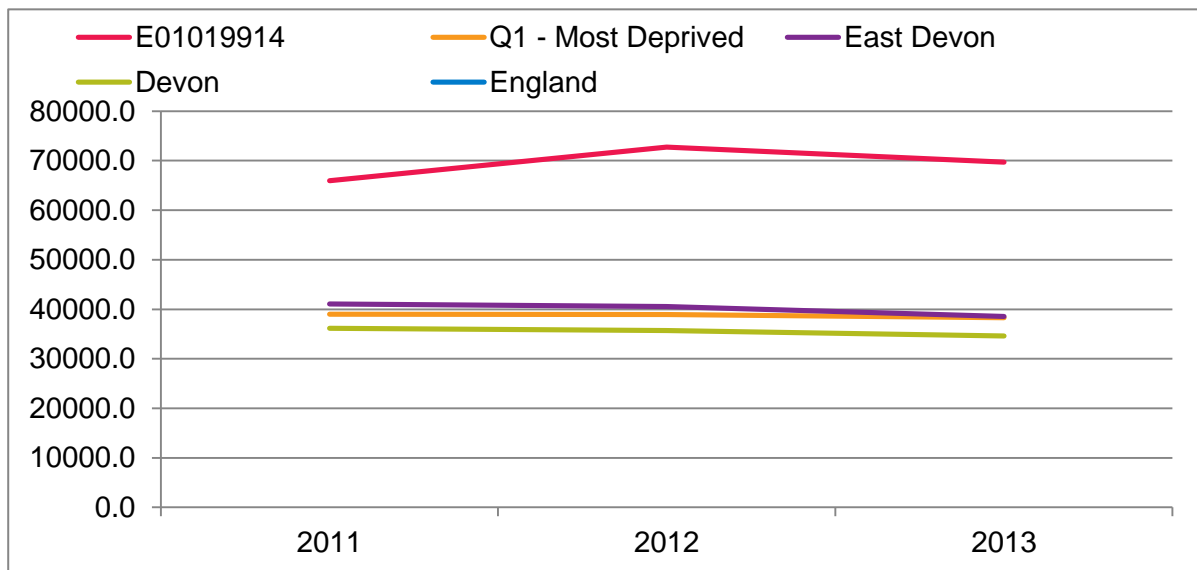
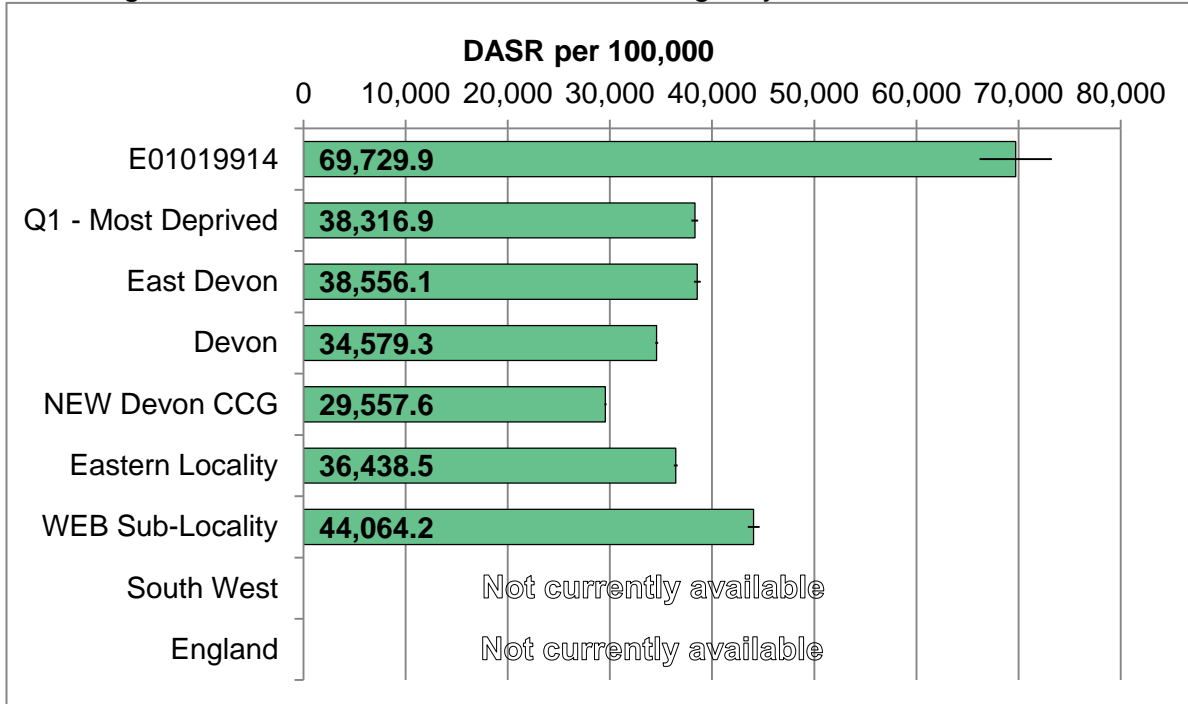
Direct-age standardised rate of elective admissions to hospital.



Area	2008-10	2009-11	2010-12	2011-13
Average per annum	528	503	502	507
LSOA rate	21387.5	19846.5	18902.5	18919.0
Q1 - Most Deprived	13745.3	15592.9	15764.3	15794.1
East Devon	15296.4	16528.1	16674.2	16408.7
Devon	14483.7	15735.4	15757.9	15547.8
NEW Devon CCG	13489.7	14767.4	14873.6	14840.9
Eastern Locality	16739.1	18247.2	18184.9	17697.1
WEB Sub-Localty	16601.6	18215.3	18270.5	17809.1
South West	N/A	N/A	N/A	N/A
England	N/A	N/A	N/A	N/A

# A&E ATTENDANCES

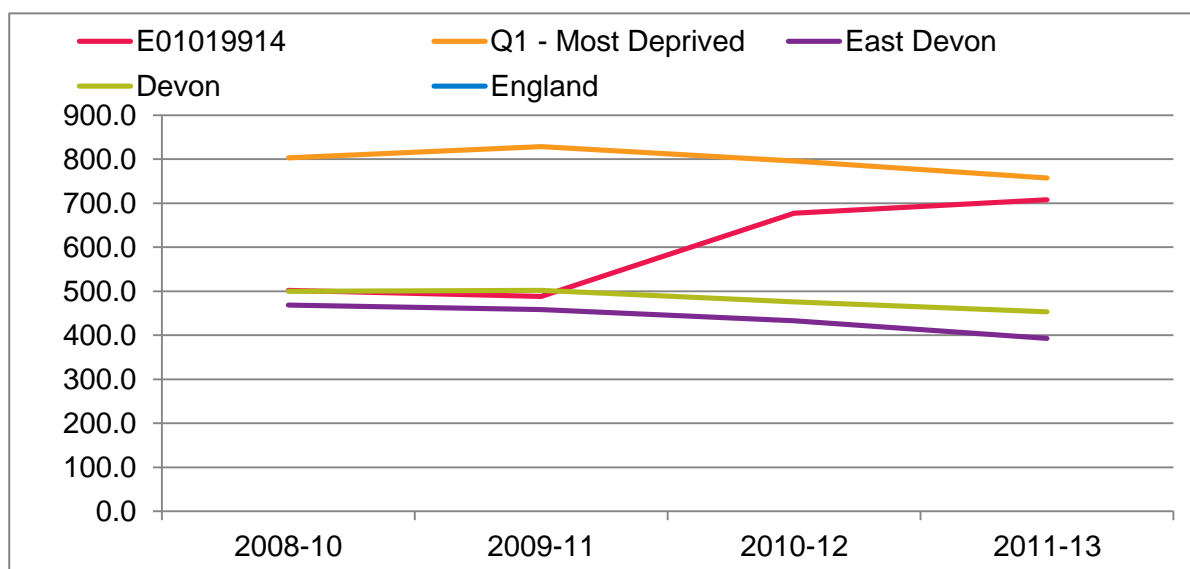
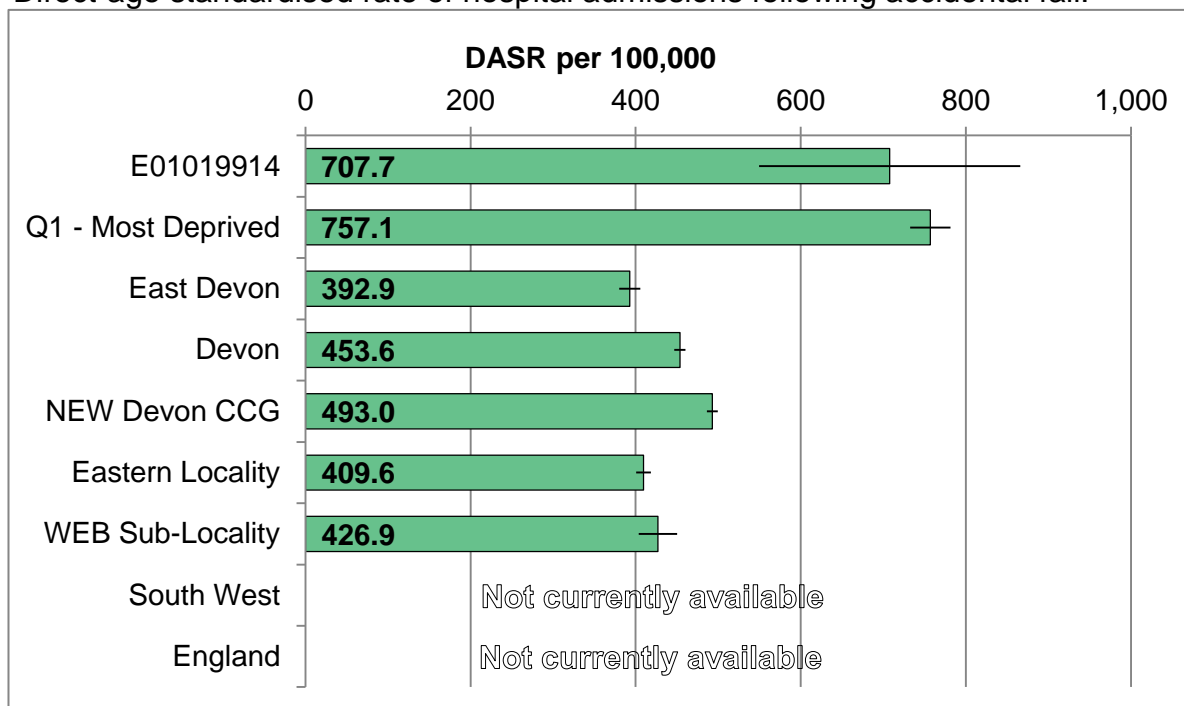
Direct-age standardised rate of accident & emergency / MIU attendances.



Area	2011	2012	2013
Average per annum	1426	1558	1486
LSOA rate	65970.6	72748.1	69729.9
Q1 - Most Deprived	39000.9	38944.7	38316.9
East Devon	41042.4	40569.9	38556.1
Devon	36138.6	35733.5	34579.3
NEW Devon CCG	30749.8	30508.1	29557.6
Eastern Locality	38246.3	37784.0	36438.5
WEB Sub-Localty	48089.2	47961.0	44064.2
South West	N/A	N/A	N/A
England	N/A	N/A	N/A

# ACCIDENTAL FALLS ADMISSIONS

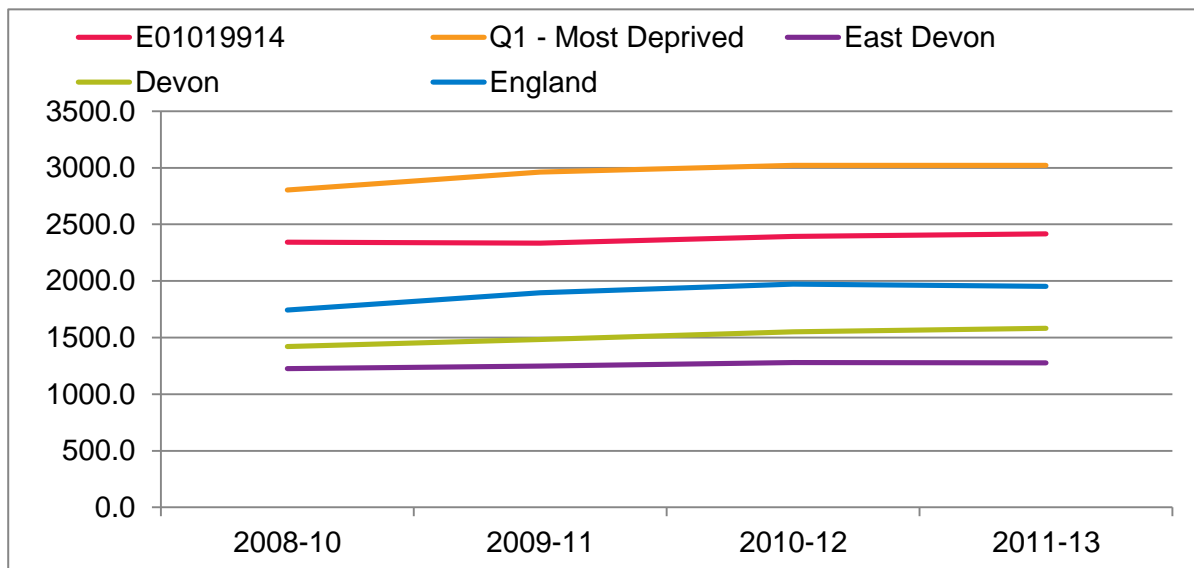
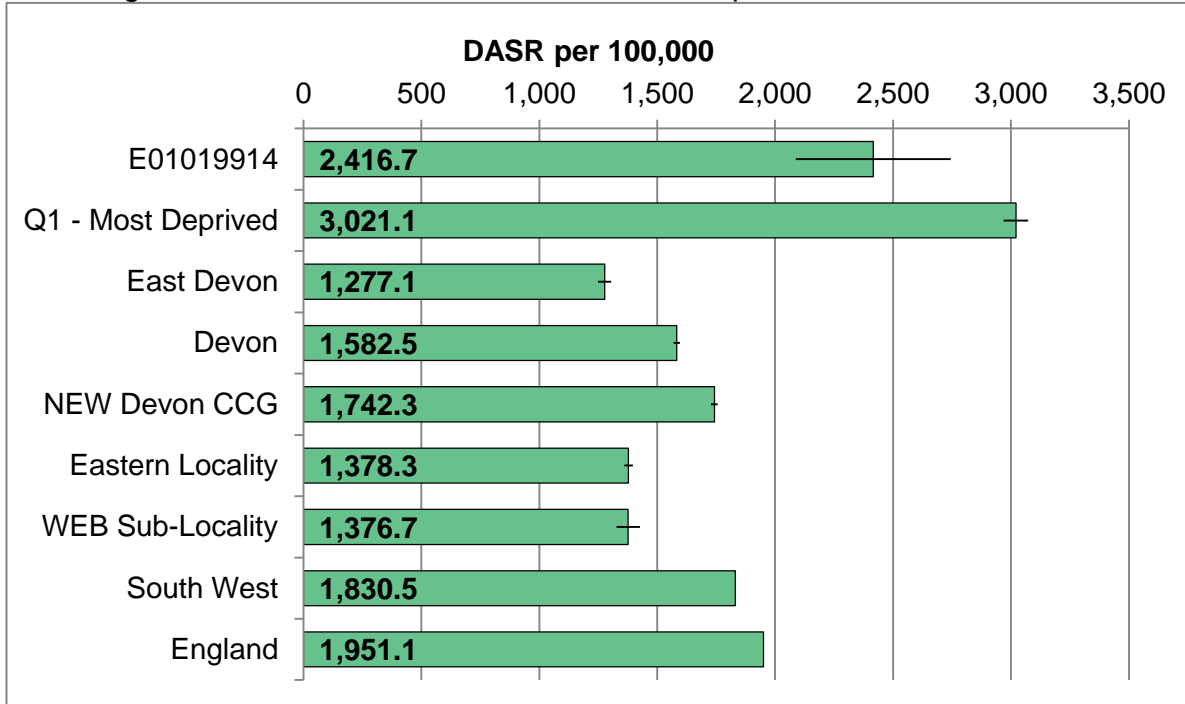
Direct-age standardised rate of hospital admissions following accidental fall.



Area	2008-10	2009-11	2010-12	2011-13
Average per annum	21	23	25	26
LSOA rate	501.7	488.5	677.2	707.7
Q1 - Most Deprived	802.9	828.4	796.0	757.1
East Devon	468.3	458.1	432.7	392.9
Devon	500.2	502.2	475.9	453.6
NEW Devon CCG	535.6	544.5	521.3	493.0
Eastern Locality	508.7	491.1	451.8	409.6
WEB Sub-Localty	467.1	478.7	457.5	426.9
South West	N/A	N/A	N/A	N/A
England	N/A	N/A	N/A	N/A

# ALCOHOL-RELATED ADMISSIONS

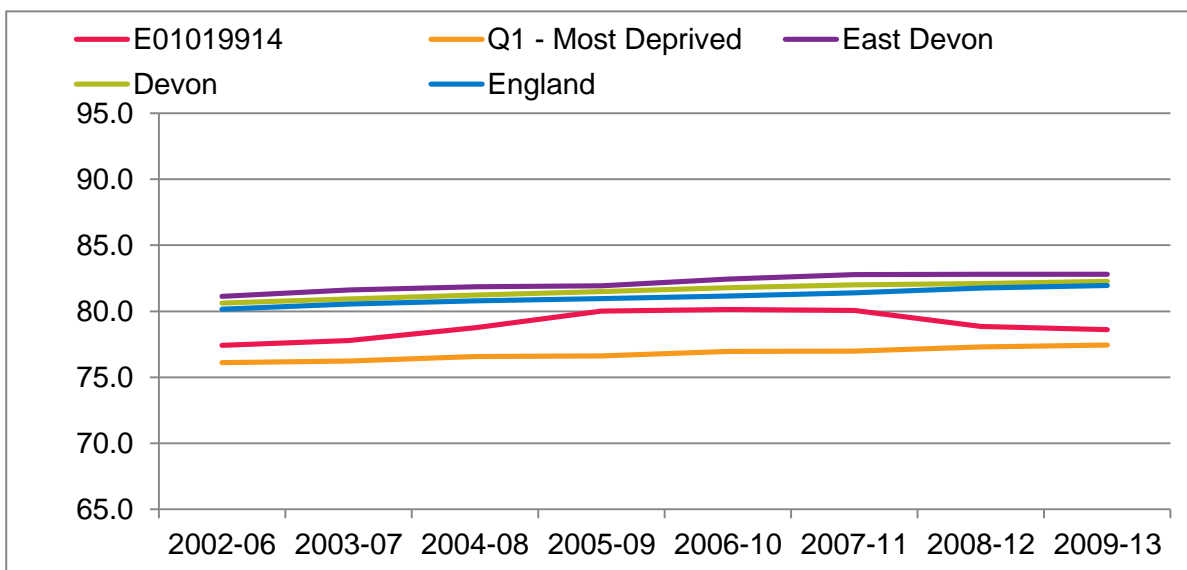
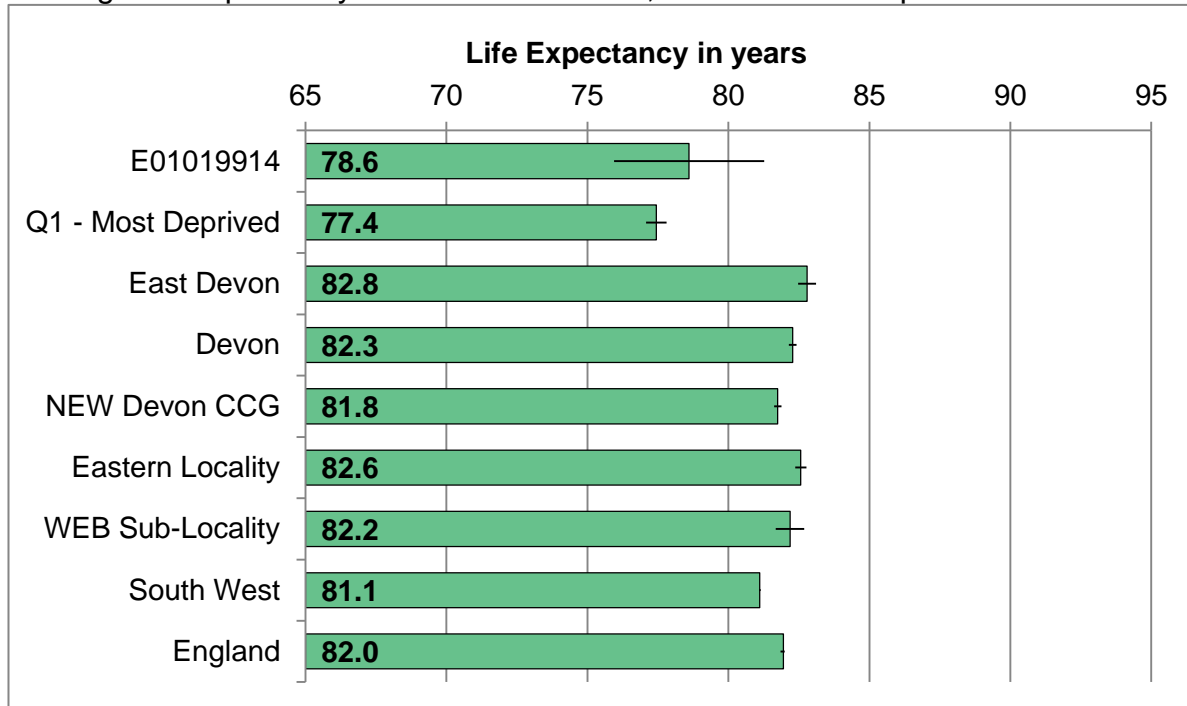
Direct-age standardised rate of alcohol-related hospital admissions.



Area	2008-10	2009-11	2010-12	2011-13
Average per annum	62	64	69	69
LSOA rate	2341.5	2334.2	2394.0	2416.7
Q1 - Most Deprived	2802.4	2961.4	3021.2	3021.1
East Devon	1225.2	1248.3	1278.1	1277.1
Devon	1421.1	1482.8	1550.5	1582.5
NEW Devon CCG	1551.2	1650.6	1719.8	1742.3
Eastern Locality	1323.0	1332.8	1367.3	1378.3
WEB Sub-Locality	1332.0	1332.7	1378.2	1376.7
South West	1605.4	1753.7	1824.8	1830.5
England	1742.8	1895.2	1973.5	1951.1

# LIFE EXPECTANCY AT BIRTH

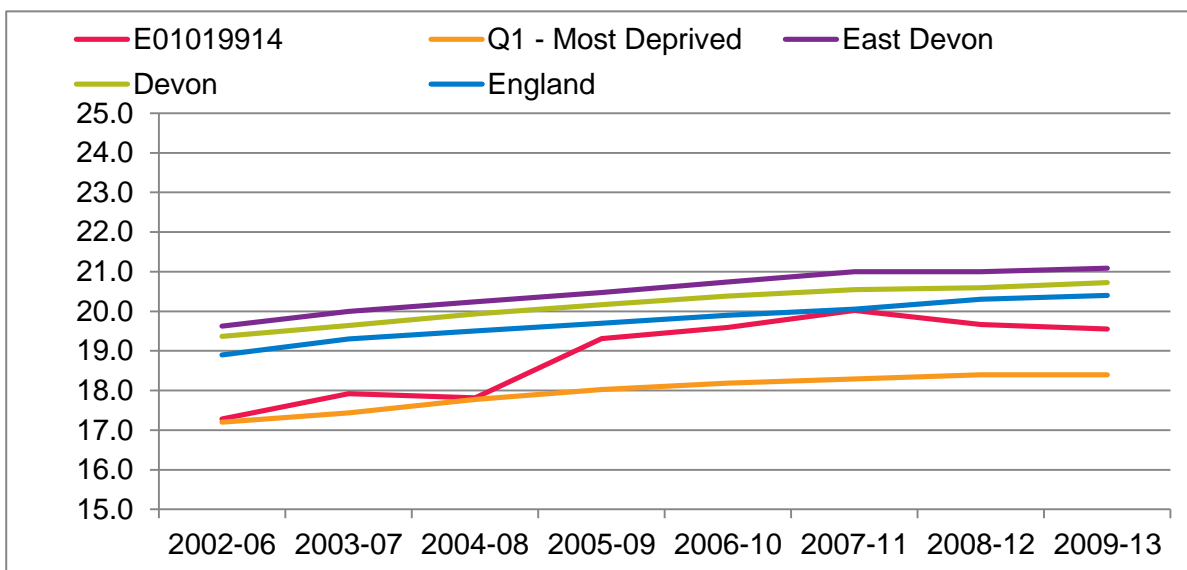
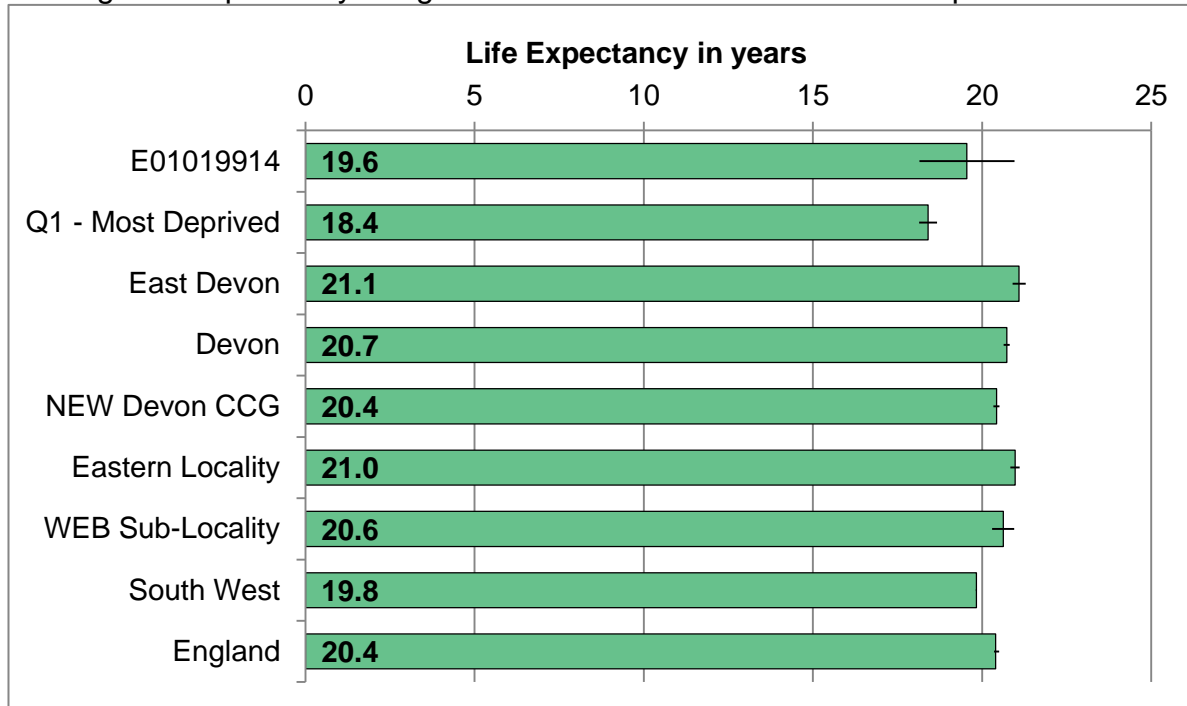
Average life expectancy at birth for residents, combined for all persons.



Area	2004-08	2005-09	2006-10	2007-11	2008-12	2009-13
Deaths per annum	33	29	28	28	31	32
LSOA rate	78.8	80.0	80.1	80.1	78.8	78.6
Q1 - Most Deprived	76.6	76.6	77.0	77.0	77.3	77.4
East Devon	81.9	81.9	82.4	82.8	82.8	82.8
Devon	81.2	81.5	81.8	82.0	82.1	82.3
NEW Devon CCG	80.7	80.9	81.3	81.5	81.6	81.8
Eastern Locality	81.4	81.7	82.1	82.2	82.3	82.6
WEB Sub-Locality	81.3	81.5	82.1	82.6	82.4	82.2
South West	79.7	79.9	80.2	80.5	80.9	81.1
England	80.8	81.0	81.2	81.4	81.8	82.0

# LIFE EXPECTANCY AT AGE 65

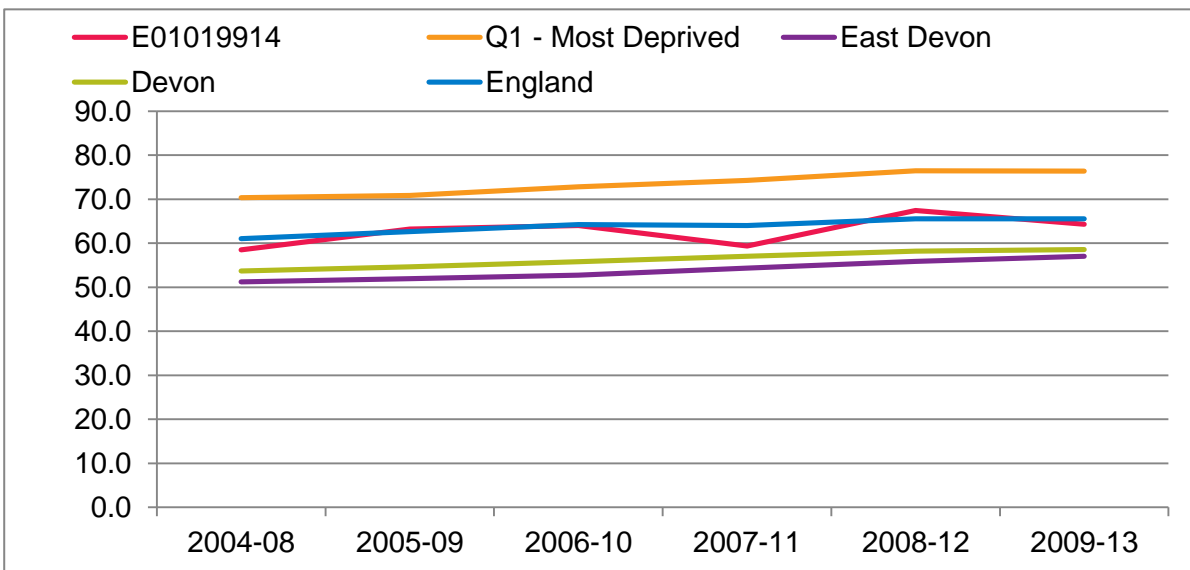
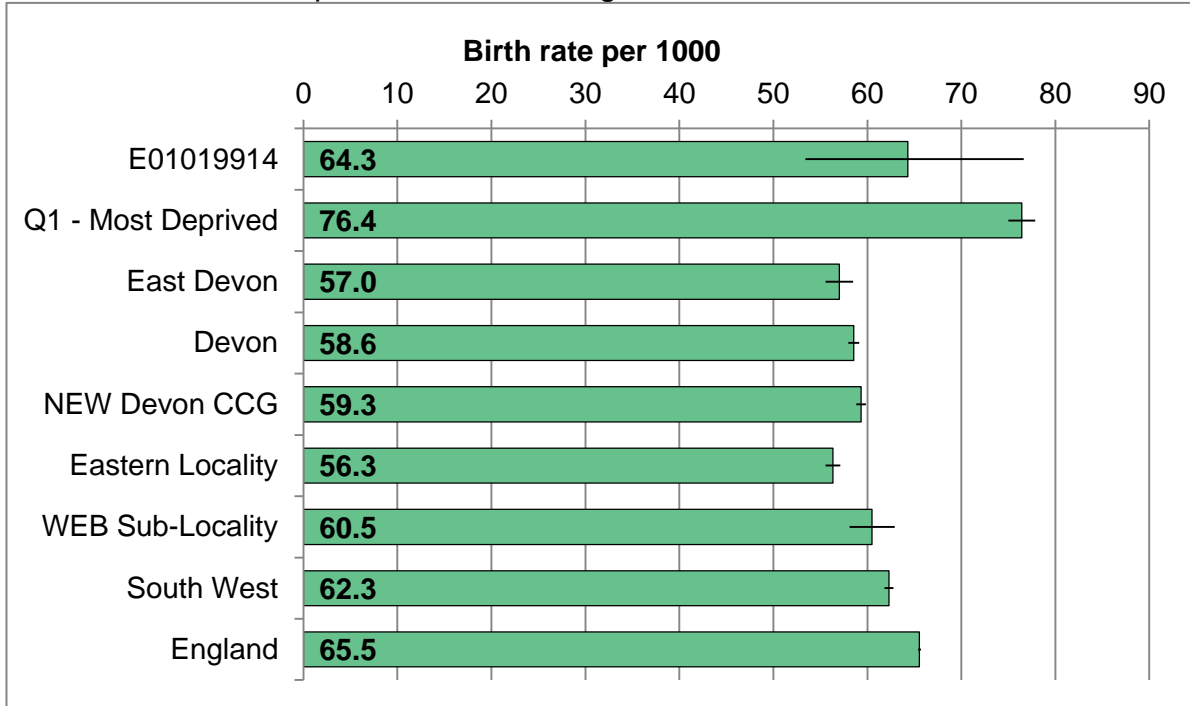
Average life expectancy at age 65 for residents. Combined for all persons.



Area	2004-08	2005-09	2006-10	2007-11	2008-12	2009-13
Deaths per annum	29	24	24	24	26	27
LSOA rate	17.8	19.3	19.6	20.0	19.7	19.6
Q1 - Most Deprived	17.8	18.0	18.2	18.3	18.4	18.4
East Devon	20.2	20.5	20.7	21.0	21.0	21.1
Devon	19.9	20.2	20.4	20.5	20.6	20.7
NEW Devon CCG	19.6	19.8	20.1	20.2	20.3	20.4
Eastern Locality	20.0	20.3	20.5	20.8	20.8	21.0
WEB Sub-Locality	19.7	20.0	20.4	20.7	20.7	20.6
South West	18.8	19.0	19.2	19.4	19.7	19.8
England	19.5	19.7	19.9	20.1	20.3	20.4

# BIRTH RATE

Number of live births per 1,000 females aged 15 to 44.



Area	2004-08	2005-09	2006-10	2007-11	2008-12	2009-13
Births per annum	22	24	24	22	25	23
LSOA rate	58.5	63.2	64.1	59.4	67.5	64.3
Q1 - Most Deprived	70.4	70.9	72.8	74.3	76.4	76.4
East Devon	51.2	51.9	52.7	54.3	55.9	57.0
Devon	53.7	54.6	55.8	57.1	58.2	58.6
NEW Devon CCG	54.3	55.4	56.8	58.1	59.1	59.3
Eastern Locality	52.0	53.1	53.9	55.2	56.2	56.3
WEB Sub-Locality	51.8	54.0	55.8	58.0	59.9	60.5
South West	58.0	59.6	61.0	60.8	62.3	62.3
England	61.0	62.7	64.2	64.0	65.5	65.5

# SOURCES

**Population** **Annual, 2001 to 2012**  
Office for National Statistics Mid Year Population Estimates by LSOA.

**Index of Multiple Deprivation** **2004, 2007 and 2010**  
English Indices of Deprivation. Rank on overall Index of Multiple Deprivation.

**Indices of Deprivation Domains** **2004, 2007 and 2010**  
English Indices of Deprivation. Rank scores across all domains.

**Income Deprivation** **2004, 2007 and 2010**  
English Indices of Deprivation. Income Domain Score (% of population).

**Employment Deprivation** **2004, 2007 and 2010**  
English Indices of Deprivation. Employment Domain Score (% of population).

**Jobseekers Allowance Claimant Rate** **Annual, 2005 to 2014**  
Claimant Count from nomisweb.com. Claimant Rate in June of calendar year.

**Emergency Admissions** **Rolling Annual, 2008-10 to 2011-13**  
Secondary Uses Services. Direct-age standardised rate per 100,000.

**Elective Admissions** **Rolling Annual, 2008-10 to 2011-13**  
Secondary Uses Services. Direct-age standardised rate per 100,000.

**A&E Attendances** **Annual, 2011 to 2013**  
Secondary Uses Services. Direct-age standardised rate per 100,000.

**Accidental Falls Admissions** **Rolling Annual, 2008-10 to 2011-13**  
Secondary Uses Services. Direct-age standardised rate per 100,000.

**Alcohol-Related Admissions** **Rolling Annual, 2008-10 to 2011-13**  
Secondary Uses Services. Direct-age standardised rate per 100,000.

**Life Expectancy at Birth** **Rolling Annual ,2002-06 to 2009-13**  
Primary Care Mortality Database and ONS Annual Mortality Extracts.

**Life Expectancy at Age 65** **Rolling Annual ,2002-06 to 2009-13**  
Primary Care Mortality Database and ONS Annual Mortality Extracts.

**Birth Rate** **Rolling Annual, 2004-08 to 2009-13**  
Office for National Statistics Quarterly Births Extracts. Rate per 1,000.

Last updated: January 2015

Queries to: [publichealthintelligence@devon.gov.uk](mailto:publichealthintelligence@devon.gov.uk)

Next update due: June 2015 (2014 admissions and life expectancy)

**Produced by the Devon Public Health Intelligence Team**