

INTRODUCTION

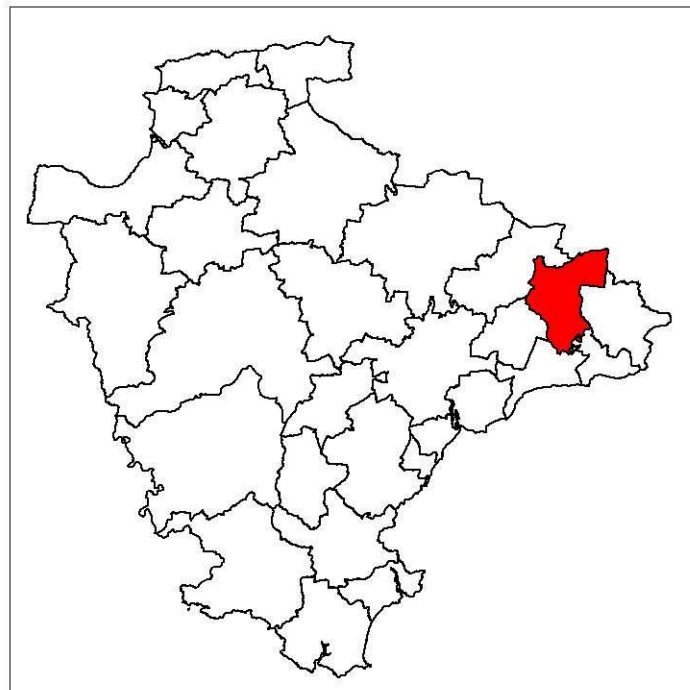
This is the Devon Joint Strategic Needs Assessment for the Honiton area, which also encompasses the surrounding rural parishes.

The aim of the Joint Strategic Needs Assessment is to collaboratively identify current and future health and well being needs and inform future service planning and delivery. The purpose of this town profile is to provide a detailed assessment of current need and service activity at a local level. This profile looks at the health and social care needs of the town and its rural surroundings and other smaller surrounding settlements.

Data for this report was gathered and collated by the NHS Devon information teams, and the Devon County Council Adult and Community Service and Children and Young Peoples Service and Strategic Intelligence teams.

A glossary is available providing detailed definitions and background information for the measures in this report:

http://www.infopoint.devonpct.nhs.uk/Library/Public_Health_Commissioning/JSNA_2009_Glossary_Devon.pdf



FEEDBACK

Any feedback or questions concerning the information in this report would be gratefully received. We would be keen to receive feedback on whether you recognise the community as described in the profile, is any key information is missing or any local priorities or issues you wish to identify.

Please contact d-pc.strategicreview@nhs.net with any comments or questions.

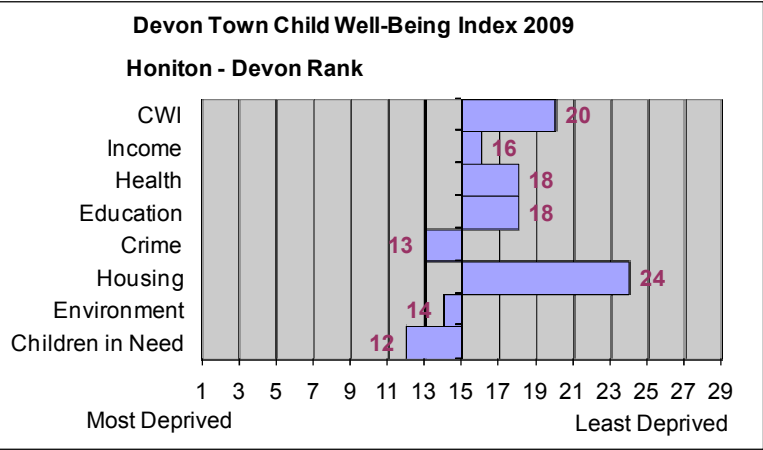
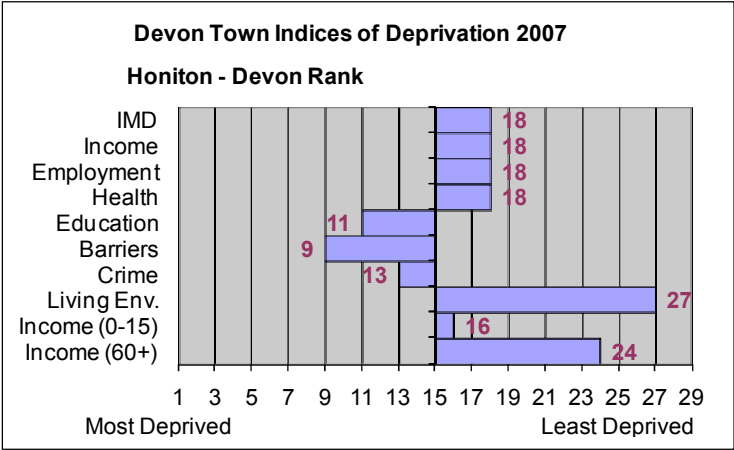
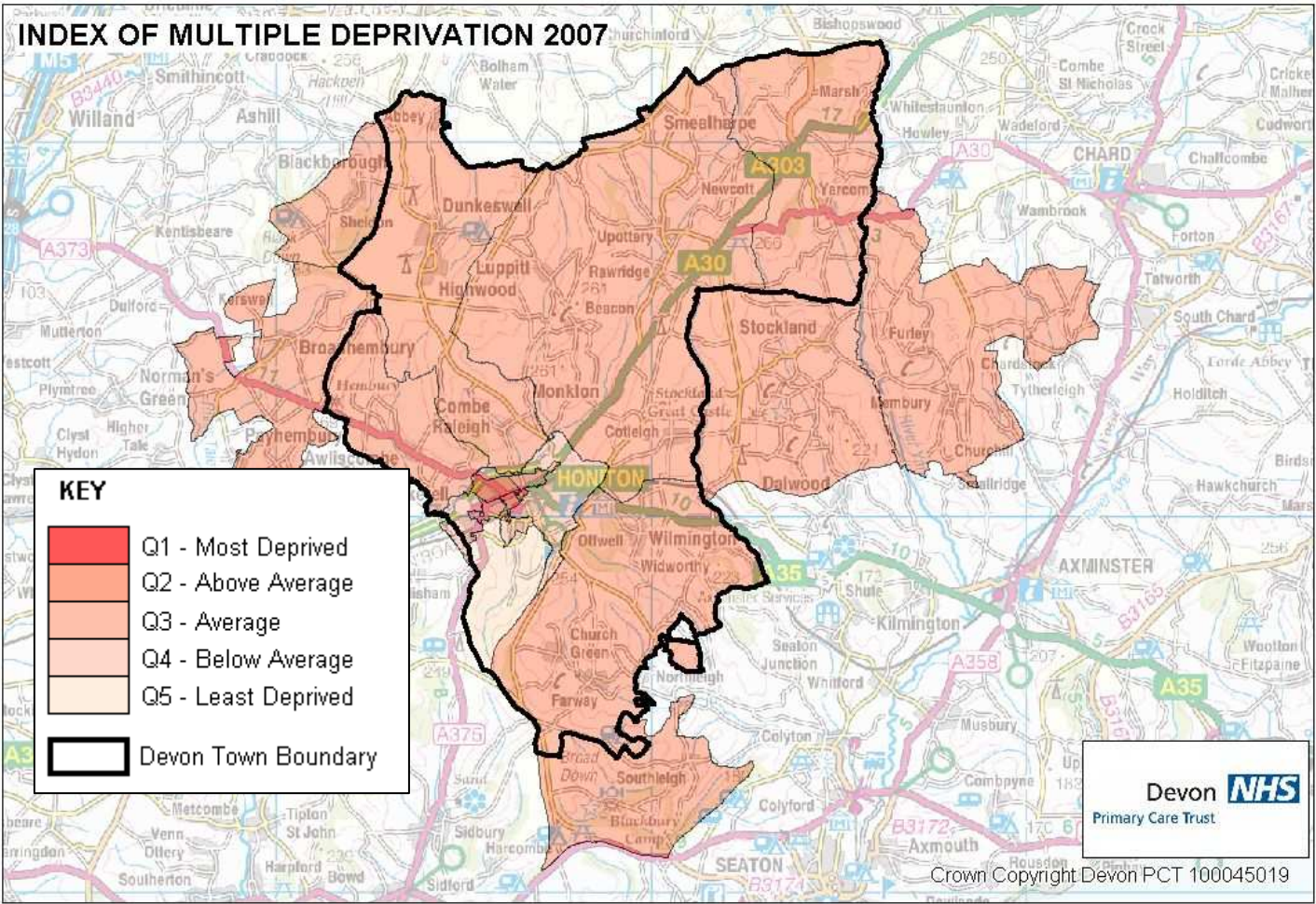
EXECUTIVE SUMMARY

- Overall deprivation is below the Devon and national averages, although the rural hinterland is more deprived than both the urban centre, and averages for rural areas elsewhere in Devon and England.
- The population of Honiton is predicted to decrease by 36 people between 2006 and 2021 – a fall of 0.2%. The largest change is predicted to be in the 70 to 74 age group with an increase of 38.9%
- The birth rate is above the Devon average, and is particularly high in the urban centre.
- Life expectancy is above the Devon average, with longer average life expectancy in the rural hinterland.
- The youth offending rate in the area is above the Devon average, although there are fewer persistent offenders.
- GCSE performance is below the Devon average.
- The rate of referrals for older people aged 65+ into Adult and Community Services in Honiton is in line with the Devon average
- The estimated prevalence of Dementia in the 65 and over population in Honiton is 7.61%
- The rate of Safeguarding alerts for vulnerable adults in East Devon is comparable with the Devon average
- The level of A&E attendances is the highest in Devon, which is partly due to the presence of a large Minor Injury Unit. The rate of non-elective admissions to hospital (emergencies, maternities and transfers) is also well above the Devon average.
- The rate of alcohol-related admissions is in line the Devon average.
- Rates of teen conception are below the Devon average in the urban centre.

DEPRIVATION

The main source of information on deprivation is the 2007 Indices of Deprivation, which combine data on different social issues to produce an overall deprivation score for local areas, the Index of Multiple Deprivation. In the Honiton town area levels of deprivation are typically average, although areas on the outskirts of the town are typically much less deprived.

A breakdown of the individual domains from the Indices of Deprivation, reveal particular issues around barriers to housing and services domain (a measure of the distance to key services and housing availability) and education and crime. A separate Child Wellbeing Index was released in 2009, which reveals that whilst Honiton is less deprived than the Devon average, although the area was above average in relation to the domains for children in need, crime and environment.

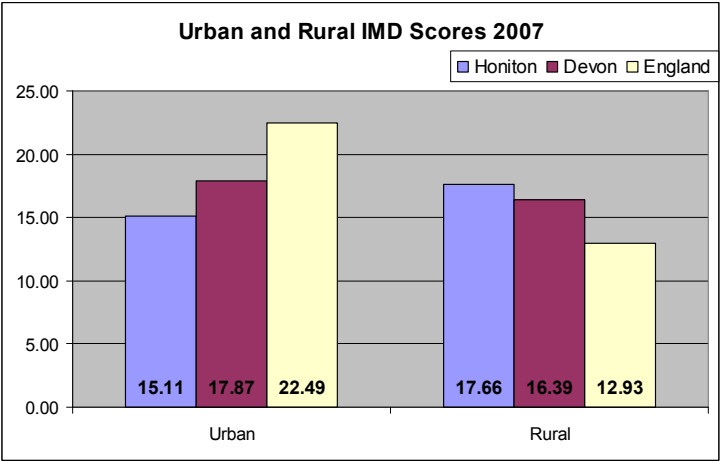


For full description of domains please view the glossary

DEPRIVATION IN URBAN AND RURAL AREAS

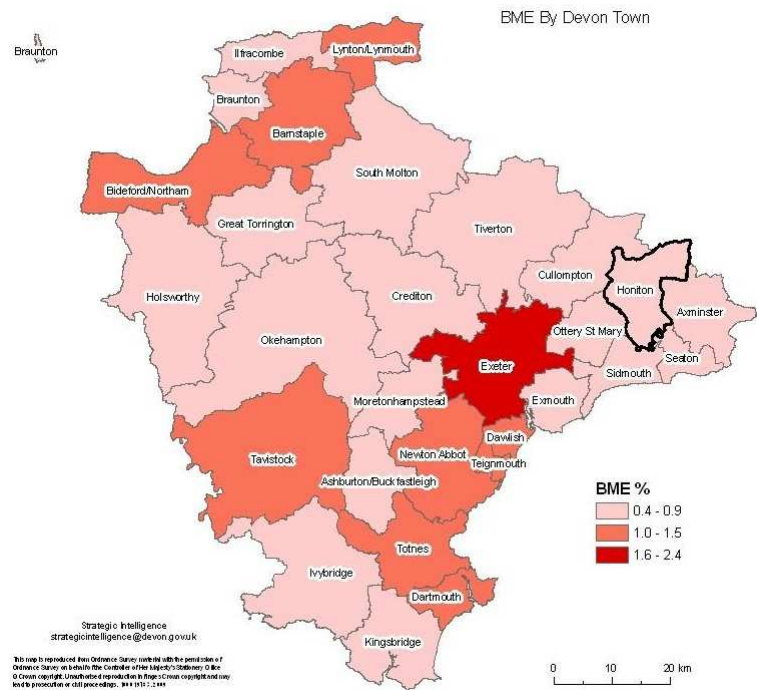
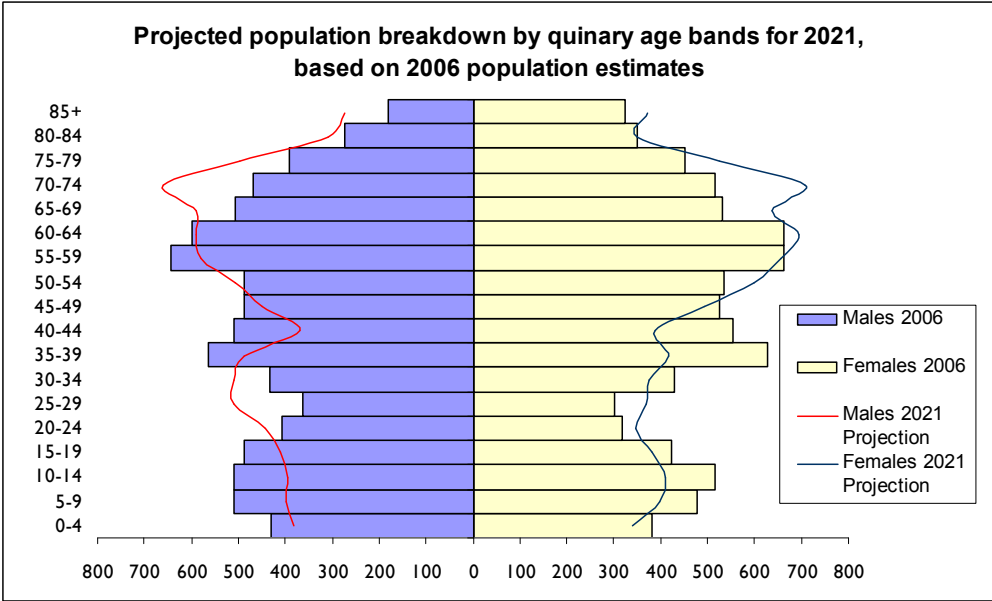
The following chart compares index of multiple deprivation scores for the urban area of Honiton with the surrounding rural hinterland, along with average urban and rural Index of Multiple Deprivation scores for Devon and England as a whole.

This reveals that in general the urban centre of Honiton is less deprived than the surrounding rural area. Honiton urban centre is less deprived than the Devon and national averages for urban areas, whereas the surrounding rural area is more deprived than the Devon and national averages for rural areas.



POPULATION

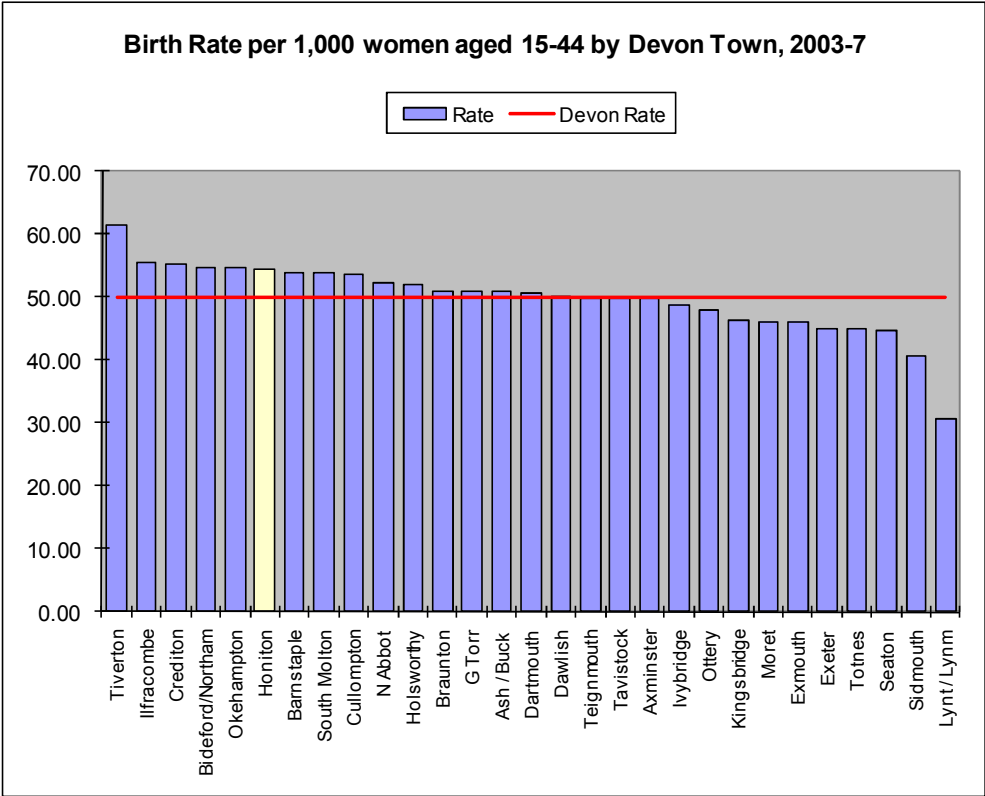
The population of Honiton is predicted to decrease by 36 people between 2006 and 2021 – a fall of 0.2%. The total number in the younger age groups (from 0 to 19) is predicted to decrease by 623 to 3,110 – a fall of 16.7%. The 20 to 44 year age band is also predicted to see a decrease, in this case of 305 to 4,209 or 6.8%. The 45 to 64 age group should see a decrease of 33 people (0.7%) to 4,567. The older age groups (65 years and older) are due to see an increase in number of 925. This equates to a 23.2% increase over the 15 years that these projections cover and will take the population in this group up to 4,919. The largest change is predicted to be in the 70 to 74 age group with an increase of 38.9%.



The proportion of Honiton's population from BME communities based on the 2001 census is 0.8%. This is comparable to the overall Devon BME of 1.1%.

BIRTHS

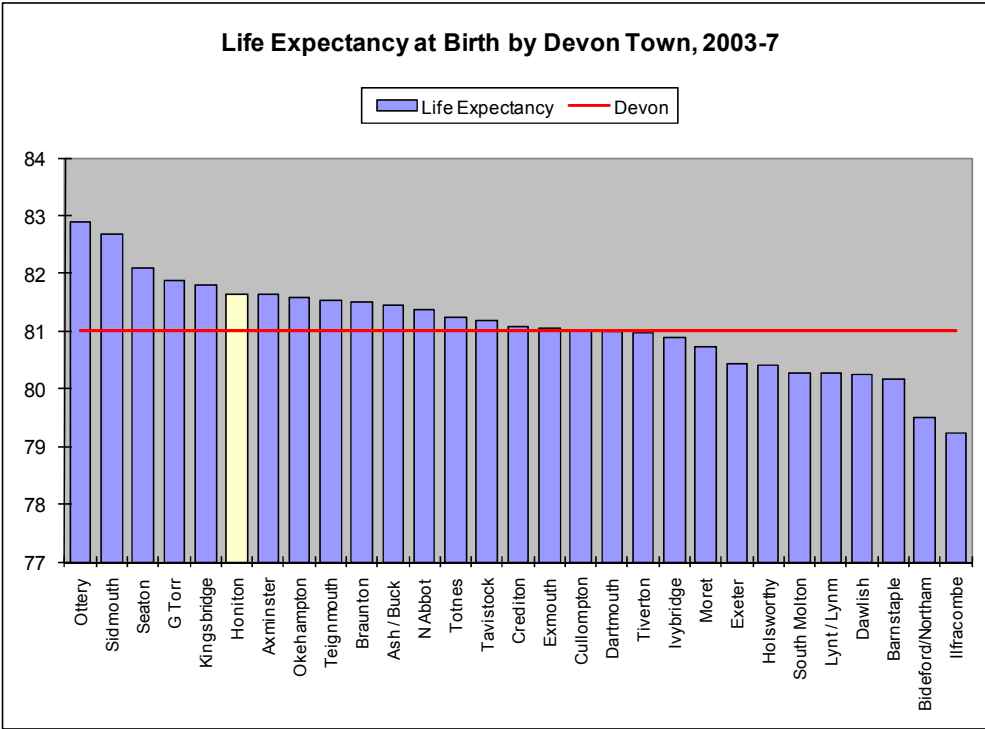
The birth rate in the Honiton area is one of highest in Devon, and is above the Devon average. Birth rates in the town are notably higher than in the hinterland.



Area	Average births per year	Birth Rate
Honiton Centre	119	56.96
Honiton Hinterland	39	48.25
Honiton Town Area	157	54.55
East Devon District	1,005	46.98
Eastern Locality	2,981	48.14
Devon	6,721	50.02
Devon Urban	4,797	50.35
Devon Rural	1,925	49.24

LIFE EXPECTANCY

Life expectancy in the Honiton area is above average for Devon, with longer average life expectancy seen in the rural hinterland.

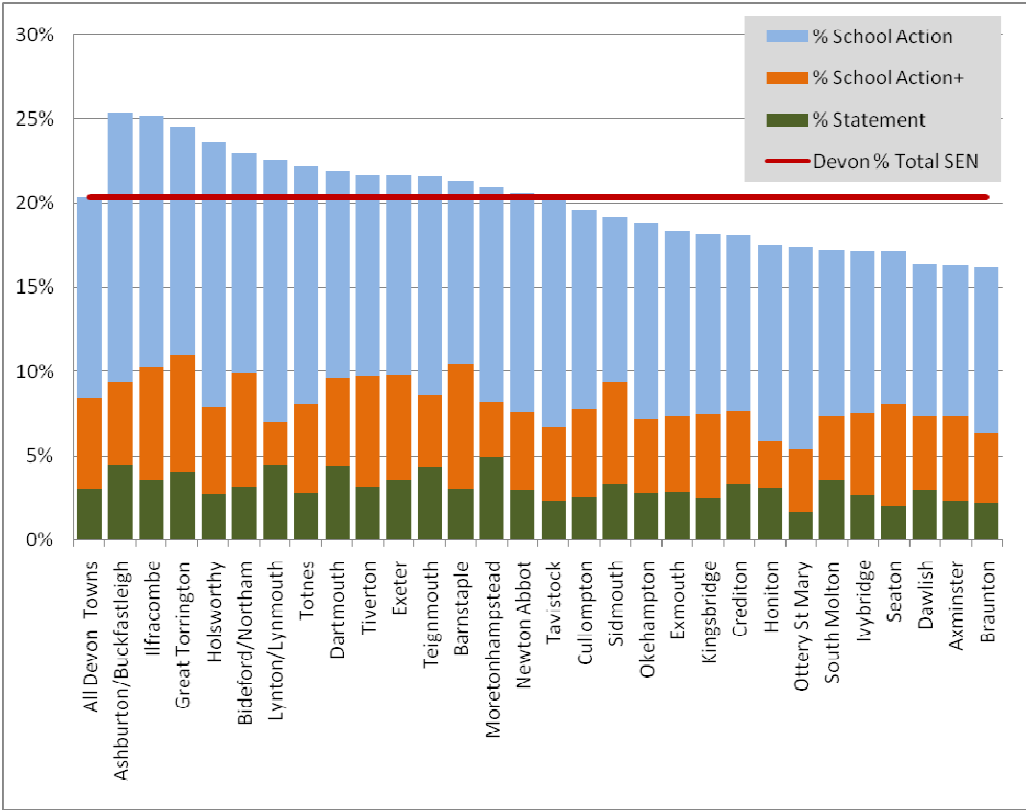


Area	Female	Male	Total
Honiton Centre	82.7	79.4	81.1
Honiton Hinterland	85.3	81.1	83.2
Honiton Town Area	83.3	79.9	81.6
East Devon District	83.4	79.9	81.8
Eastern Locality	83.0	79.1	81.1
Devon	83.0	78.9	81.0
Devon Urban	82.5	78.4	80.5
Devon Rural	84.0	80.0	82.0

CHILDREN AND YOUNG PEOPLE

Honiton Town Area has below average numbers of those with Special Educational Needs; below average GCSE performance; a higher than average youth offending rate; and an average proportion of children and young people from black and ethnic minority groups.

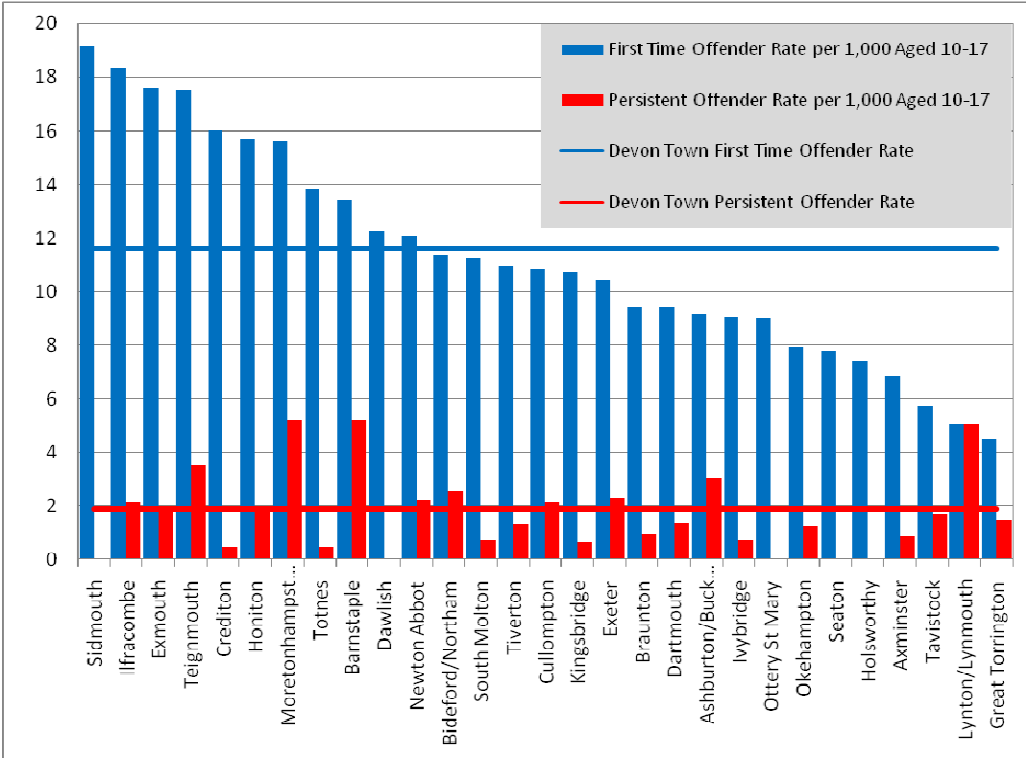
SPECIAL EDUCATIONAL NEEDS (2007/08)



This graph represents the percentage of young people with SEN attending a DCC school in 07/08 by their town of residence. The national average for the proportion of pupils identified with SEN (i.e. Statemented, School Action Plus and School Action combined) is approximately 20%. We want children and young people to access services and provision within their Local Learning Communities wherever possible. Some children with complex needs will require access to specialist support in additionally resourced provision or special schools. Where there are significant variations it reflects the level of support needed within the community.

Data Source: DCSF School Census (Oct 07, Jan 08 and May 08)

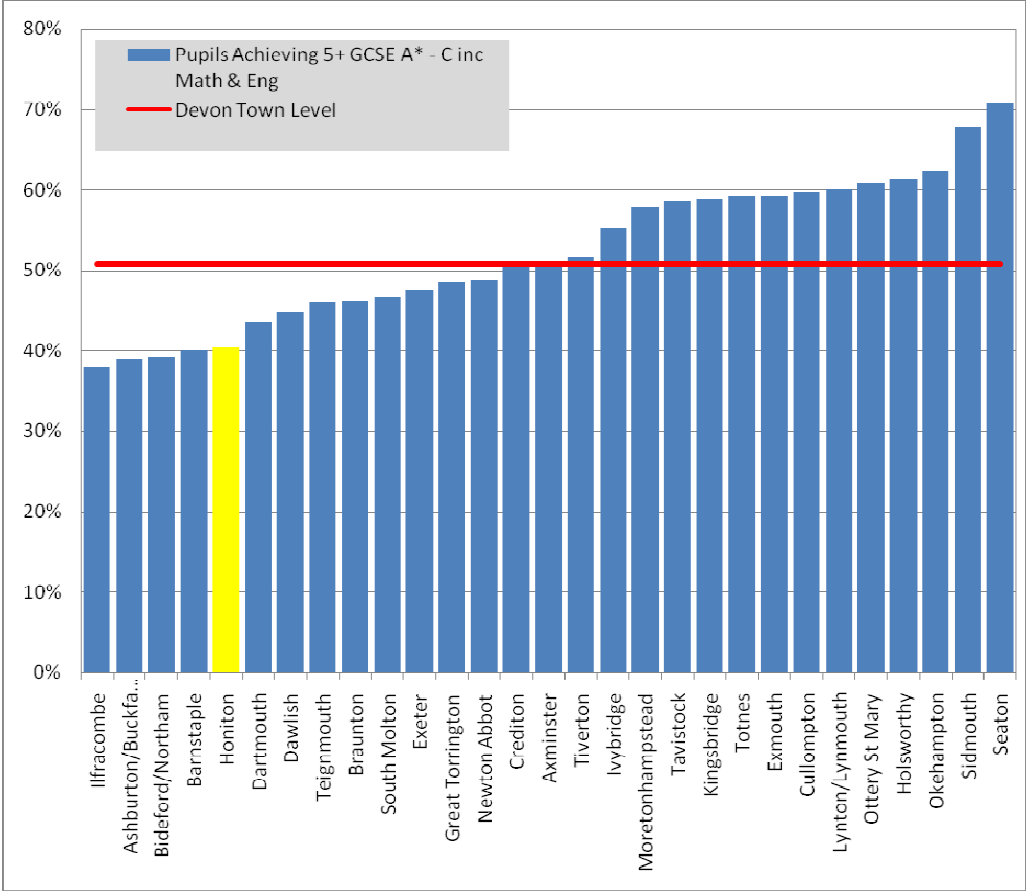
YOUTH OFFENDING (2008)



Devon's First Time Entrants (FTEs) figure has been below the regional and national average since 2004/5, and continues to fall - current projections for the financial year 2009/10 are that the FTE rate will drop by over a third, compared to the baseline year of 2007/8. Within Devon, such small numbers of FTEs can cause significant statistical variations from one year to the next, particularly in the smaller towns and communities. In general, around two thirds of FTEs do not re-offend, but the pattern of those who re-offend more persistently (Persistent Youth Offenders - PYOs) is even more liable to fluctuation outside of the four largest communities (Barnstaple, Exeter, Exmouth and Newton Abbot). Preventative work by the Youth Offending Service and Children's Trust is increasingly focused, therefore, on the towns

where there is a longer term pattern of FTEs and PYOs above the Devon average. Data Source: Devon Youth Offending Team 2009

GCSE PERFORMANCE (2008)



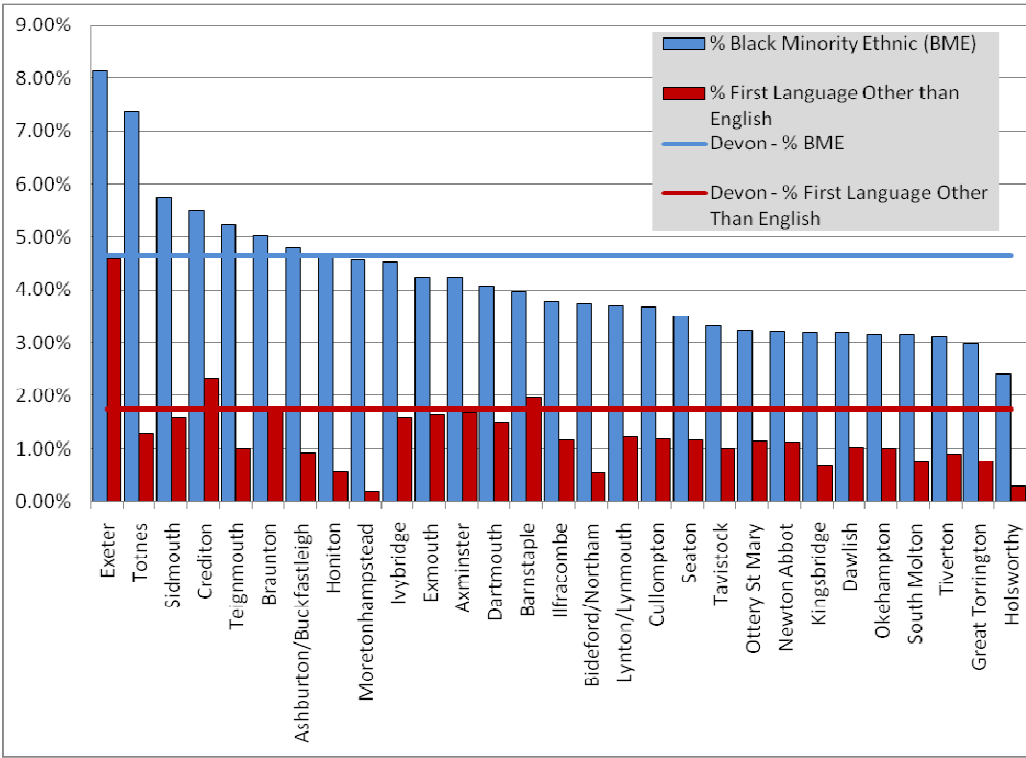
The graph illustrates GCSE performance in 2008 for pupils in Devon Maintained Schools by Town of residence.

Devon pupils' achievement at GCSE level is slightly above the National average (49.5%) but there still too many pupils not gaining 5 or more GCSEs including Maths and English.

The Local Authority has established a 'Narrowing the Gap' Programme to improve the attainment of the lowest 20% of achievers, and a 'Raising the Bar' programme to stretch the most able.

Data Source: Devon Learning and Development Partnership

ETHNICITY AND FIRST LANGUAGE (2007/08)



This graph represents the percentage of young people with a first language other than English who were attending a DCC school in 07/08 by their town of residence. In this time period there were 4,440 pupils from a minority ethnic background in Devon schools (4.65% of the total school population) and of these 1,731 have English as an additional language.

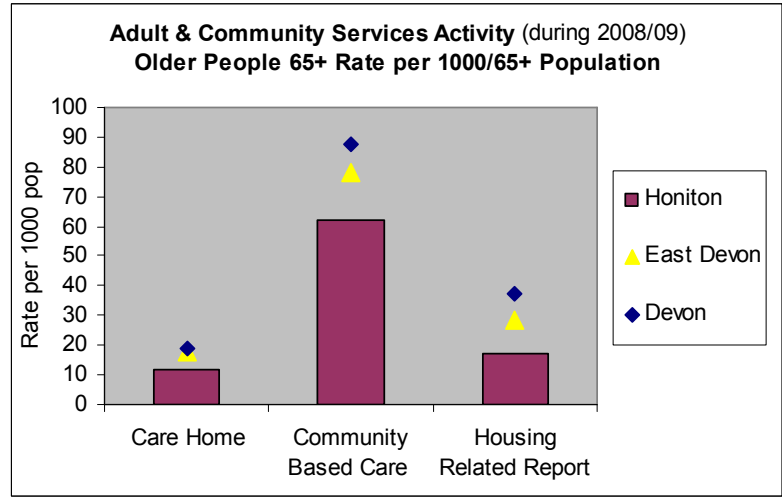
There are over 60 different languages spoken by children and young people in Devon schools the largest minority language groups being Polish (252) and German (88).

There are few schools without minority ethnic pupils and an increase in those schools with over 6% Black Minority and Ethnic pupils on roll. Currently, the largest ethnic group are Polish families located

across the county.
Data Source: DCSF School Census (Oct 07, Jan 08 and May 08)

ADULT AND COMMUNITY SERVICES

Older People 65+



This table illustrates that service activity for older people aged 65+ in Honiton is under represented when compared to the Devon average for the proportion of people based in Care Homes and the proportion receiving Community Based Care and Housing Related Support.

The rate of referrals for older people aged 65+ into Adult and Community Services in Honiton is 134.4 (per 1000 65+ population). This is comparable to the overall Devon referral rate. The proportion of referrals for older people aged 65+ in Honiton dealt with at point of contact and those sent on for further assessment is in line with the overall Devon average of 14% and 86% respectively.

There is an over representation in the number of referrals from Primary Health / Community Health for clients aged 65+ in Honiton. The rate of older people

aged 65+ in Honiton receiving assessments is 50.3 (per 1000 65+ population) and 56.1 for reviews, there is an under representation in reviews when compared to the Devon average.

13% of adult clients in East Devon who were assessed on Falls risk groups based on new enquiries received for the Home Improvement Agency were identified as in the High risk group, compared to 15% for the Devon average.

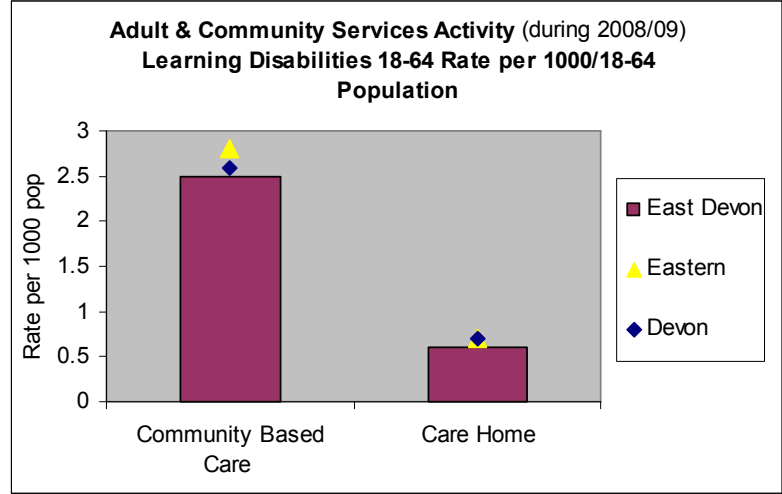
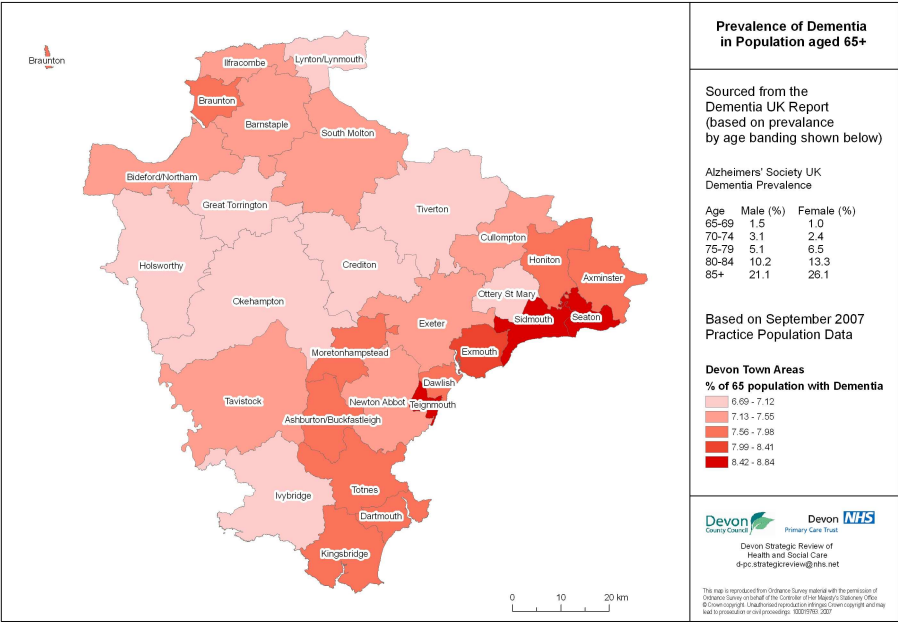
Mental Health and Learning Disabilities

Applying the nationally accepted prevalence rates for Dementia to the population in Honiton shows that there are an estimated 316 people in the area with Dementia. This gives an overall prevalence rate in the 65 and over population of 7.61%.

The table below presents people in East Devon aged 18-64 predicted to have a mental health problem, projected to 2025

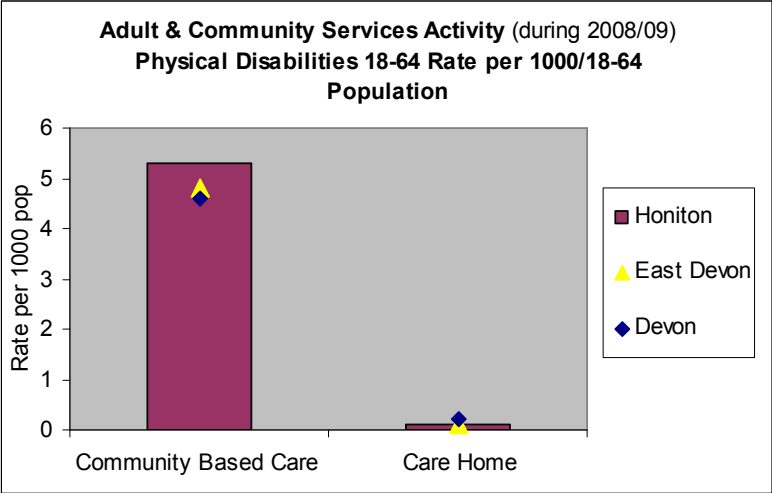
	2008	2025	% Change
Depression	1,880	2,087	11%
Neurotic disorder	12,148	13,484	11%
Personality disorder	3,224	3,580	11%
Psychotic disorder	404	449	11%

Data Source: PANSI



In East Devon the proportion of people with learning disabilities aged 18-64 receiving Community Based Care and the proportion of people based in Care Homes is comparable to the overall Devon average.

Physical Disabilities 18-64



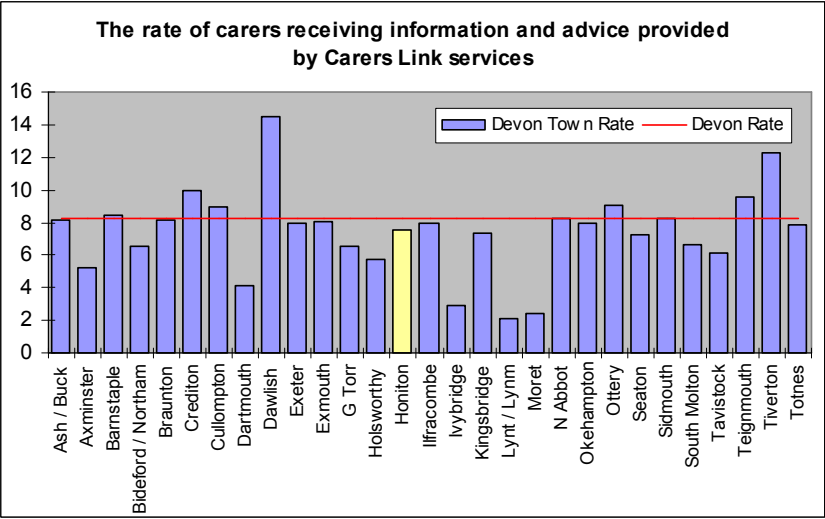
Honiton is comparable to the overall Devon average for the number of people with physical disabilities aged 18-64 receiving Community Based Care and the number based in a Care Home.

There is an over representation in Honiton in the number of referrals made by self/carer for people aged 18-64 into Adult and Community Services.

The rate of people with physical disabilities aged 18-64 in Honiton receiving assessments is 3.2 (per 1000 18-64 population) and 2.5 for reviews, these rates are both comparable to the Devon average.

The rate of Safeguarding alerts in East Devon is 2.1 (per 1000 18+ population) and is comparable to the Devon average.

Carers

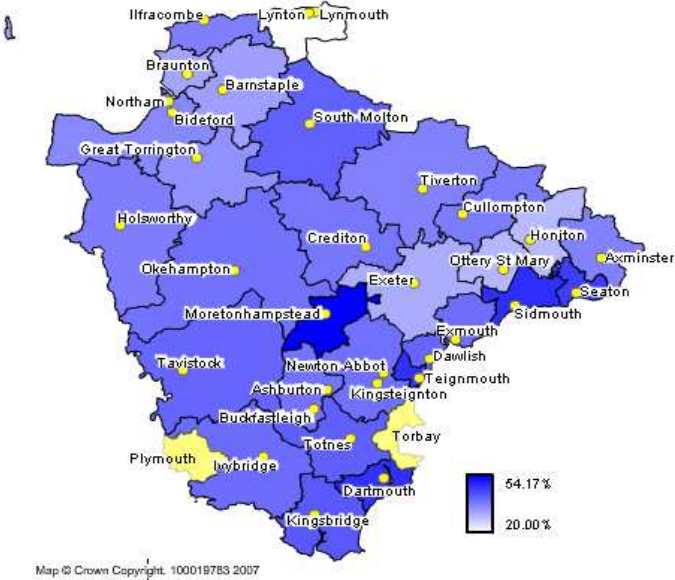
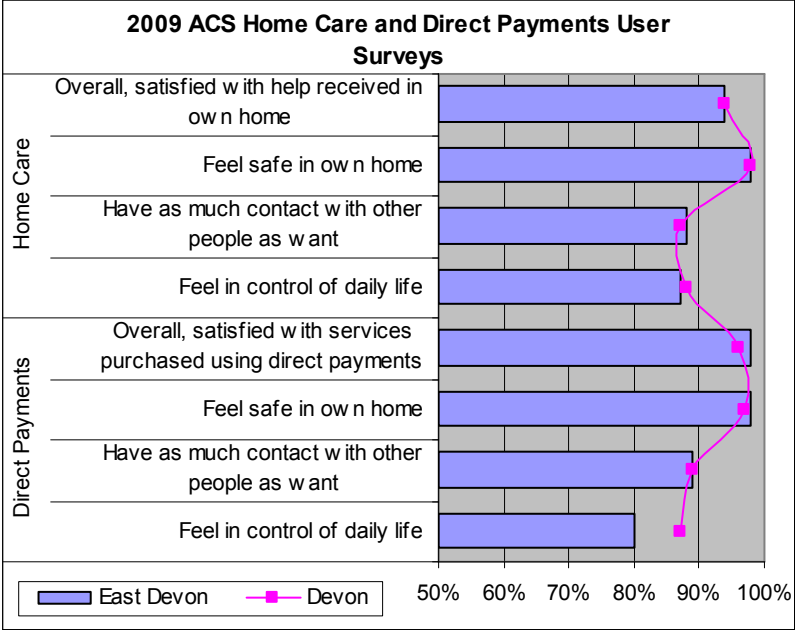


The rate of Carers assessments and reviews in Honiton is 7.5 (per 1000 18+ population) and is comparable with the Devon average.

The table opposite illustrates that the rate of carers receiving Information and advice provided by Carers Link services in Honiton is comparable to the Devon average. A large proportion of this is carers of people with physical disabilities and mental health problems

Respect and consideration
Older people are able to get the support needed to continue to live at home

User Experience / Feedback

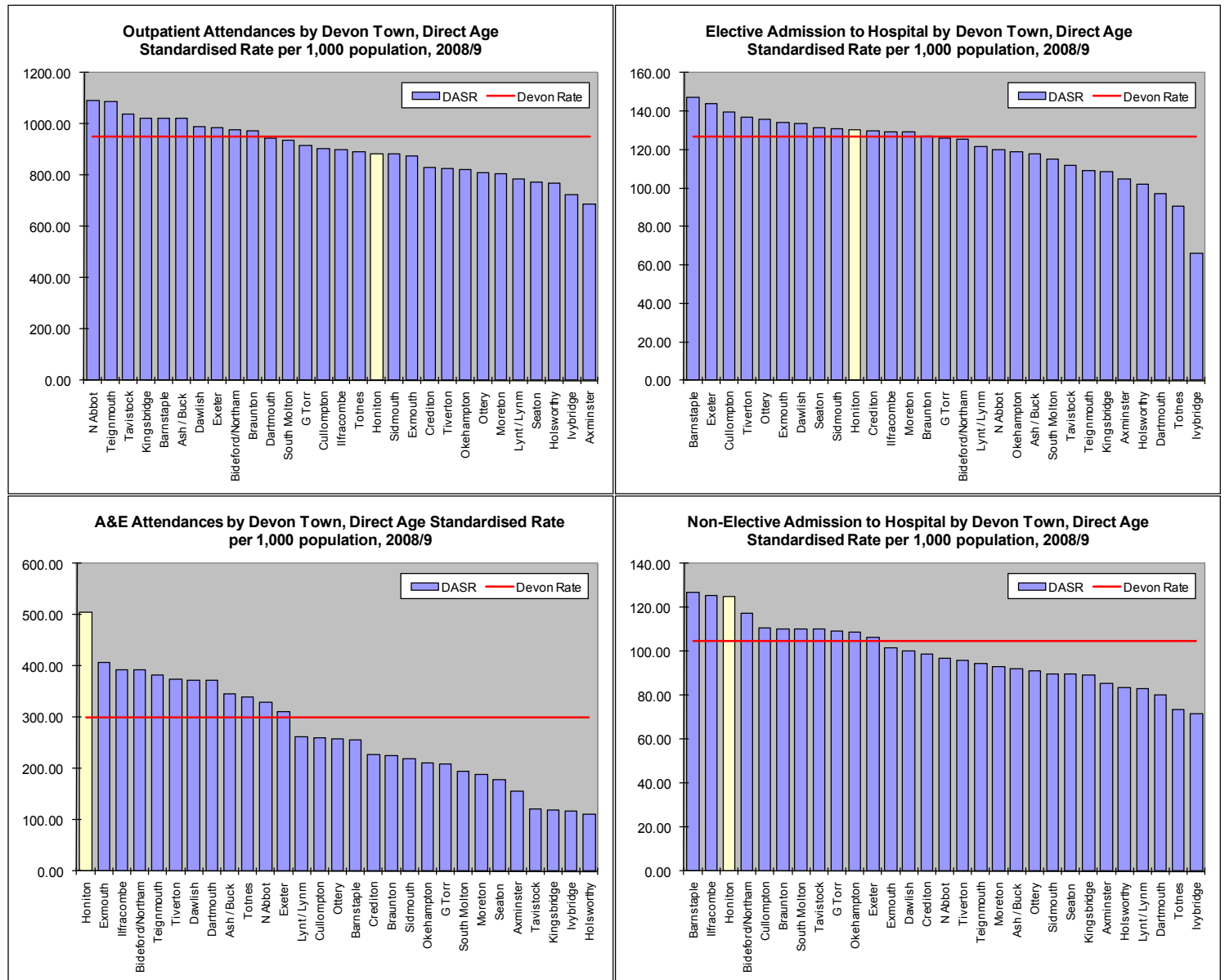


Results of the 2008 Place Survey reveal that 29.2% of Honiton residents who responded to the survey felt that older people are able to get the support needed to continue to live at home compared to the Devon average of 36%.

The 2009 ACS User Survey results for Direct Payments recipients indicate that respondents in East Devon feel less in control of daily life than in Devon overall. However, low response rates in some districts can skew survey results.

HOSPITAL ACTIVITY

The rate of outpatient attendances in the Honiton town area is below the Devon average, although the rate of elective admissions to hospital is marginally above the Devon average. The rate of Accident and Emergency attendances is the highest in Devon, possibly on account of a prominent Minor Injury Unit in the town, and non-elective admissions to hospital, which cover emergencies, maternities and transfers, are well above the Devon average.

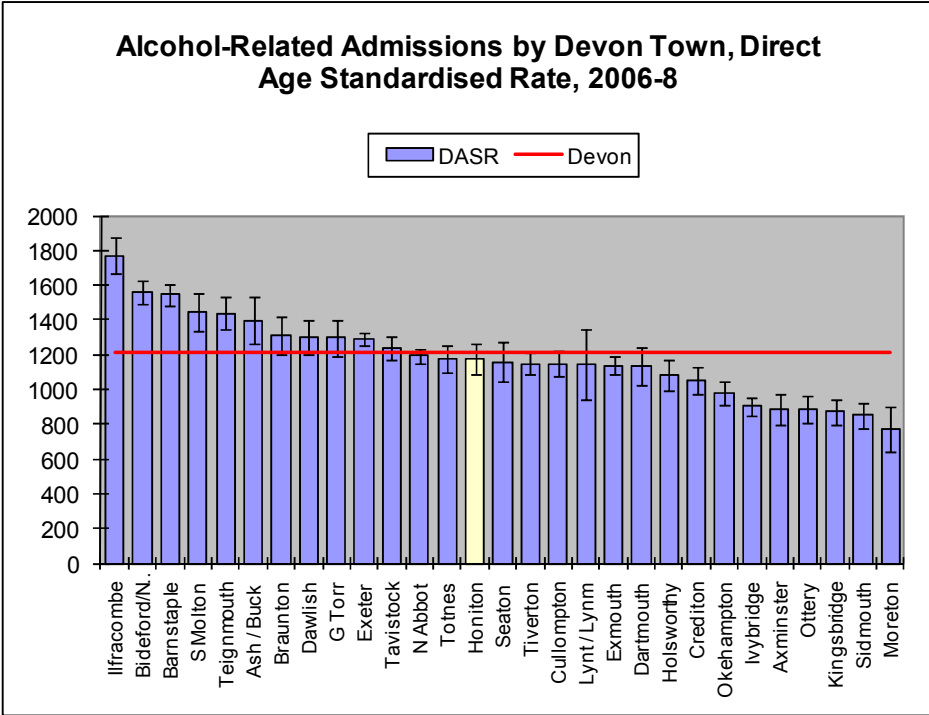


Hospital Activity, Direct Age Standardised Rates by Activity Type, 2008/9

Area	A&E Attends	Outpatient Attends	Elective Admissions	Non-Elective Admissions
Honiton Centre	568.0	906.0	137.3	133.7
Honiton Hinterland	356.5	837.8	114.4	105.2
Honiton Town Area	504.6	883.8	130.1	125.0
East Devon District	324.8	842.7	130.6	98.4
Eastern Locality	313.2	889.5	134.5	101.9
Devon	300.3	951.4	126.9	104.8

PUBLIC HEALTH – ALCOHOL-RELATED ADMISSIONS

Alcohol-Related admissions include those where acute, chronic and mental conditions are known to relate either fully or partially to alcohol use. Further details on how these figures are derived can be found in the glossary. The Honiton area has a slightly lower rate of alcohol-related admissions than Devon but a higher rate in comparison to the locality and district. Admission rates for both urban and rural areas are slightly below the equivalent Devon averages.



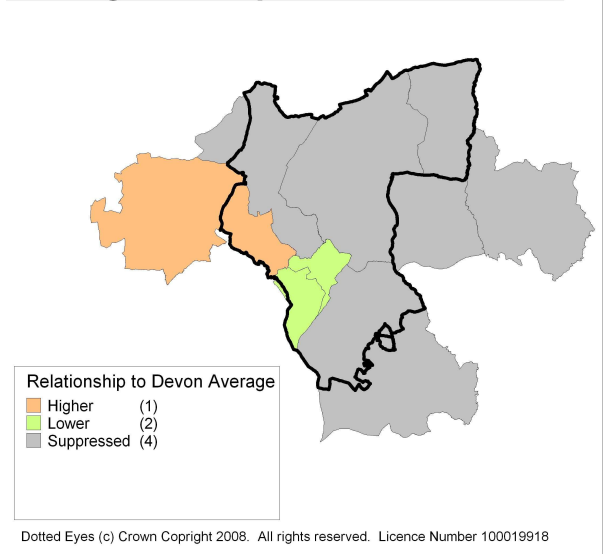
Area	Admissions per year	DASR* per 100k
Honiton Centre	195	1246.6
Honiton Hinterland	93	980.9
Honiton Town Area	288	1172.2
East Devon District	2,163	1043.8
Eastern Locality	5,082	1159.1
Devon	12,742	1215.3
Devon Urban	8,877	1319.4
Devon Rural	3,863	1012.1

* Direct age standardised rate, see glossary

PUBLIC HEALTH TEEN CONCEPTIONS

Levels of conceptions amongst females aged below 18 were lower than the Devon average in the two urban wards in Honiton. Rates were higher in the neighbouring ward of Tale Vale. The rates in surrounding rural wards were suppressed due to the small numbers involved.

Teenage Conception Rates, 2004-6



PUBLIC HEALTH DEATH RATES 2003-7

The table below presents mortality or death rates for the Honiton town area compared with Devon. This highlights that whilst death rates in Honiton are typically below the Devon average, the difference is not statistically significant.

Measure	Average deaths per year	DASR	Devon DASR	Relationship to Average
All Causes	198	507.8	533.3	N.S.
All Causes, Female	101	434.7	448.3	N.S.
All Causes, Male	97	599.6	640.6	N.S.
All Causes, under 75	53	243.2	254.4	N.S.
Cancer	53	152.0	163.9	N.S.
Cancer, under 75	22	98.1	105.5	N.S.
Circulatory	81	182.5	183.8	N.S.
Circulatory, under 75	14	60.7	65.8	N.S.

N.S. = Not statistically significant. For more information on definitions and measures, see glossary