

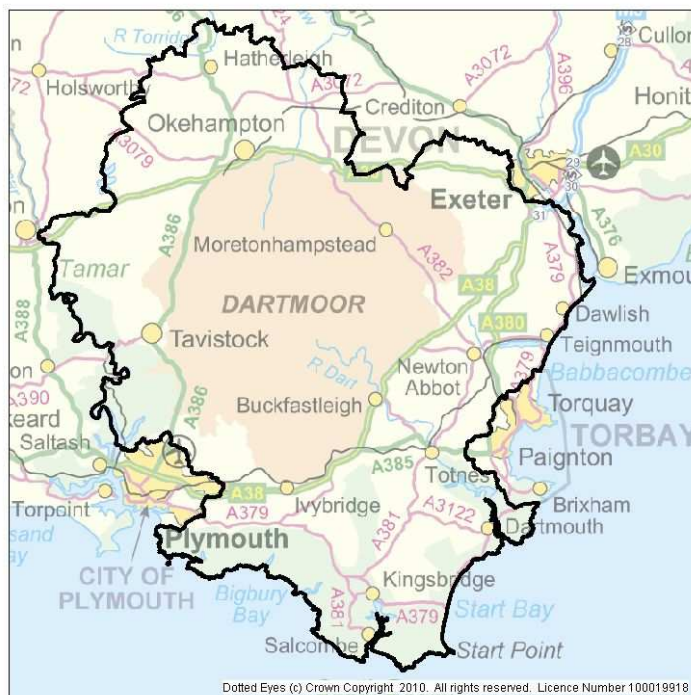
## INTRODUCTION

This is the Devon Joint Strategic Needs Assessment for the Southern locality area, based on the district council localities and covering the districts of Teignbridge, South Hams and West Devon.

The aim of the Joint Strategic Needs Assessment is to collaboratively identify current and future health and well being needs and inform future service planning and delivery. The purpose of this town profile is to provide a detailed assessment of current need and service activity at a local level. This profile looks at the health and social care needs of the town and its rural surroundings and other smaller surrounding settlements.

Data for this report was gathered and collated by the NHS Devon information teams, and the Devon County Council Adult and Community Service and Children and Young Peoples Service and Strategic Intelligence teams.

A glossary is available providing detailed definitions and background information for the measures in this report:



[http://www.infopoint.devonpct.nhs.uk/Library/Public\\_Health\\_Commissioning/JSNA\\_2009\\_Glossary\\_Devon.pdf](http://www.infopoint.devonpct.nhs.uk/Library/Public_Health_Commissioning/JSNA_2009_Glossary_Devon.pdf)

## FEEDBACK

Any feedback or questions concerning the information in this report would be gratefully received. We would be keen to receive feedback on whether you recognise the community as described in the profile, is any key information is missing or any local priorities or issues you wish to identify.

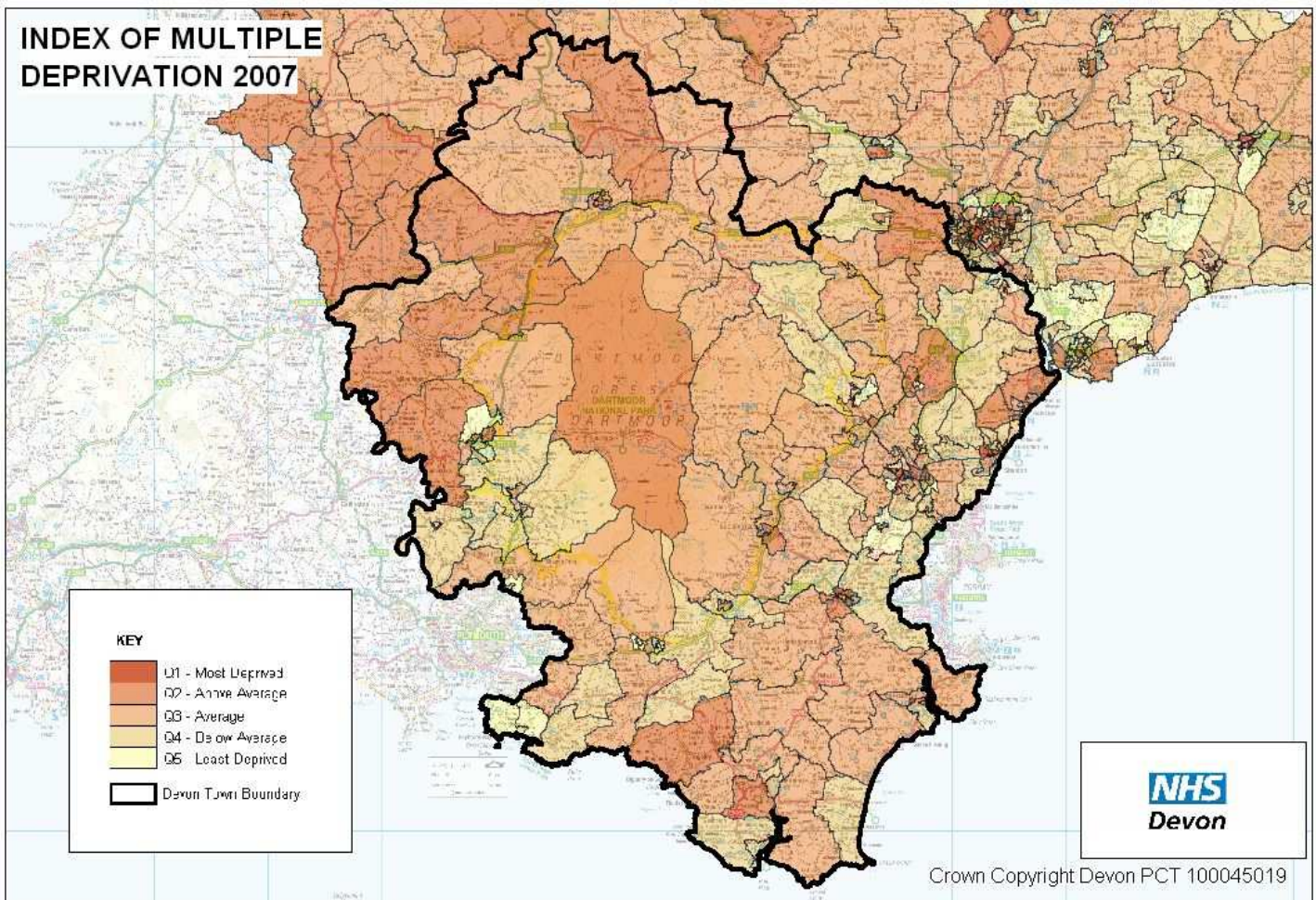
Please contact [d-pc.strategicreview@nhs.net](mailto:d-pc.strategicreview@nhs.net) with any comments or questions.

## EXECUTIVE SUMMARY

- The Southern locality has below average levels of deprivation overall, although there were small pockets of deprivation in some areas. Rural areas are typically slightly more deprived than rural areas in the locality.
- The population of the Southern locality is predicted to increase by 27,286 people between 2006 and 2021 – a rise of 10.9%. The largest change is predicted to be in the 70 to 74 age group with an increase of 58.4%
- The birth rate is slightly above the Devon average, with the highest rates seen in Okehampton.
- Life expectancy is above the Devon average, with the longest average life expectancy seen in Kingsbridge.
- Ashburton/Buckfastleigh, Totnes, Dartmouth and Teignmouth all had levels of children with Special Educational Needs above the Devon average.
- GCSE performance was below the Devon average in Ashburton/Buckfastleigh, Dartmouth, Teignmouth and Dawlish.
- The rate of referrals for older people aged 65+ into Adult and Community Services in the Southern locality is in line with the Devon average
- The estimated prevalence of Dementia in the 65 and over population in the Southern locality is 7.54%
- The rate of Safeguarding alerts for vulnerable adults in the Southern locality is in line with the Devon average
- The rate of A&E attendances and admissions to hospital is below the Devon average.
- The rate of alcohol-related hospital admissions was significantly below the Devon average, although higher rates were seen in Teignmouth, Ashburton/Buckfastleigh and Dawlish.
- Teen conception rates were highest in parts of Newton Abbot and Teignmouth.
- Death rates were consistently below the Devon average.

# DEPRIVATION

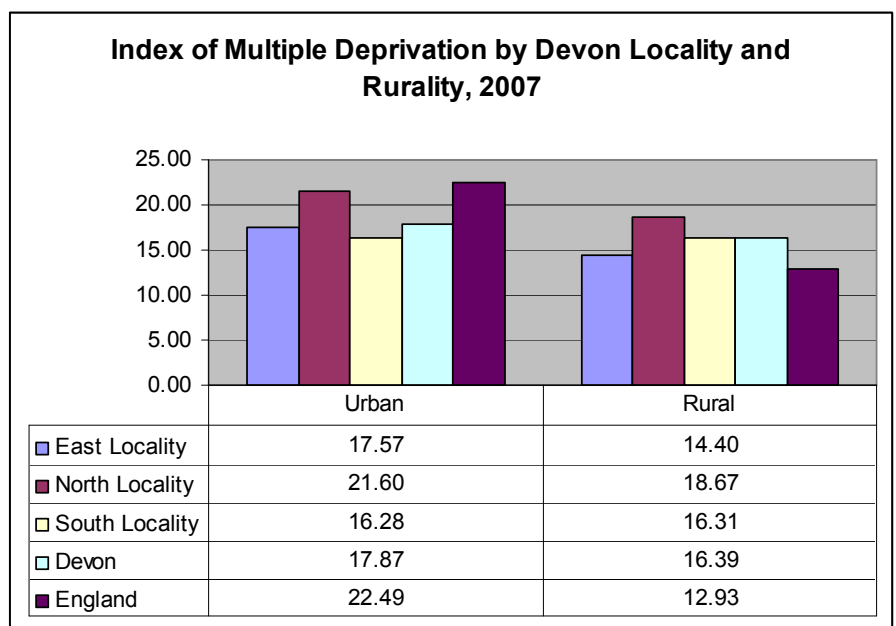
The main source of information on deprivation is the 2007 Indices of Deprivation, which combine data on different social issues to produce an overall deprivation score for local areas, known as the Index of Multiple Deprivation. In the Southern locality the most deprived areas are in parts of Teignmouth, Newton Abbot and Dartmouth. The lowest levels of deprivation are seen around Ivybridge, areas South West of Exeter and in areas between Newton Abbot and Totnes.



## DEPRIVATION IN URBAN AND RURAL AREAS

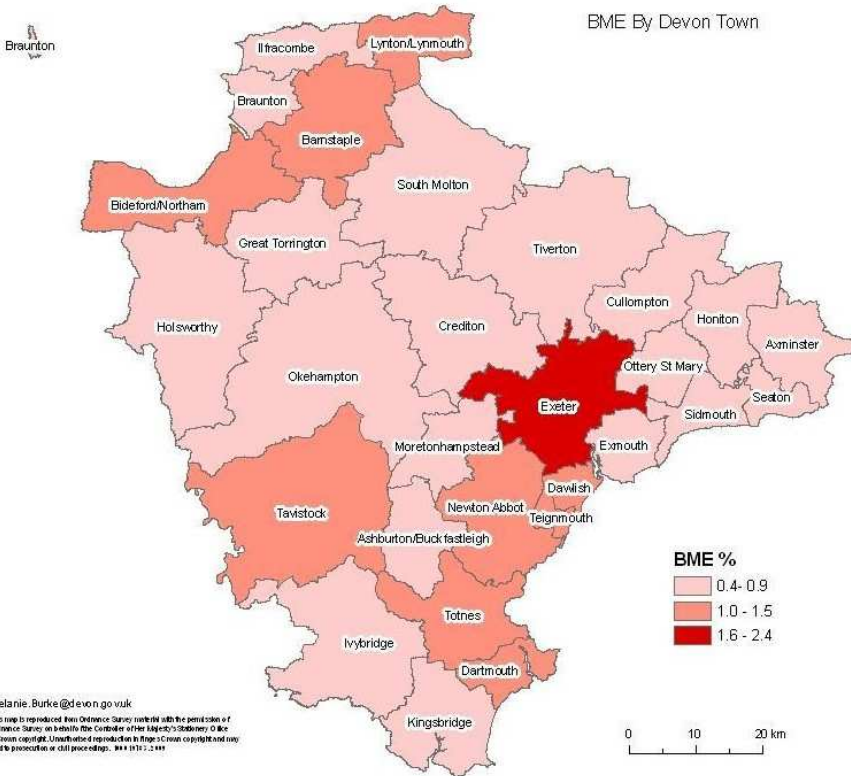
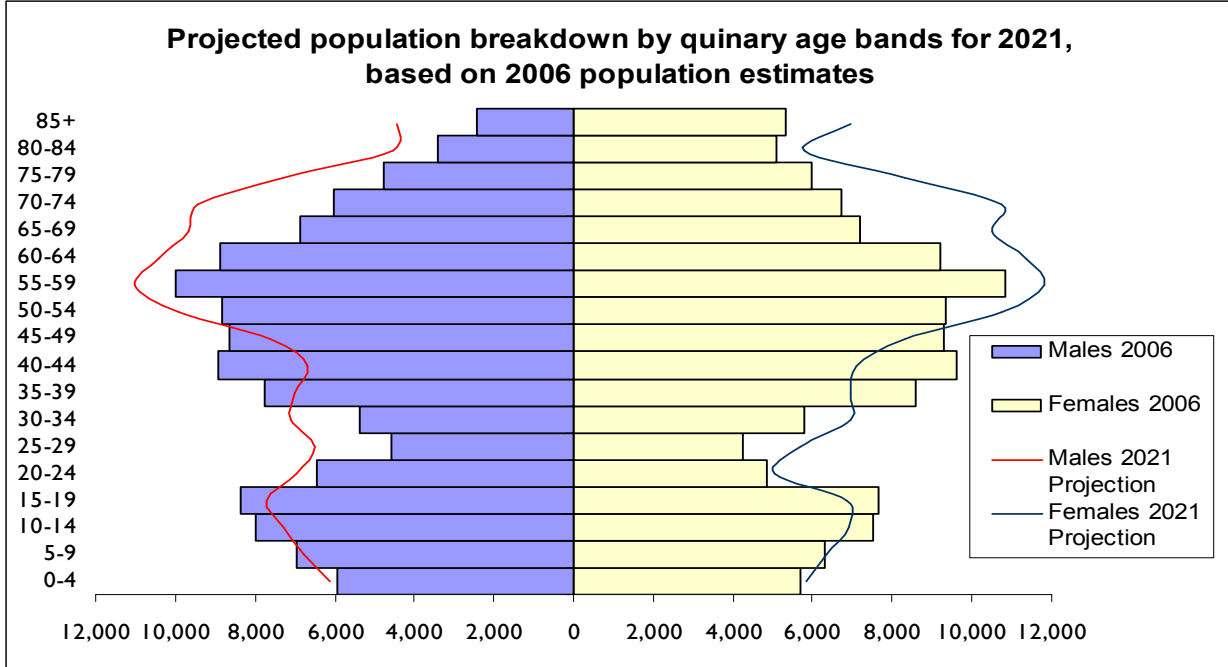
The following chart compares index of multiple deprivation scores for the urban areas of the Devon localities with the surrounding rural hinterland, along with average urban and rural Index of Multiple Deprivation scores for Devon and England as a whole.

This reveals that in general the urban areas in the Southern locality are less deprived than the Devon and national averages, and less deprived than the Eastern and Northern localities. Rural areas in the Southern locality are more deprived than the national rural average, and more deprived than the Eastern Devon rural average. Rural areas are marginally more deprived than urban areas across the locality as a whole.



# POPULATION

The population of the Southern locality is predicted to increase by 27,286 people between 2006 and 2021 – a rise of 10.9%. The total number in the younger age groups (from 0 to 19) is predicted to decrease by 2,544 to 53,819 – a fall of 4.5%. The 20 to 44 year age band is also predicted to see a reduction, in this case of 254 to 65,971 or 0.4%. The 45 to 64 age group should see an increase of 6,210 people (8.3%) to 81,152. The older age groups (65 years and older) are due to see an increase in number of 23,874. This equates to a 44.4% increase over the 15 years that these projections cover and will take the population in this group up to 77,683. The largest change is predicted to be in the 70 to 74 age group with an increase of 58.4%.

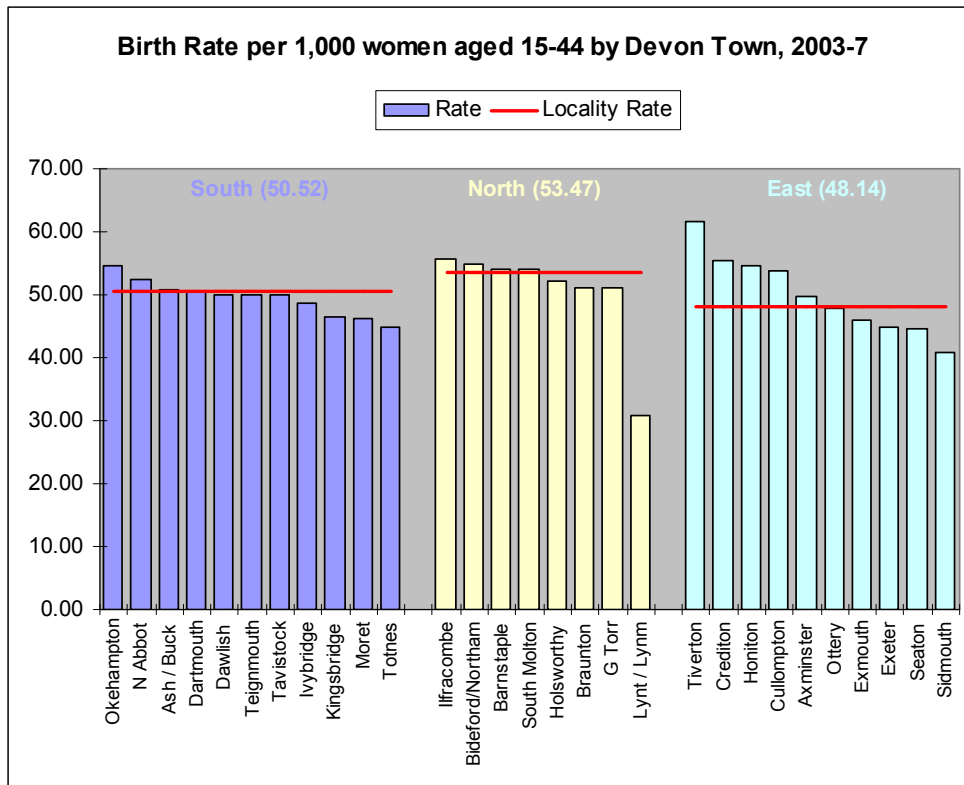


In the Southern locality the proportion of the population from BME communities based on the 2001 census ranges from 1.1% in 4 out of 11 Devon towns to 0.6% in Moretonhampstead and Okehampton, compared to the overall Devon BME of 1.1%.

Melanie Burke @devon.gov.uk  
 This map is reproduced from Ordnance Survey material with the permission of Ordnance Survey on behalf of the Controller of Her Majesty's Stationery Office. © Crown copyright. Unauthorised reproduction in any form is illegal and may incur prosecution or civil proceedings. 2011 1011 1 111

# BIRTHS

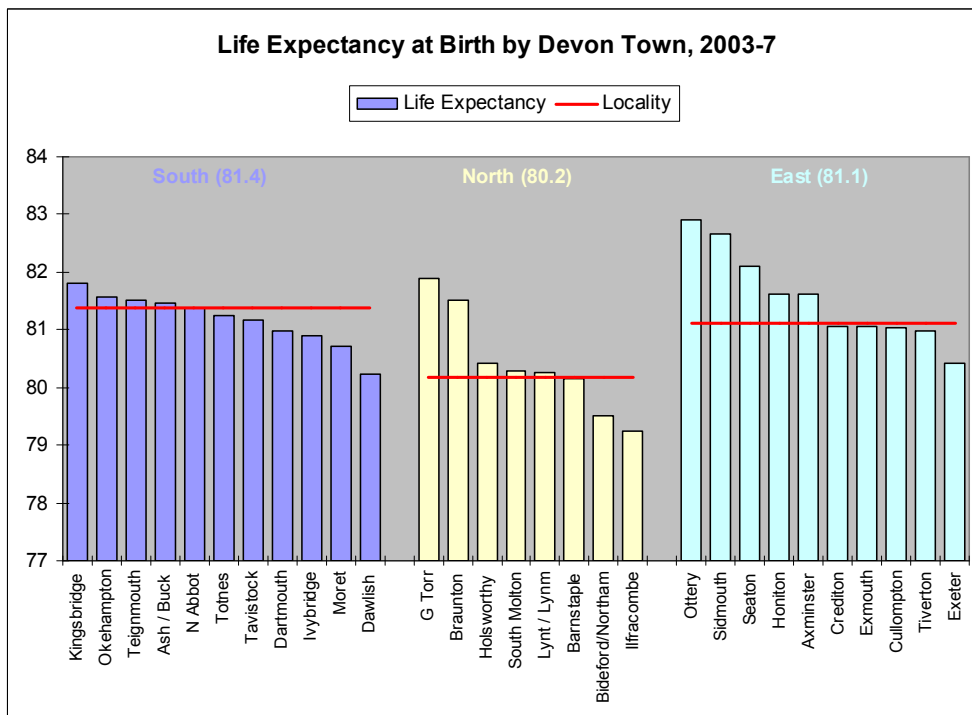
The birth rate in the Southern locality is just above the Devon average, with just under 2,300 births per year. The highest birth rates were seen in Okehampton and Newton Abbot.



Area	Average births per year	Birth Rate
Okehampton	226	54.66
N Abbot	661	52.42
Ash / Buck	85	50.90
Dartmouth	74	50.65
Dawlish	122	50.02
Teignmouth	147	49.98
Tavistock	229	49.89
Ivybridge	316	48.76
Kingsbridge	118	46.37
Moreton	30	46.08
Totnes	175	44.93
Southern Locality	2,272	50.52
Devon	6,721	50.02

# LIFE EXPECTANCY

Life expectancy in the Southern locality is above the average for Devon. Life expectancy was highest in the town of Kingsbridge, and lowest in Dawlish.

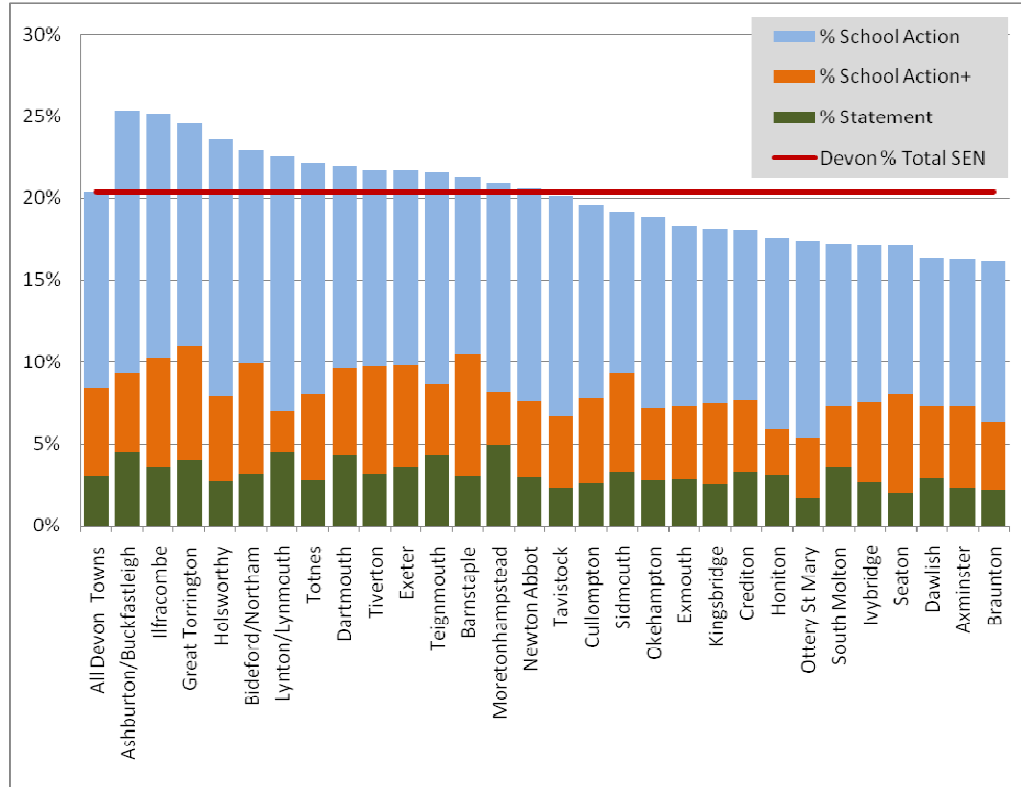


Area	Female	Male	Total
Kingsbridge	83.3	80.2	81.8
Okehampton	84.1	79.0	81.6
Teignmouth	83.2	79.5	81.5
Ash / Buck	83.9	78.9	81.5
N Abbot	82.9	79.6	81.4
Totnes	83.7	78.8	81.2
Tavistock	82.9	79.2	81.2
Dartmouth	82.4	79.5	81.0
Ivybridge	83.1	78.5	80.9
Moreton	82.4	78.9	80.7
Dawlish	81.7	78.7	80.2
Southern Locality	83.2	79.3	81.4
Devon	83.0	78.9	81.0

# CHILDREN AND YOUNG PEOPLE

The Southern Locality typically has average levels of children with Special Educational Needs, although higher levels were seen in Ashburton/Buckfastleigh, Totnes and Dartmouth. Teignmouth, Moretonhampstead and Totnes had higher rates of youth offending below average levels were seen elsewhere. GCSE performance is typically above the Devon average, although lower attainment was seen in Ashburton/Buckfastleigh (highlighted in yellow). The proportion of black and minority ethnic children was highest in Totnes.

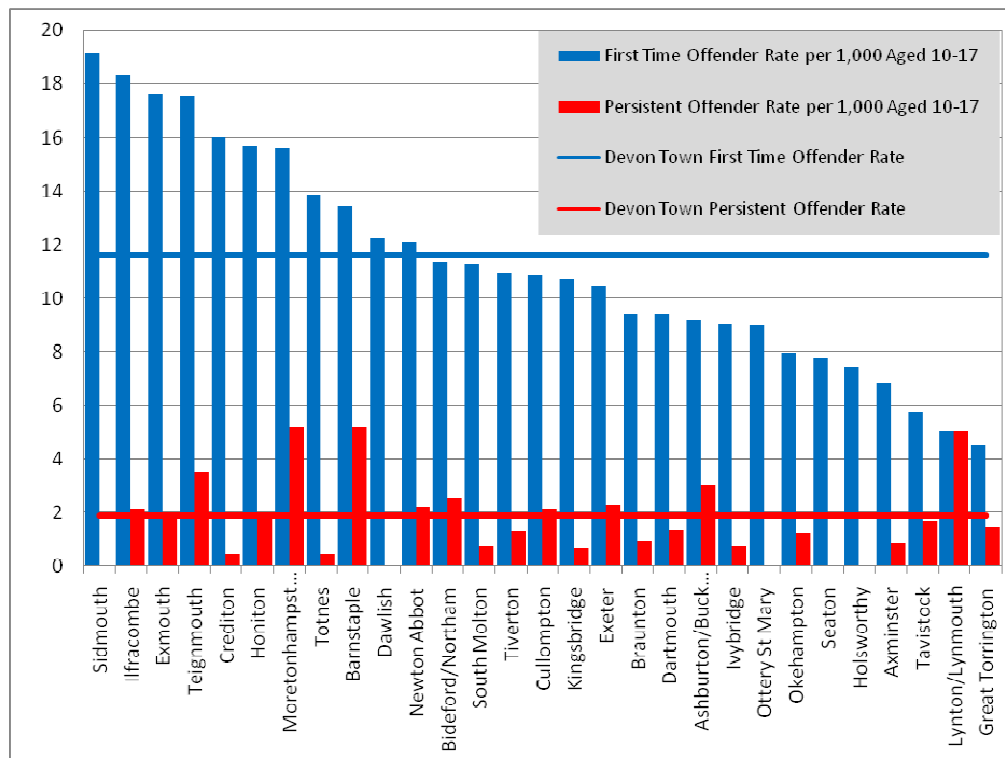
## SPECIAL EDUCATIONAL NEEDS (2007/08)



This graph represents the percentage of young people with SEN attending a DCC school in 07/08 by their town of residence. The national average for the proportion of pupils identified with SEN (i.e. Statemented, School Action Plus and School Action combined) is approximately 20%. We want children and young people to access services and provision within their Local Learning Communities wherever possible. Some children with complex needs will require access to specialist support in additionally resourced provision or special schools. Where there are significant variations it reflects the level of support needed within the community.

Data Source: DCSF School Census (Oct 07, Jan 08 and May 08)

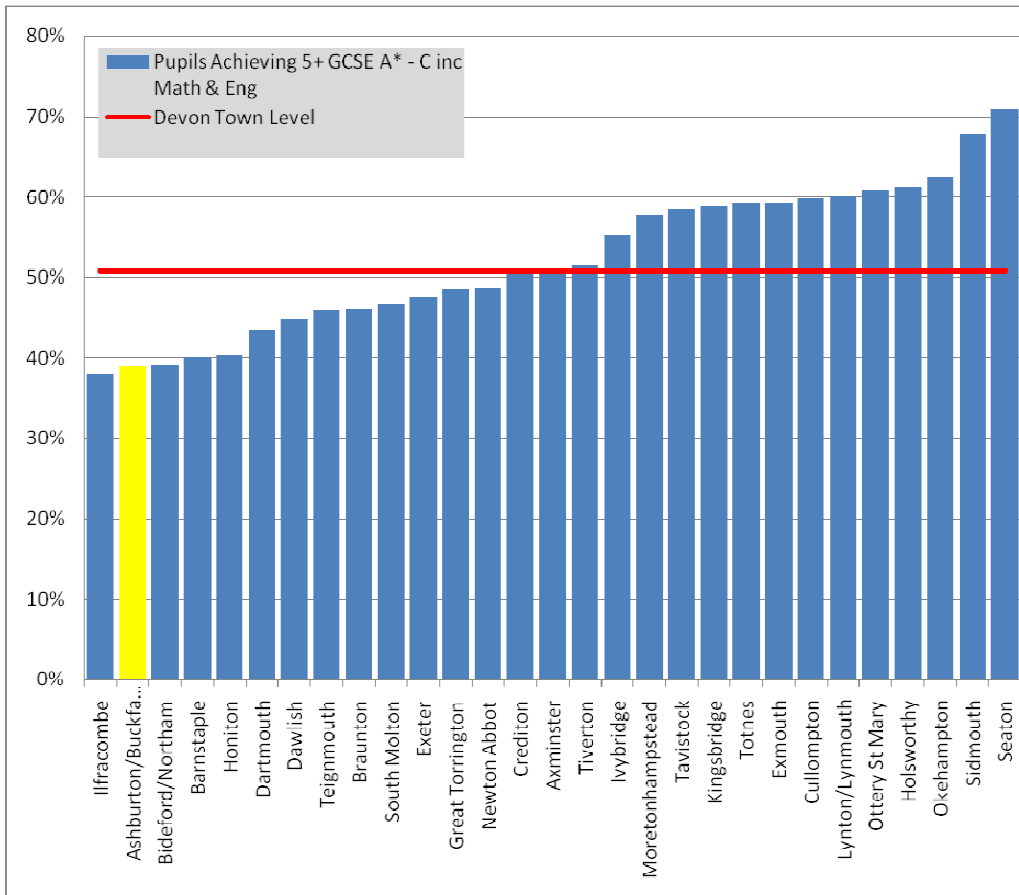
## YOUTH OFFENDING (2008)



Data Source: Devon Youth Offending Team 2009

Devon's First Time Entrants (FTEs) figure has been below the regional and national average since 2004/5, and continues to fall - current projections for the financial year 2009/10 are that the FTE rate will drop by over a third, compared to the baseline year of 2007/8. Within Devon, such small numbers of FTEs can cause significant statistical variations from one year to the next, particularly in the smaller towns and communities. In general, around two thirds of FTEs do not re-offend, but the pattern of those who re-offend more persistently (Persistent Youth Offenders - PYOs) is even more liable to fluctuation outside of the four largest communities (Barnstaple, Exeter, Exmouth and Newton Abbot). Preventative work by the Youth Offending Service and Children's Trust is increasingly focused, therefore, on the towns where there is a longer term pattern of FTEs and PYOs above the Devon average.

## GCSE PERFORMANCE (2008)



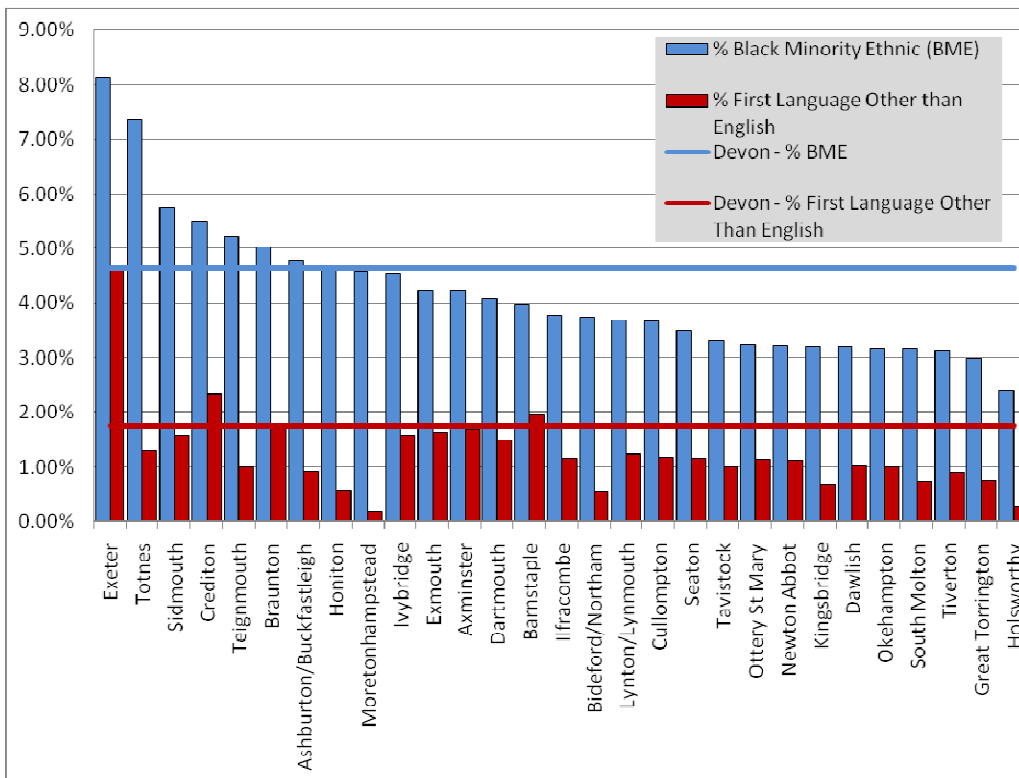
Data Source: Devon Learning and Development Partnership

The graph illustrates GCSE performance in 2008 for pupils in Devon Maintained Schools by Town of residence.

Devon pupils' achievement at GCSE level is slightly above the National average (49.5%) but there still too many pupils not gaining 5 or more GCSEs including Maths and English.

The Local Authority has established a 'Narrowing the Gap' Programme to improve the attainment of the lowest 20% of achievers, and a 'Raising the Bar' programme to stretch the most able.

## ETHNICITY AND FIRST LANGUAGE (2007/08)



Data Source: DCSF School Census (Oct 07, Jan 08 and May 08)

This graph represents the percentage of young people with a first language other than English who were attending a DCC school in 07/08 by their town of residence.

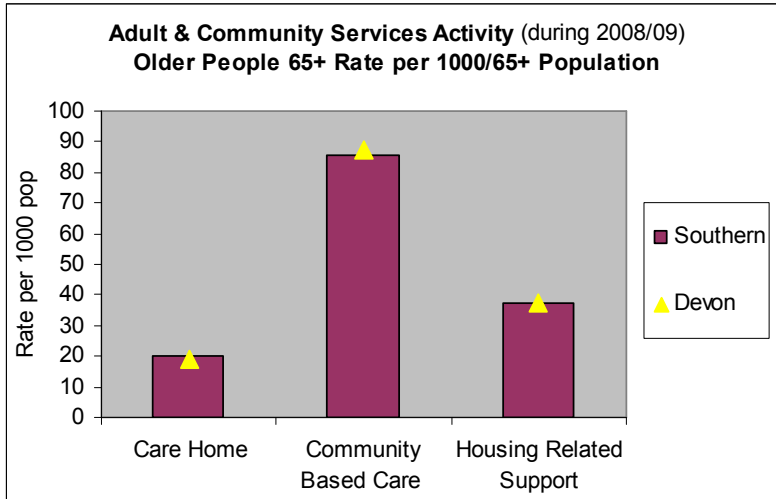
In this time period there were 4,440 pupils from a minority ethnic background in Devon schools (4.65% of the total school population) and of these 1,731 have English as an additional language.

There are over 60 different languages spoken by children and young people in Devon schools the largest minority language groups being Polish (252) and German (88).

There are few schools without minority ethnic pupils and an increase in those schools with over 6% Black Minority and Ethnic pupils on roll. Currently, the largest ethnic group are Polish families located across the county.

# ADULT AND COMMUNITY SERVICES

## Older People 65+



The table illustrates that service activity for older people aged 65+ in the Southern locality is in line with the overall Devon average for the proportion of people based in Care Homes and the proportion receiving Community Based Care and Housing Related Support. The rate of referrals for older people aged 65+ into Adult and Community Services in the Southern locality is 157.9 (per 1000 65+ population). This is comparable to the overall Devon referral rate. A slightly higher proportion of referrals (16%) for older people aged 65+ in the Southern locality are dealt with at point of contact when compared with the overall Devon average of 14%. There is an over representation in the number of referrals from Local Authority Housing Departments for clients aged 65+ in the Southern locality.

The rate of older people aged 65+ in the Southern locality receiving assessments is 63.9 (per 1000 65+ population) and 86.3 for reviews, these rates are both comparable to the Devon average.

10% of adult clients in the Southern locality who were assessed on Falls risk groups based on new enquiries received for the Home Improvement Agency were identified as in the High risk group, compared to 15% for the Devon average.

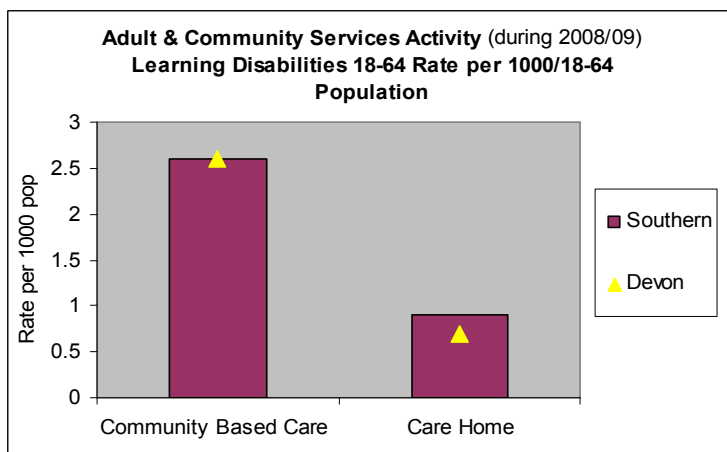
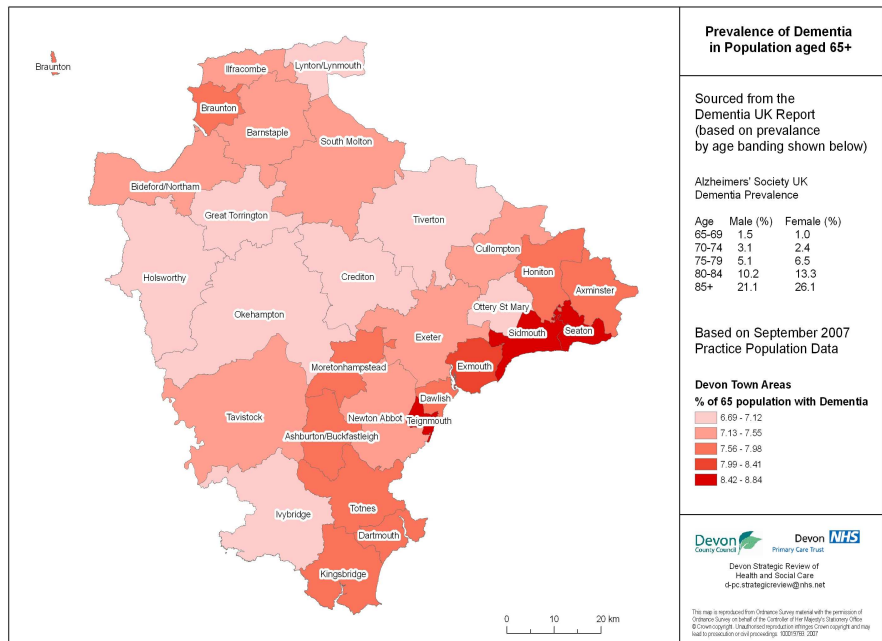
## Mental Health and Learning Disabilities

Applying the nationally accepted prevalence rates for Dementia to the population in the Southern locality shows that there are an estimated 4,146 people in the area with Dementia. This gives an overall prevalence rate in the 65 and over population of 7.54%. This ranges from 8.66% in Teignmouth to 6.69% in Okehampton.

The table below presents people in the Southern locality aged 18-64 predicted to have a mental health problem, projected to 2025

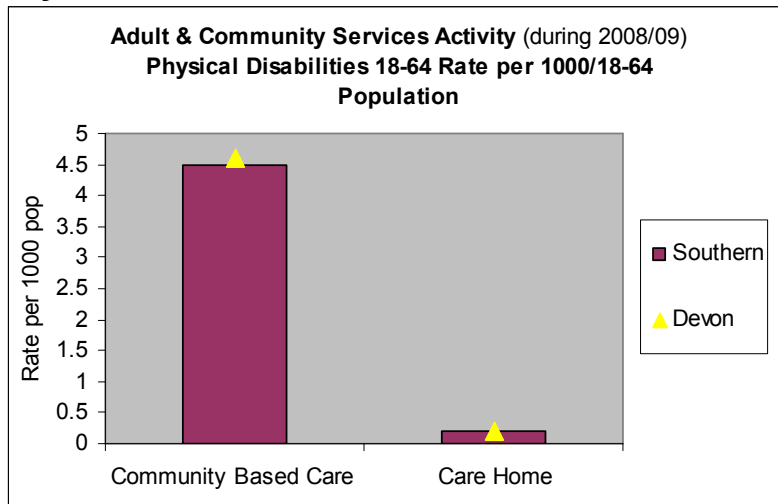
	2008	2025	% Change
Depression	3,943	4,141	5%
Neurotic disorder	25,460	26,705	5%
Personality disorder	6,783	7,158	6%
Psychotic disorder	850	894	5%

Data Source: PANSI



In the Southern locality the proportion of people with learning disabilities aged 18-64 receiving Community Based Care and the proportion of people based in Care Homes is comparable to the overall Devon average.

## Physical Disabilities 18-64



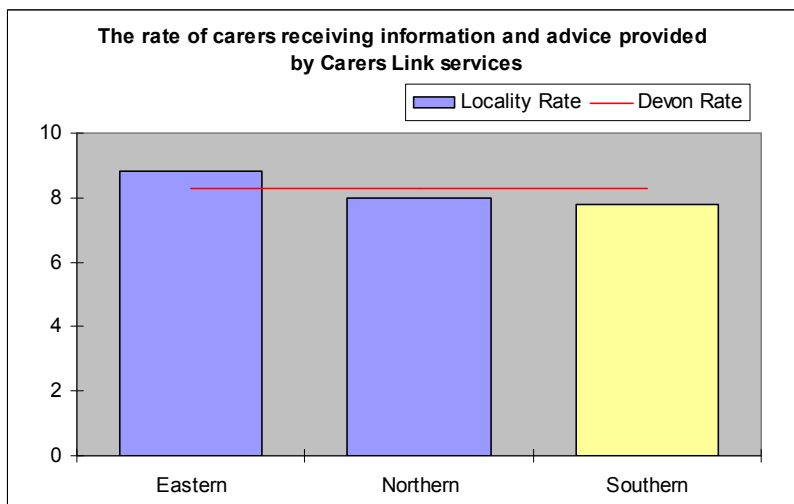
This table demonstrates that the Southern locality is in line with the overall Devon average for the number of people with physical disabilities aged 18-64 receiving Community Based Care and the number based in a Care Home.

There is an under representation in the number of referrals made by self/carer for this client group in the Southern locality.

The rate of people with physical disabilities aged 18-64 in the Southern locality receiving assessments is 3.3 (per 1000 18-64 population) and 2.5 for reviews, these rates are both comparable to the Devon average.

The rate of Safeguarding alerts in the Southern locality is 2 (per 1000 18+ population) which is in line with the Devon average of 1.6.

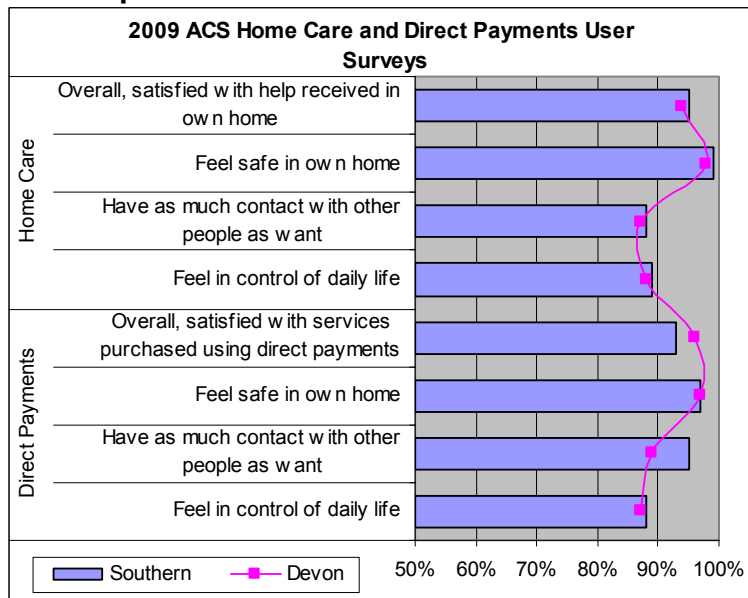
## Carers



The rate of Carers assessments and reviews in the Southern locality is 8.9 (per 1000 18+ population) and is comparable with the Devon average.

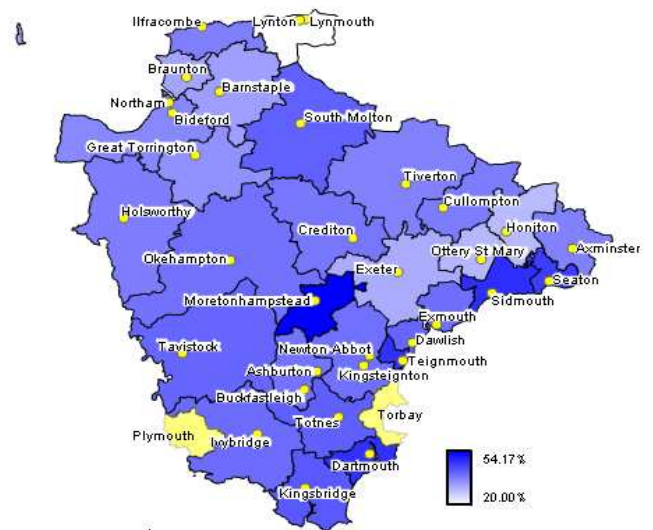
The table opposite illustrates that the rate of carers receiving Information and advice provided by Carers Link services in the Southern locality at 7.8 (per 1000 18+ population) is comparable with the Devon average of 8.3. A large proportion of this is carers of people with physical disabilities and mental health problems.

## User Experience / Feedback



Respect and consideration

Older people are able to get the support needed to continue to live at home

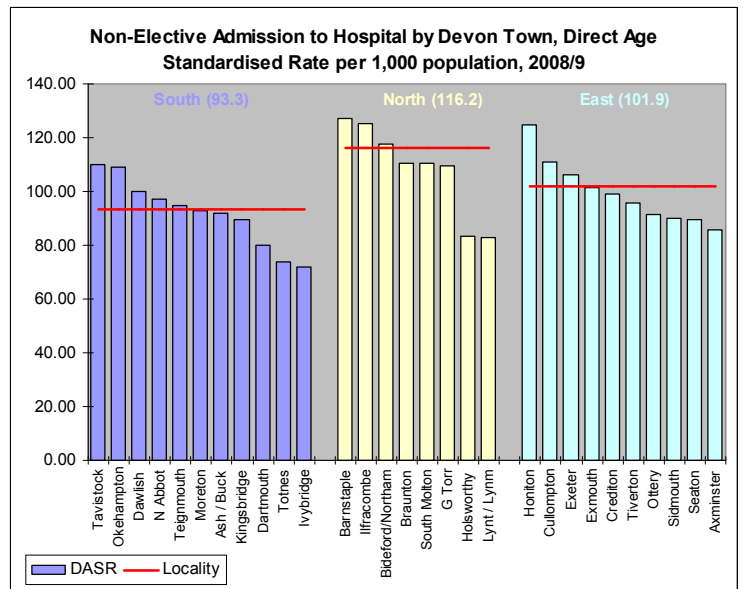
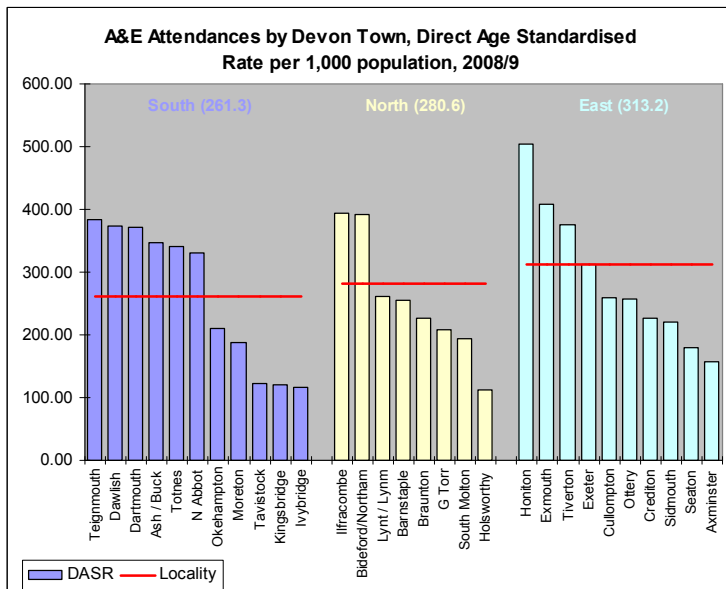
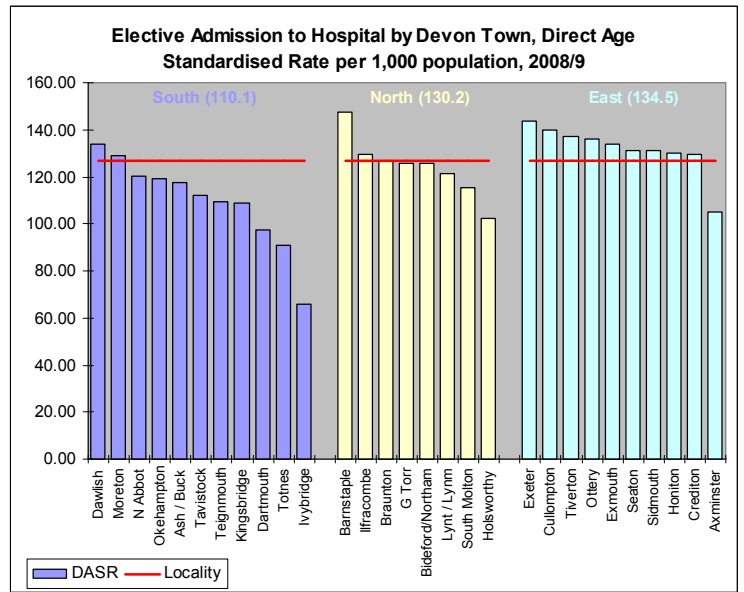
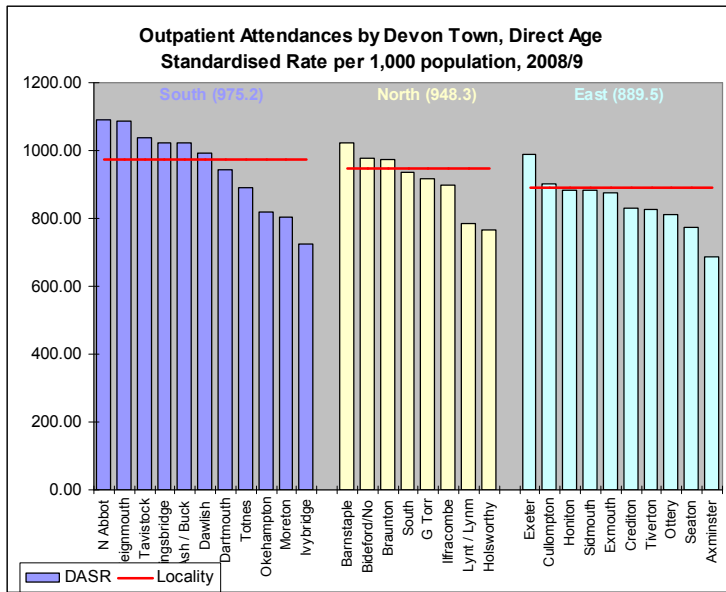


Results of the 2008 Place Survey in the Southern locality range from 54.2% of Moretonhampstead residents to 38.5% of Ashburton / Buckfastleigh residents who responded to the survey felt that older people are able to get the support needed to continue to live at home compared to the Devon average of 36%. The 2009 ACS User Survey results for Home Care and Direct Payments recipients indicate that respondents in the Southern locality feel as safe as in Devon overall. However, low response rates in some districts can skew survey results.



# HOSPITAL ACTIVITY

The rate of outpatient attendances in the Southern locality is above the Devon average, whilst elective admissions to hospital are well below the Devon average. The rate of Accident and Emergency attendances is also below the Devon average, as is the rate of non-elective (emergency, maternity and transfer) admissions to hospital.

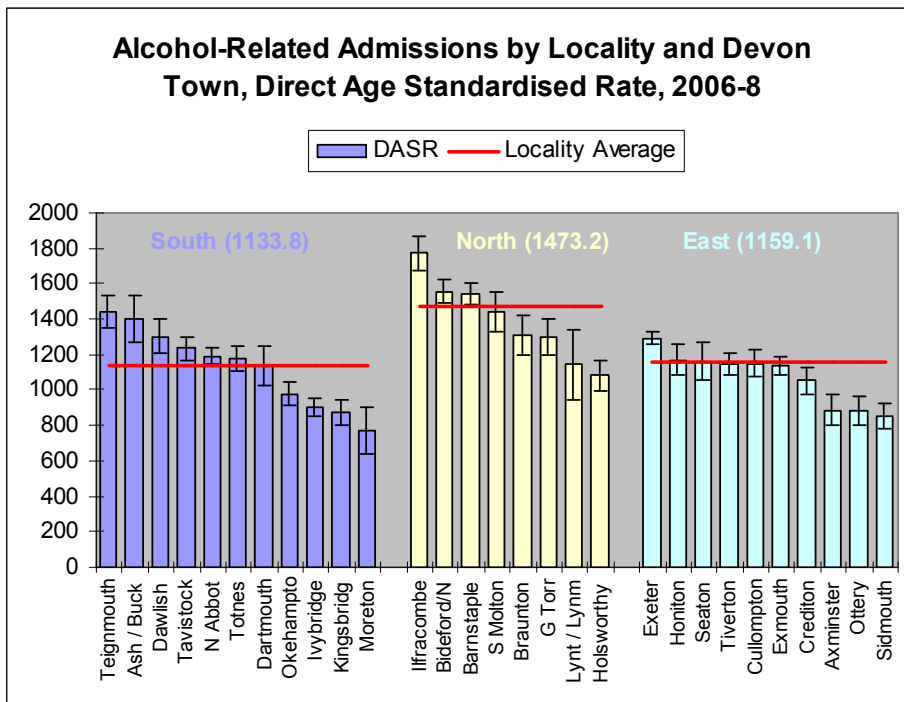


## Hospital Activity, Direct Age Standardised Rates by Activity Type, 2008/9

Area	A&E Attends	Outpatient Attends	Elective Admissions	Non-Elective Admissions
Ashburton/Buckfastleigh	254.6	823.0	100.8	62.7
Dartmouth	371.8	943.2	97.1	80.1
Dawlish	373.0	991.1	133.8	100.1
Ivybridge	116.9	723.8	66.1	71.8
Kingsbridge	119.7	1023.3	108.6	89.4
Moretonhampstead	187.9	804.9	129.1	93.0
Newton Abbot	329.6	1091.6	120.2	97.1
Okehampton	211.2	820.4	119.0	109.0
Tavistock	122.3	1037.1	112.1	110.1
Teignmouth	383.5	1086.0	109.2	94.7
Totnes	340.8	890.6	90.9	73.7
Southern Locality	261.3	975.2	110.1	93.3
Devon	300.3	951.4	126.9	104.8

# PUBLIC HEALTH – ALCOHOL-RELATED ADMISSIONS

Alcohol-Related admissions include those where acute, chronic and mental conditions are known to relate either fully or partially to alcohol use. Further details on how these figures are derived can be found in the glossary. The Southern Locality has a significantly lower rate of alcohol-related admissions than Devon as a whole. The highest rates of admissions were seen in Teignmouth, Ashburton/Buckfastleigh and Dawlish, with the lowest rate seen in Moretonhampstead. There are over 4,300 admissions per year in the area.



Area	Admissions per year	DASR* per 100k
Teignmouth	413	1438.6
Ash / Buck	175	1398.8
Dawlish	308	1301.6
Tavistock	528	1237.2
N Abbot	1,135	1192.7
Totnes	380	1177.6
Dartmouth	182	1132.4
Okehampton	353	978.3
Ivybridge	423	902.7
Kingsbridge	255	870.5
Moreton	57	773.2
Southern Locality	4,348	1133.8
Devon	12,742	1215.3

\* Direct age standardised rate, see glossary

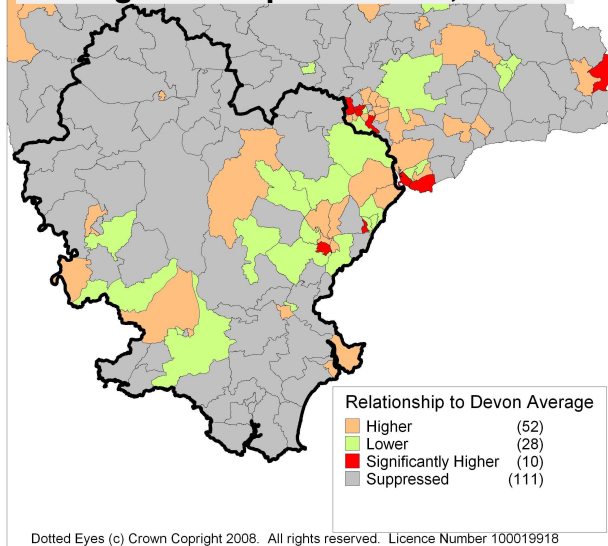
## PUBLIC HEALTH TEEN CONCEPTIONS

Levels of under 18 conceptions were significantly above average in parts of Newton Abbot and Teignmouth, with higher rates also seen around Dawlish, Totnes and Ivybridge. Due to small numbers rates elsewhere were suppressed.

## PUBLIC HEALTH DEATH RATES 2003-7

The table below presents mortality or death rates for the Southern locality compared with Devon. This highlights that death rates are consistently well below the Devon average, although the differences were not statistically significant.

**Teenage Conception Rates, 2004-6**



Measure	Average deaths per year	DASR	Devon DASR	Relationship to Average
All Causes	2,893	518.5	533.3	N.S.
All Causes, Female	1,533	437	448.3	N.S.
All Causes, Male	1,360	621.9	640.6	N.S.
All Causes, under 75	811	244.5	254.4	N.S.
Cancer	792	160	163.9	N.S.
Cancer, under 75	357	103.2	105.5	N.S.
Circulatory	1,088	177.6	183.8	N.S.
Circulatory, under 75	220	62.22	65.8	N.S.

N.S. = Not statistically significant. For more information on definitions and measures, see glossary