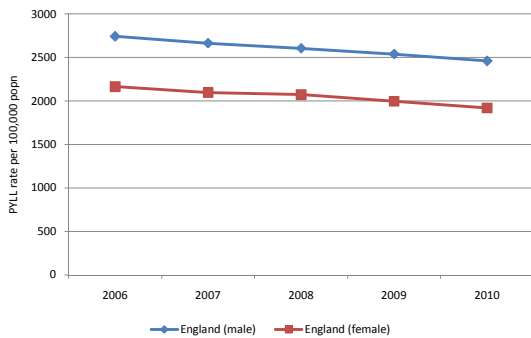


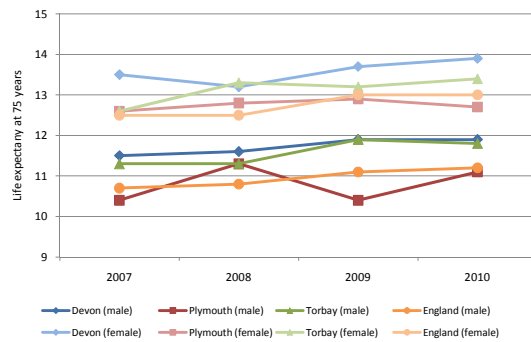
Domain 1: Preventing people from dying prematurely

Overarching Indicators

Potential years of life lost (PYLL) from causes considered amenable to healthcare

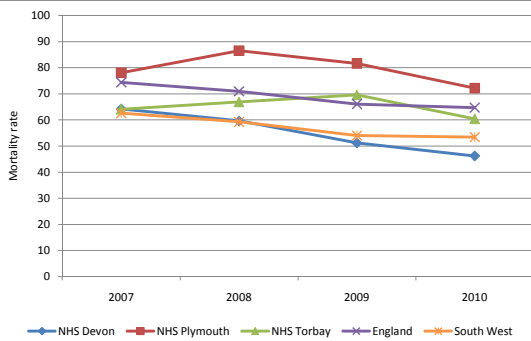


Life expectancy at 75

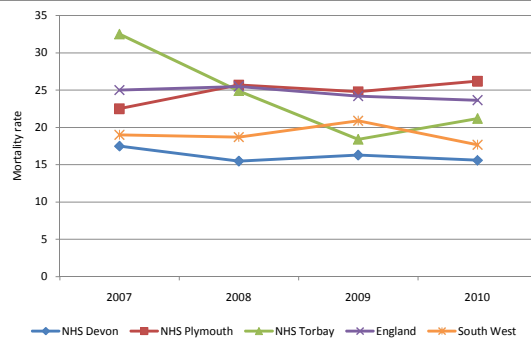


Improvement Areas

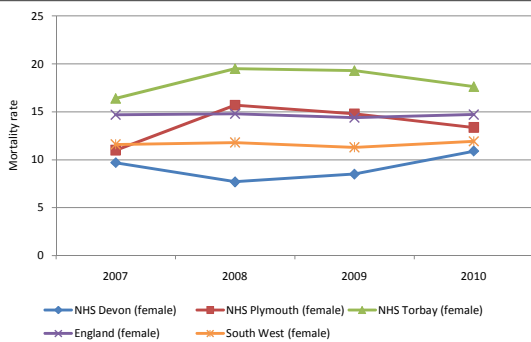
Under 75 mortality from cardiovascular disease



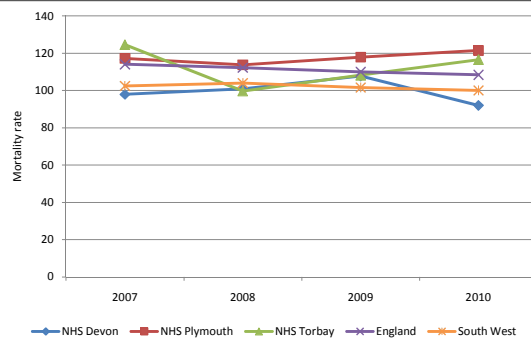
Under 75 mortality from respiratory disease



Under 75 mortality from liver disease



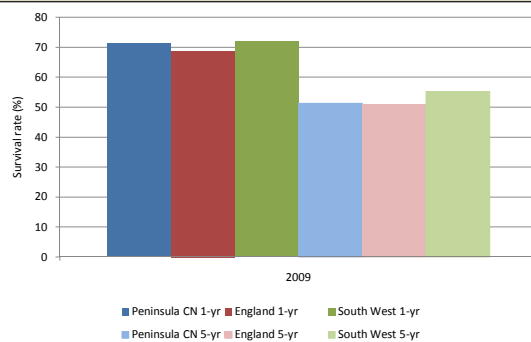
Under 75 mortality from cancer

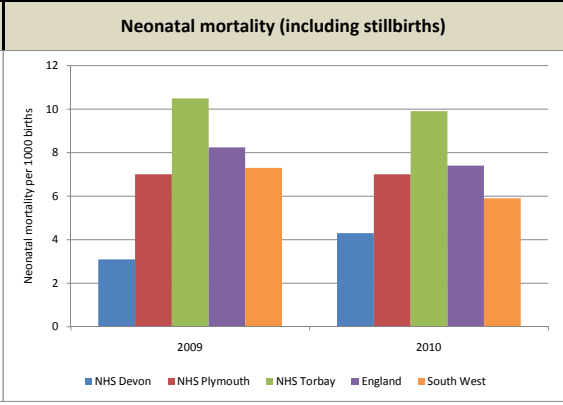
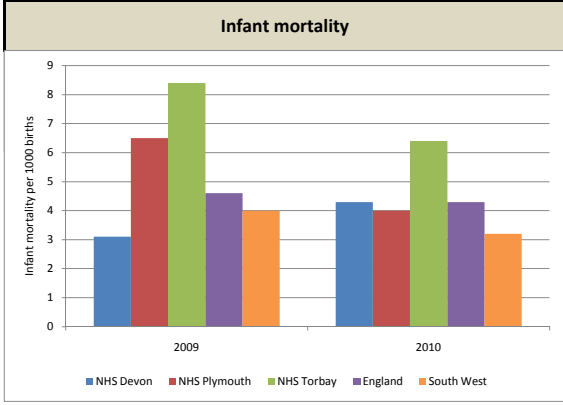
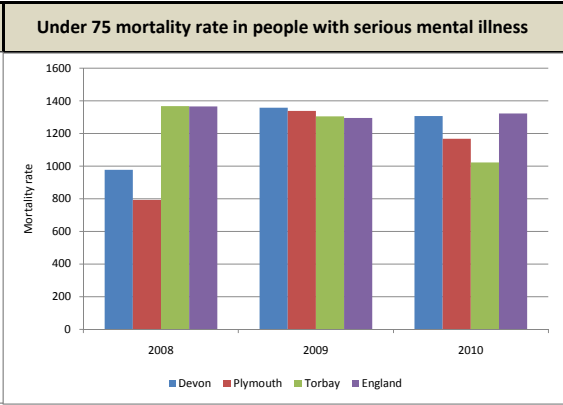
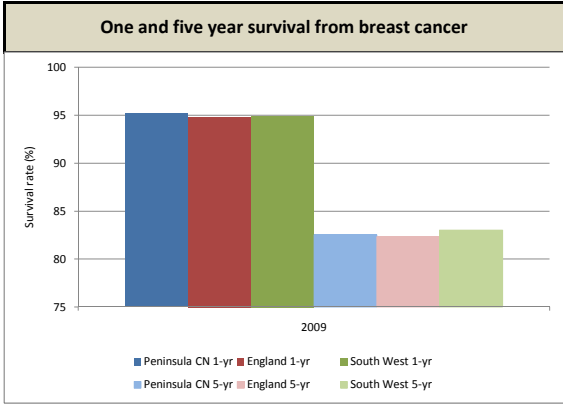
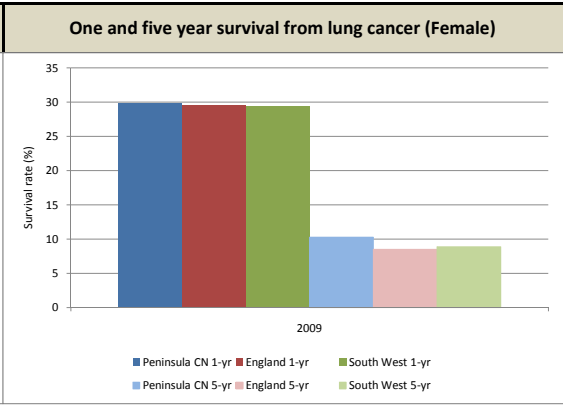
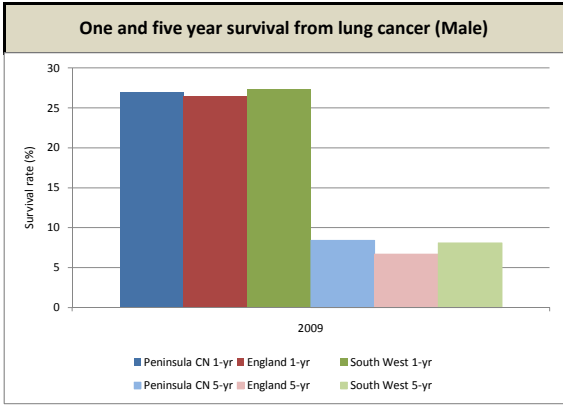


One and five year survival from colorectal cancer (Male)



One and five year survival from colorectal cancer (Female)





Domain 2: Enhancing quality of life for people with long-term conditions

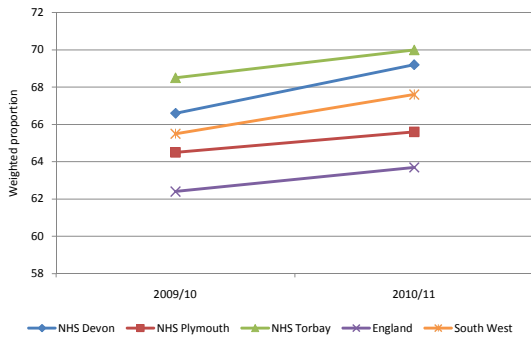
Overarching Indicators

Health-related quality of life for people with long-term conditions (EQ-5D)

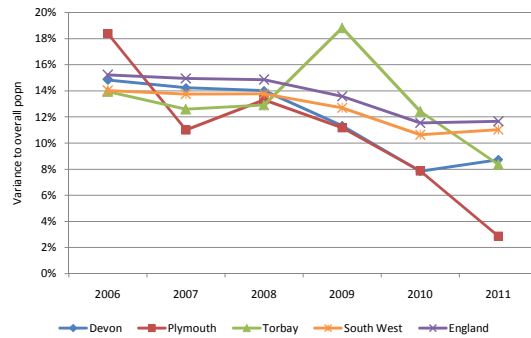
Indicator under development

Improvement Areas

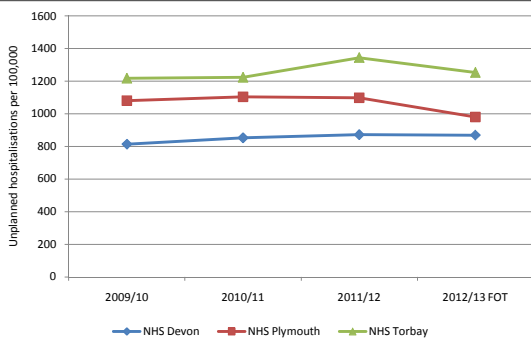
Proportion of people feeling supported to manage their condition



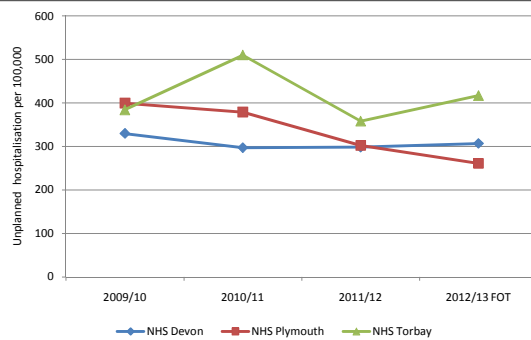
Employment of people with long-term conditions



Unplanned hospitalisation for chronic ambulatory care sensitive (ACS) conditions (adults)



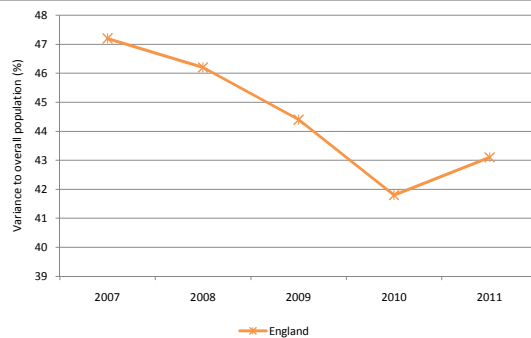
Unplanned hospitalisation for asthma, diabetes and epilepsy in under 19s



Health-related quality of life for carers (EQ-5D)

Indicator under development

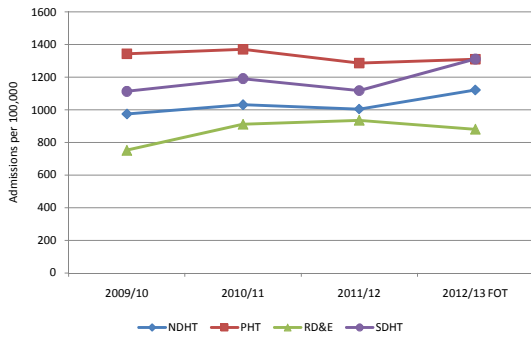
Employment of people with mental illness



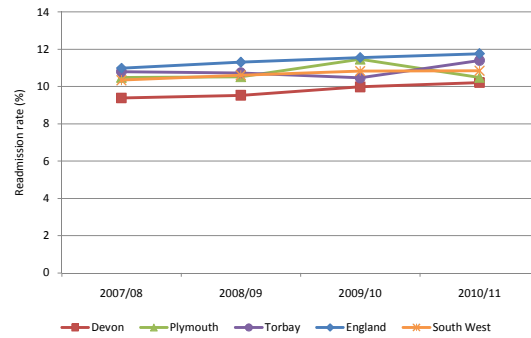
Domain 3: Helping people to recover from episodes of ill health or following injury

Overarching Indicators

Emergency admissions for acute conditions that should not usually require hospital admission

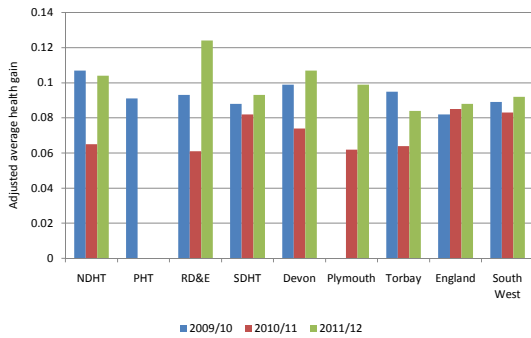


Emergency readmission within 30 days of discharge from hospital

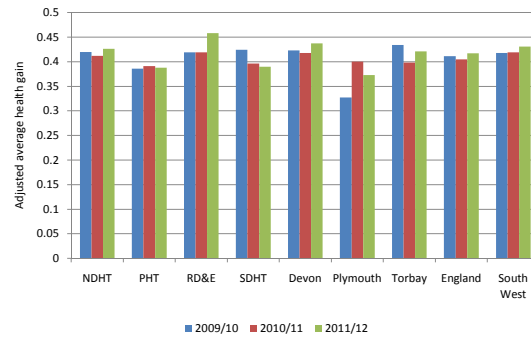


Improvement Areas

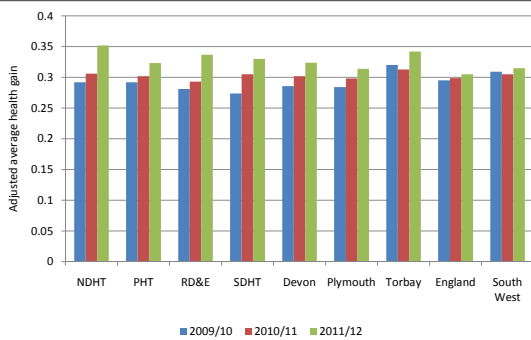
Patient-recorded outcome measures (PROMs) for elective procedures - Groin hernia



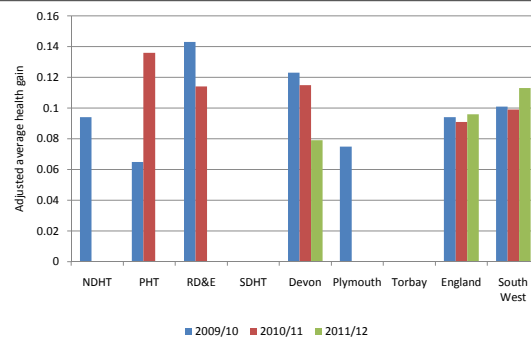
Patient-recorded outcome measures (PROMs) for elective procedures - Hip replacement



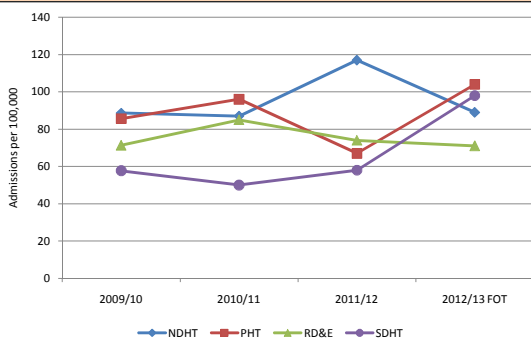
Patient-recorded outcome measures (PROMs) for elective procedures - Knee replacement



Patient-recorded outcome measures (PROMs) for elective procedures - Varicose vein



Emergency admissions for children with lower respiratory tract infections



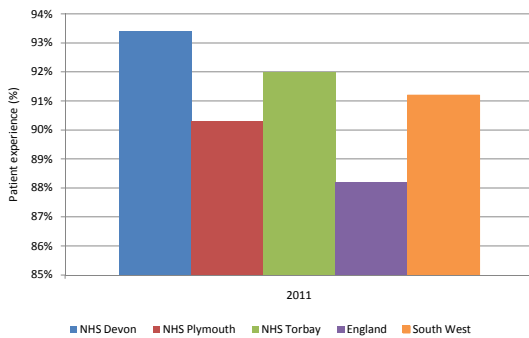
An indicator on recovery from injury/trauma

Indicator under development

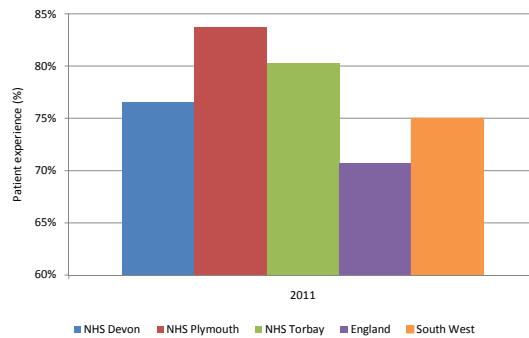
Domain 4: Ensuring that people have a positive experience of care

Overarching Indicators

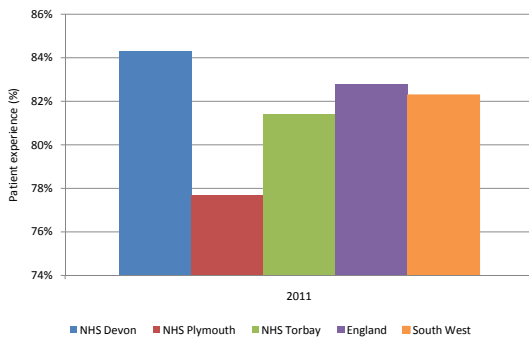
Patient experience of primary care - GP - Jul-Sep 2011



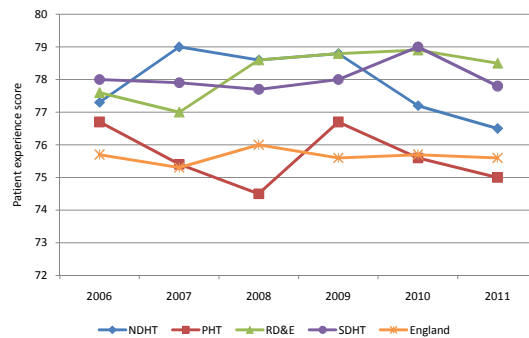
Patient experience of primary care - Out-of hours - Jul-Sep 2011



Patient experience of primary care - Dental - Jul-Sep 2011

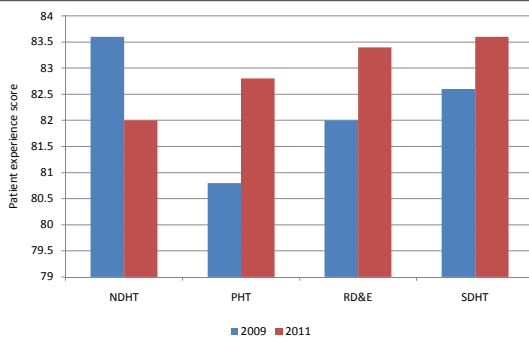


Patient experience of hospital care

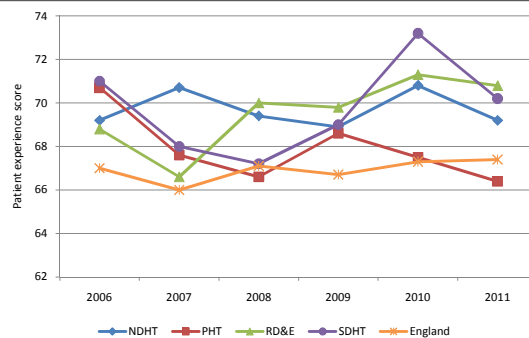


Improvement Areas

Patient experience of outpatient services



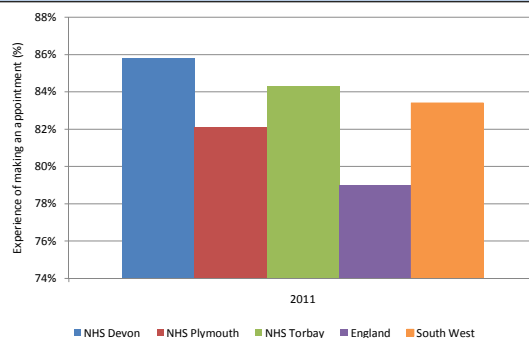
Responsiveness to inpatients' personal needs

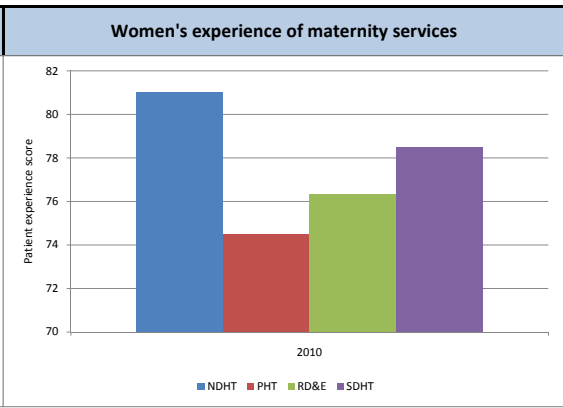
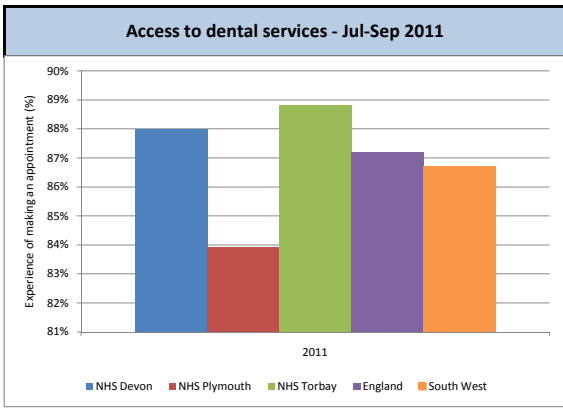


Patient experience of A&E services



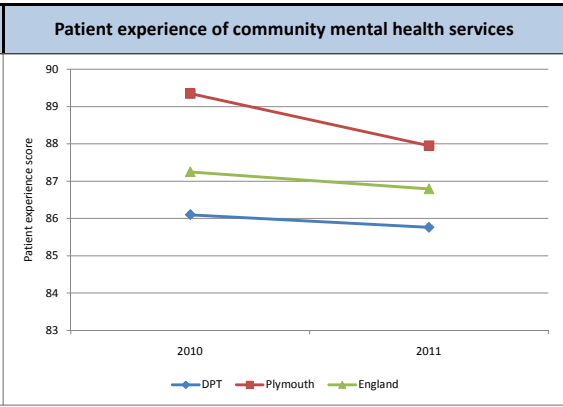
Access to GP services - Jul-Sep 2011





An indicator based on the survey of bereaved carers

Indicator under development



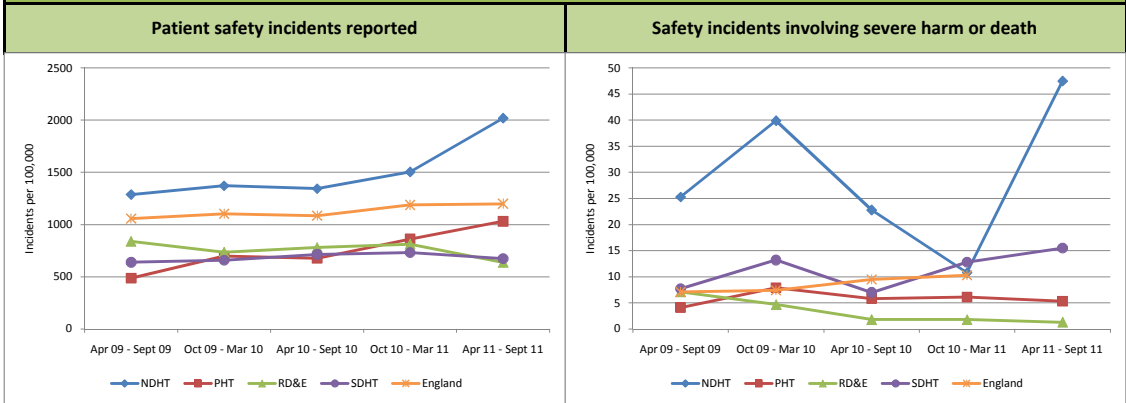
An indicator on children and young people's experience of care

Indicator under development

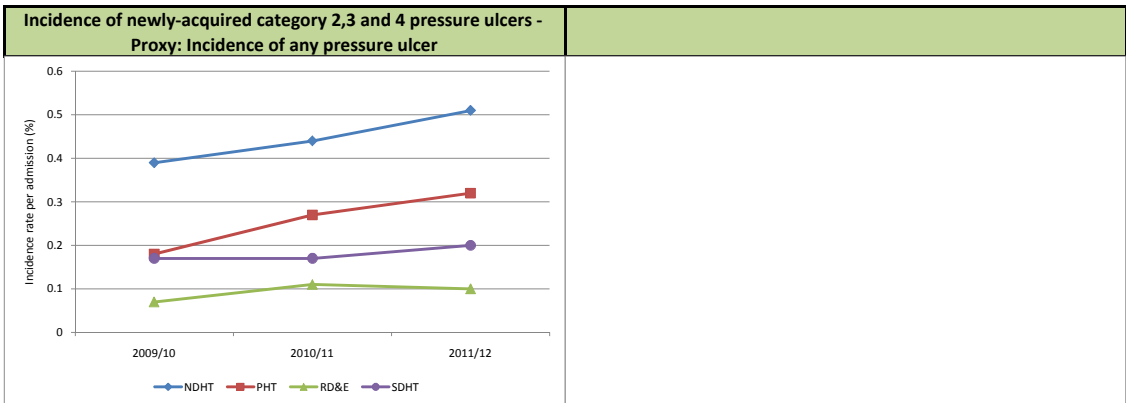
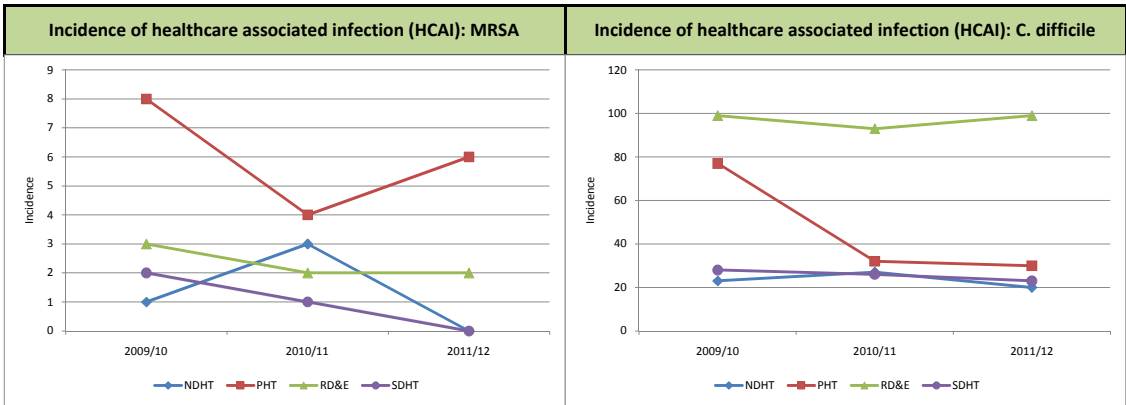
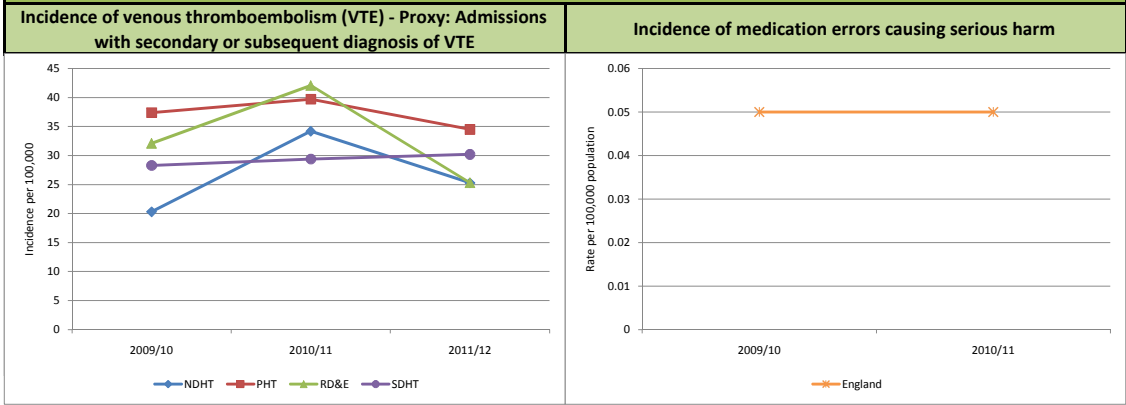
This section is currently blank.

Domain 5: Treating and caring for people in a safe environment and protecting them from avoidable harm

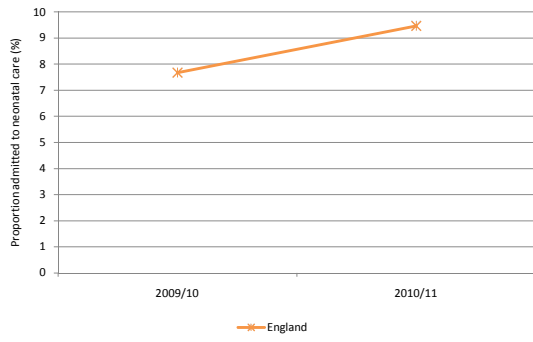
Overarching Indicators



Improvement Areas



Admission of full-term babies to neonatal care



Incidence of harm to children due to 'failure to monitor'

